



TECHNIMOUNT
EMS™



BRACKET PRO SERIE® 35 - LP

MOUNTING SYSTEM FOR THE STRYKER LIFEPAK® 15
MONITOR/DEFIBRILLATOR

SAFETY AND FLEXIBILITY WHERE IT MATTERS MOST

The Bracket Pro Serie 35 - LP is designed for intensive use in tough EMS environments. It secures the LIFEPAK 15 on emergency vehicle surfaces, stretchers, and floors.

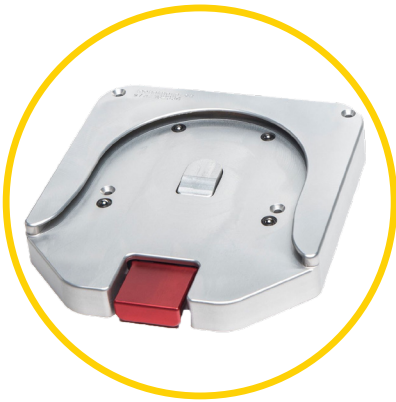
The Bracket Pro Serie 35 - LP is tested in compliance with SAE J3043, the highest industry safety standards for EMS and CCT transport.

At Technimount EMS, we understand that EMS and Critical Care Transport teams need solutions that they can rely on. We design and develop quality mounting systems which are safe and flexible, allowing you to concentrate on what matters most - patient care.

BRACKET PRO SERIE® 35 - LP

POTENTIAL CONFIGURATIONS

Standard Surface Base



Safety Arm System



TECHNICAL SPECIFICATIONS

Product Name	Bracket Pro Serie® 35 - LP
Description	The Bracket Pro Serie® 35 - LP is designed to secure the Stryker LIFEPAK® 15 monitor/defibrillator during critical care transport
Part Number	<ul style="list-style-type: none">- 210-12-PC15-LP – Bracket Pro Serie® 35 - LP- 100-20-UN – Standard Surface Base
Features	<ul style="list-style-type: none">- Multiple mounting configurations on surfaces, stretchers, and cots- Robust bracket for EMS/CCT- Compatible with or without bags
Operating Environment	EMS/CCT (Ground)
Compliance	Tested in compliance with: <ul style="list-style-type: none">- SAE J3043
Compatible Mounting System	Compatible with: <ul style="list-style-type: none">- Standard Surface Base- Safety Arm System- Other compatible systems available
Dimensions (W x D x H)	15.3 in. x 10.5 in. x 12.8 in. (38.1 cm x 25.4 cm x 30.4 cm)
Weight	5.1 lb (2.27 kg)
Composition	<ul style="list-style-type: none">- Bracket Pro Serie® 35 - LP: Aluminum 6061-T6, black anodized finish- Standard bottom disc: Aluminum 6061-T6, 304 stainless steel inserts- Retaining frame: Stainless steel- Feet: Acetal- Bumpers: SBR rubber
Operating Temperature	- 31° F to 113° F (- 35° C to 45° C)
Installation	Monitor/defibrillator retained in mounting system by retaining frame
Model & Configuration Options	<ul style="list-style-type: none">- For air transport: Bracket Pro Serie® 35 - LP (210-14-PC15-LP-FL)- Contact Customer Service at customerservice@technimount.com.

* Product and medical equipment manufacturer names are Trademarks™ or Registered Trademarks® or their respective holders. Technimount does not have a commercial relationship with there manufacturers.

YOUR SAFETY IS OUR PRIORITY



FEATURES

- ✓ Secures the LIFEPAK 15 with its side, rear and top pouches.
- ✓ Retaining frame that allows for easy medical device installation while keeping a low profile design.
- ✓ Tailored design adapts to the medical device's outline.
- ✓ Front handle on the bottom of the bracket and sturdy integrated feet.
- ✓ Environment of usage: EMS/CCT (ground), military.
- ✓ Designed to comply with SAE J3043.

BENEFITS

- + Securely transport the LIFEPAK 15 during EMS/Critical Care Transport on stretchers, surfaces and floors.
- + Simple device installation and removal with the bracket from the Standard Surface Base.
- + No interference with the medical device printer, cables, and connections.
- + Increased ergonomics and maneuverability due to its front handle.
- + Reduces the risk of injury to patients and crews during patient transport.
- + Innovative design distributes impact loads evenly on the bracket.

SAFETY AND FLEXIBILITY WHERE IT MATTERS MOST



www.penncare.net
sales@penncare.net
1-800-392-7233