



TECHNIMOUNT
EMS™



BRACKET PRO SERIE® 120-GR

MOUNTING SYSTEM FOR GROUND TRANSPORT
OF THE BAXTER SIGMA SPECTRUM INFUSION PUMPS

SAFETY & FLEXIBILITY WHERE IT MATTERS MOST

The Bracket Pro Serie® 120-GR is for ground EMS and Critical Care Transport of 3 Baxter Sigma Spectrum Infusion pumps on stretchers/cots and walls.

The Bracket Pro Serie 120-GR is designed to comply with the highest industry safety standards for transport of medical equipment, SAE J3043.



Ambulance



Stretcher



Military



Air

At Technimount EMS, we understand that EMS and Critical Care Transport teams need solutions that they can rely on. We design and develop quality mounting systems which are safe and flexible, allowing them to concentrate on what matters most - patient care.

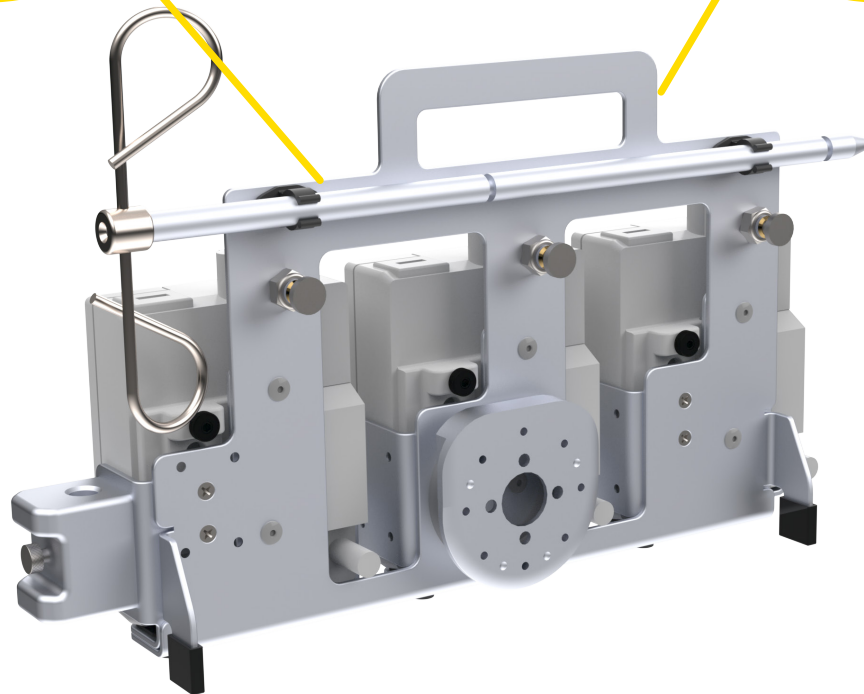
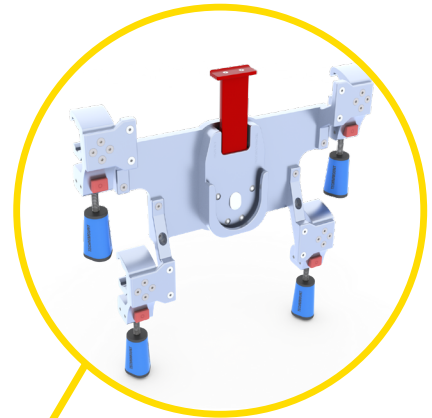
BRACKET PRO SERIE® 120-GR

POTENTIAL CONFIGURATIONS

Safety MD Transporter



Wall Mount System (EU)



TECHNICAL SPECIFICATIONS

Product Name	Bracket Pro Serie® 120-GR
Product Description	Bracket mounting system to secure the Sigma Spectrum Infusion Pumps 120-GR on cots/stretchers and walls in emergency vehicles
Compatibility of Medical Device*	Baxter Sigma Spectrum Infusion Pumps
Environment of Usage	EMS/CCT (Ground) – Hospital/Clinic, Military
Product Section Material	<ul style="list-style-type: none">• Main Assembly: Aluminum 6061-T6• Anti-Rotation Micro Disc: Aluminum 6061-T6
Product Finish	<ul style="list-style-type: none">• Main Assembly: Silver-Anodized Finish• Anti-Rotation Micro Disc: Silver-Anodized Finish
Environmental Regulations	Complying with RoHS 3
Temperature of Usage	- 35° C to 45° C
Certification	Designed to Comply with SAE J3043 (26 G)
Installation	Device retained on main assembly with Quick Release Mechanism
Attachment Options	Anti-Rotation Micro Disc
Transportation Compatibility System	Compatible with Technimount's: <ul style="list-style-type: none">• Safety MD Transporter• Wall Mount Systems
Features	<ul style="list-style-type: none">• Robust Mounting Solution for EMS/CCT/ALS Transport• Access to all Connectors and Accessories• Ground Compatibility (Flight Compatible Models Available)• Multiple Configuration Options for Transport• Quick Release Mechanism to Easily Insert and Remove the Pumps
Physical Overall Dimensions	Width 16.55 in, Depth 3.68 in, Height 9.86 in.
Weight	3.76 lb
Part Numbers	<ul style="list-style-type: none">• 1500-10-BXSGM-GR3 - Bracket Pro Serie 120-GR• 120-20-UN - Micro Base
Other Models and Configurations Options	Contact Technimount EMS for more information or for other options at customerservice@technimount.com

* Product and medical equipment manufacturers names are trademarks™ or registered trademarks® of their respective holders. Technimount does not have a commercial relationship with these medical equipment manufacturers.

YOUR SAFETY IS OUR PRIORITY

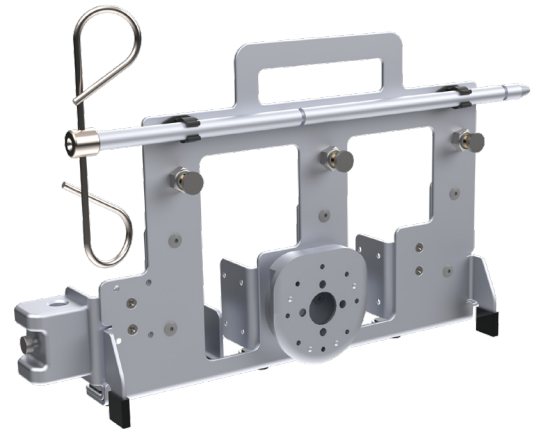


FEATURES

- ✓ Designed to secure 3 Baxter Sigma Spectrum Pumps during Ground EMS/Critical Care Transport
- ✓ Medical device retained on main assembly with proprietary locking mechanism for each pump
- ✓ Quick Release Mechanism to instantly remove the pump from the bracket
- ✓ Anti-Rotation Micro Disc to support multiple mounting configurations on stretcher/cots and wall systems
- ✓ IV Pole with Quick Release Mechanism for use during temporary transfer from bed to stretcher
- ✓ High-density aluminum with silver-anodized finish
- ✓ Designed to comply with SAE J3043

BENEFITS

- + Increases flexibility in EMS/CCT practices with multiple configuration options available (stretcher/cot and wall systems)
- + Easily install and remove the medical device from the bracket for maintenance
- + No interference with the medical device components, cables and tubing
- + Access to medical device from all angles (360° rotation on the Safety MD Transporter with Vertical Micro Base)
- + Quickly install the IV Pole during temporary transfer from bed to stretcher and store directly on the bracket when not in use
- + Certified mounting system that complies with the highest industry standards and regulations
- + Reduces risks of damage to the equipment and ensures the safety of patients and crew during EMS and Critical Care transport



**SAFETY AND FLEXIBILITY
WHERE IT MATTERS MOST**

penncare
Many Needs ... One Solution

www.penncare.net
sales@penncare.net
1-800-392-7233