

DIMENSIONS FOR OVERALL HEIGHT AND LENGTH ARE APPROXIMATE
 OVERALL HEIGHT = 106.5"
 OVERALL WIDTH WITH RUB
 RAILS & FENDERETTES = 98"

(7) WHELEN M9 SUPER LED WARNING LIGHTS
 RED/WHITE/RED/WHITE/RED/WHITE/RED
 WITH CLEAR LENSES

(5) TECNIQ S330 AMBER
 MINI-LED MARKER LIGHTS

OEM POWER
 ADJUSTABLE
 MIRRORS

FLASHING HEADLIGHTS W/
 DAYTIME RUNNING LIGHTS

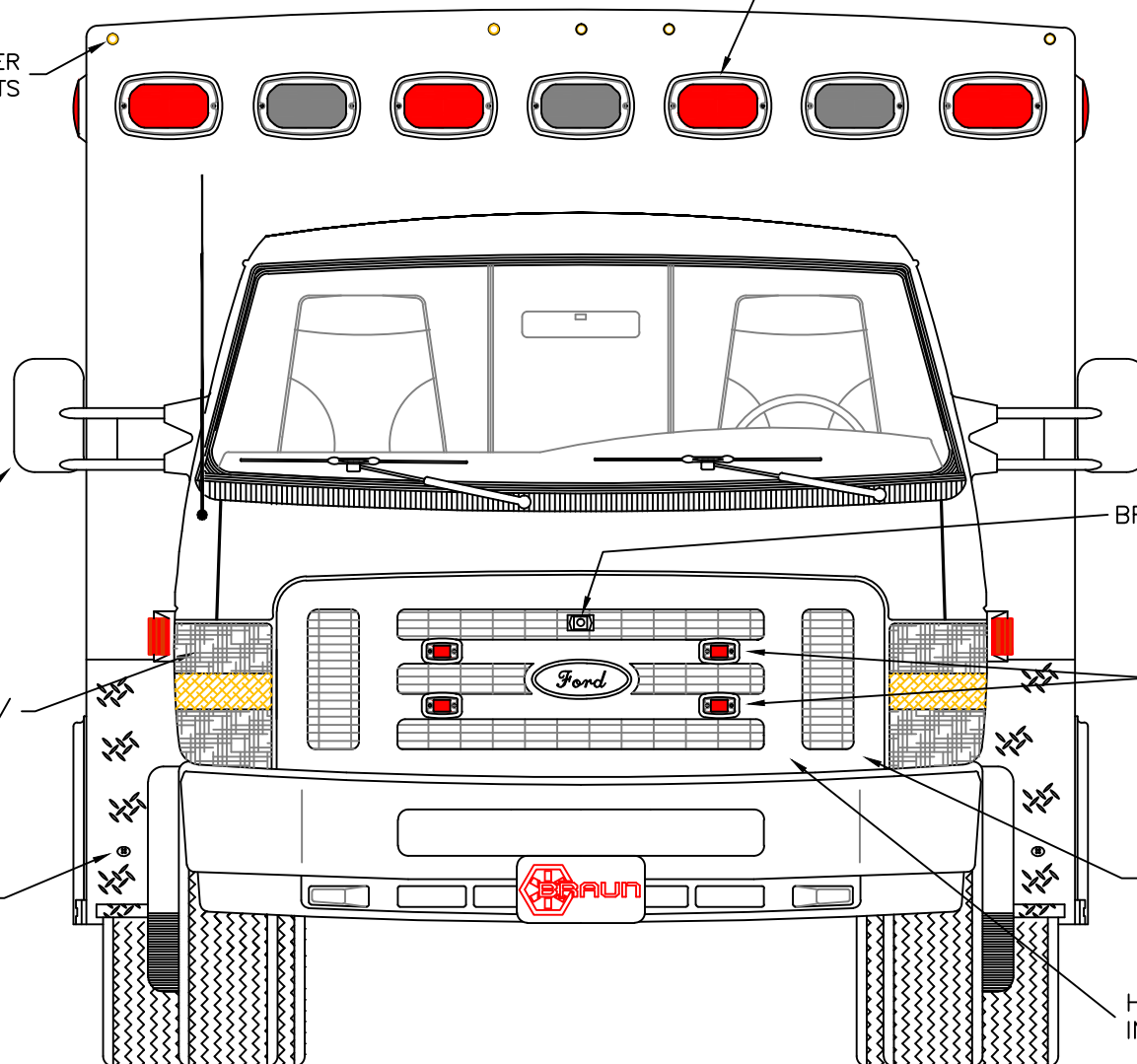
MINI-LED RUNNING
 BOARD LIGHTS

BRIGADE 360 CAMERA

(4) WHELEN M2 RED
 LED GRILLE LIGHTS WITH
 CLEAR LENSES

(2) WHELEN SA315 SERIES
 SIREN SPEAKERS BEHIND
 GRILLE AREA

HIDDEN UNLOCK SWITCH
 IN GRILLE AREA



THIS DRAWING IS FOR REPRESENTATIONAL PURPOSES ONLY. DETAILS ARE CONCEPTUAL AND ARE SUBJECT TO CHANGE DURING DESIGN AND CONSTRUCTION
 DIMENSIONS ARE APPROXIMATE UNLESS NOTED OTHERWISE TO MEET A SPECIFIC CUSTOMER NEED.

PENN CARE DEMO



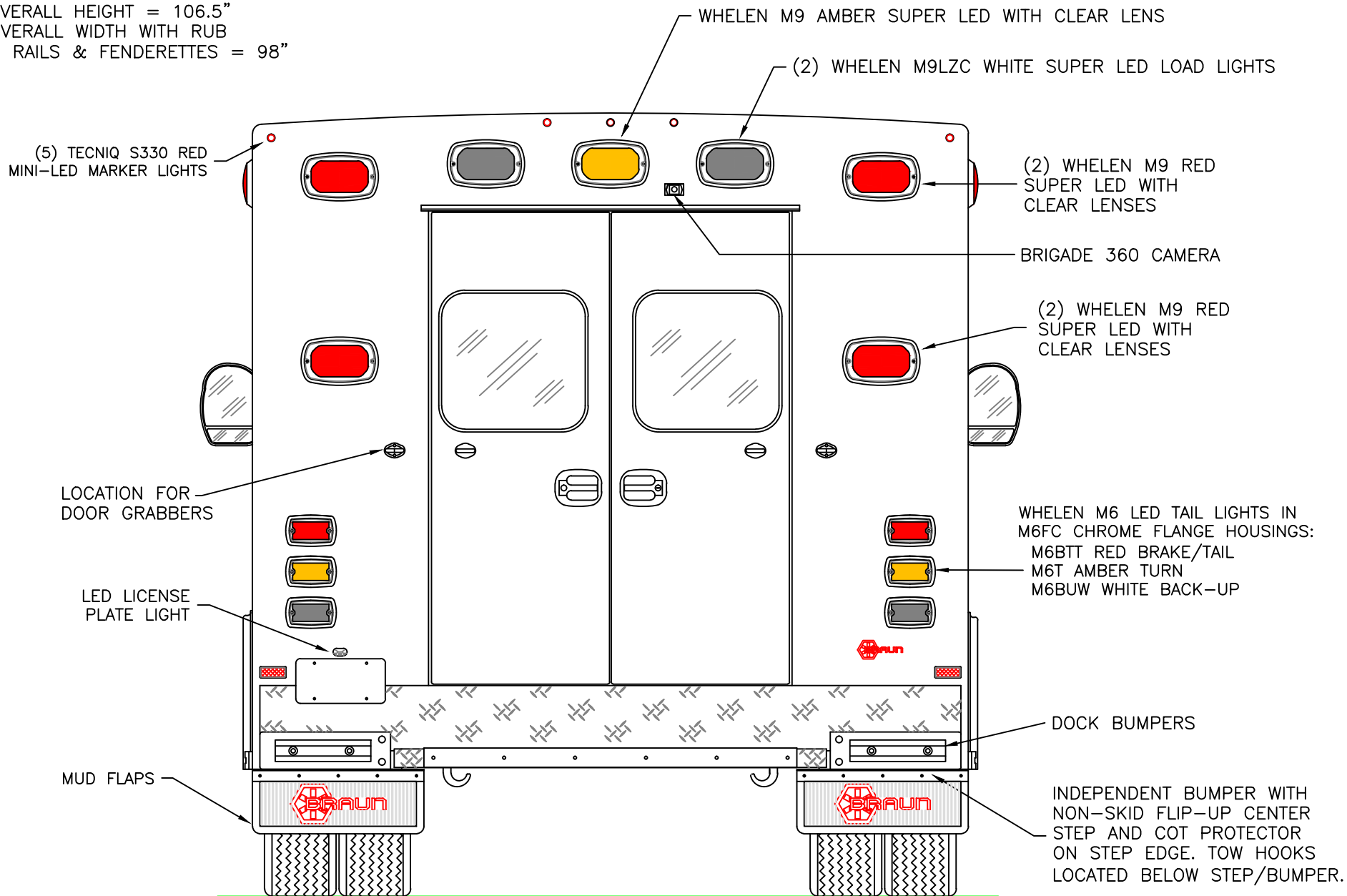
2018 FRONT EXTERIOR VIEW
 CHIEF XL-III/FORD E-450 CHASSIS-GAS ENGINE

DATE:
 8-3-18
 DWG. AAB REV. A
 DATE:

DRAWING NO.
 DEMO-1

APPROVAL SIGNATURE:

DIMENSIONS FOR OVERALL HEIGHT AND LENGTH ARE APPROXIMATE
 OVERALL HEIGHT = 106.5"
 OVERALL WIDTH WITH RUB
 RAILS & FENDERETTES = 98"



THIS DRAWING IS FOR REPRESENTATIONAL PURPOSES ONLY. DETAILS ARE CONCEPTUAL AND ARE SUBJECT TO CHANGE DURING DESIGN AND CONSTRUCTION
 DIMENSIONS ARE APPROXIMATE UNLESS NOTED OTHERWISE TO MEET A SPECIFIC CUSTOMER NEED.

PENN CARE DEMO



2018 REAR EXTERIOR VIEW
 CHIEF XL-III/FORD E-450 CHASSIS

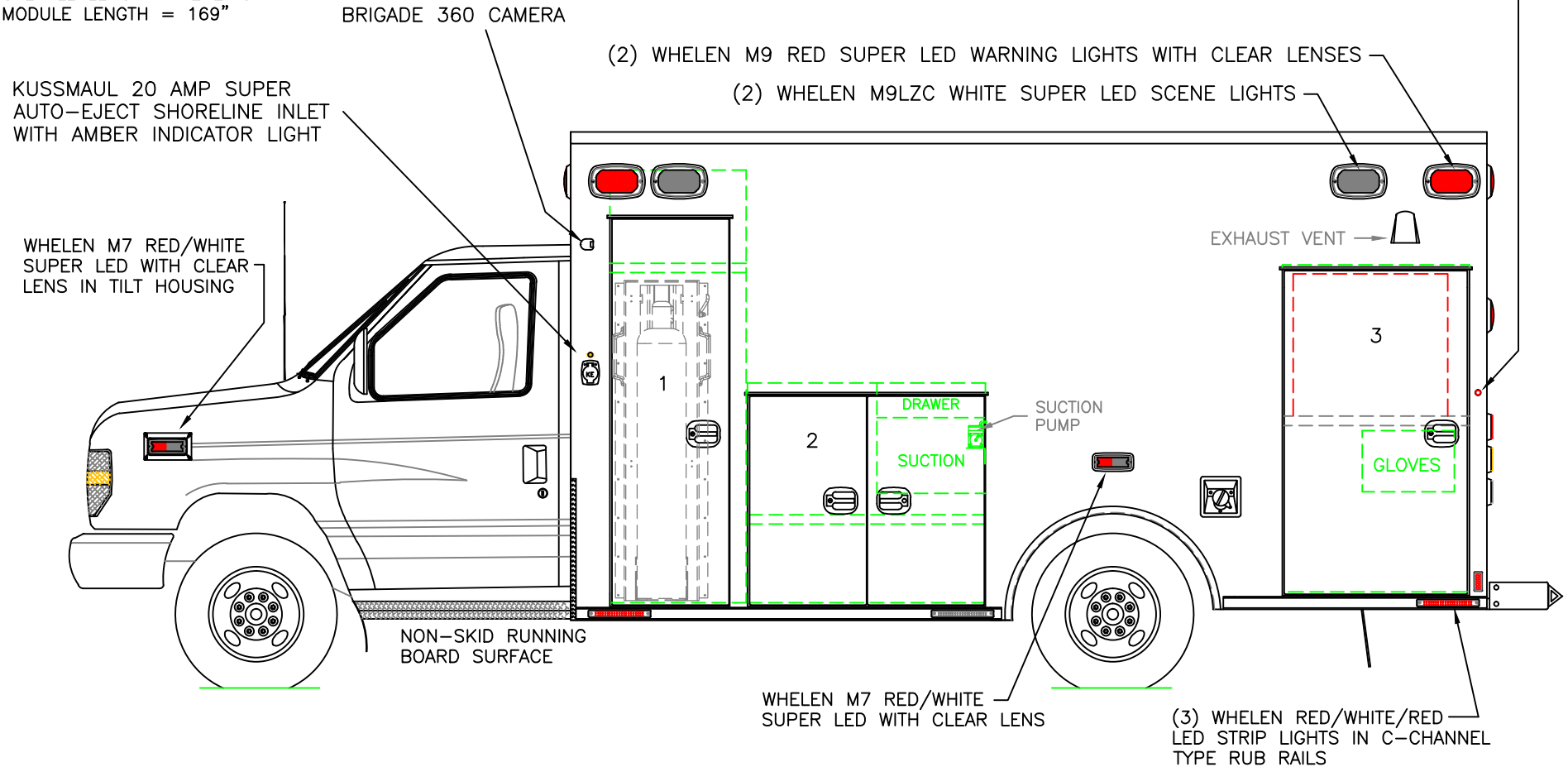
DATE:
8-3-18
DWG.
AAB

REV.
A

DRAWING NO.
DEMO-2

DIMENSIONS FOR OVERALL HEIGHT AND LENGTH ARE APPROXIMATE
 OVERALL HEIGHT = 106.5"
 OVERALL LENGTH = 272.75"
 MODULE LENGTH = 169"

TECNIQ S330 RED MINI-LED MARKER
 LIGHT TO ALSO FLASH WITH TURN SIGNAL



COMPARTMENT
 O.S.S #1

CLEAR OPENING: 70.00h x 18.25w
 INSIDE DIM'S.: 79.75h x 24.25w x 20.75d
 BRAUN EZ-O2 OXYGEN LIFT ON INSIDE OF DOOR
 (1) ADJUSTABLE SHELF ABOVE OXYGEN

O.S.S #2

CLEAR OPENING: 37.50h x 38.50w
 INSIDE DIM'S.: 40.50h x 43.75w x 20.75d
 (1) ADJUSTABLE SHELF

O.S.S #3

CLEAR OPENING: 58.50h x 30.75w
 INSIDE DIM'S.: 60.25h x 34.50w x 20.75d
 INSIDE/OUTSIDE ACCESS WITH (1) FIXED
 SHELF LOCATED AT BOTTOM OF OPENING
 WITH RUBBER GASKET ON EDGE OF SHELF
 THAT SEALS TO INSIDE OF DOOR

COMPARTMENTS TO HAVE LED ROPE LIGHTS

THIS DRAWING IS FOR REPRESENTATIONAL PURPOSES ONLY. DETAILS ARE CONCEPTUAL AND ARE SUBJECT TO CHANGE DURING DESIGN AND CONSTRUCTION
 DIMENSIONS ARE APPROXIMATE UNLESS NOTED OTHERWISE TO MEET A SPECIFIC CUSTOMER NEED.

PENN CARE DEMO



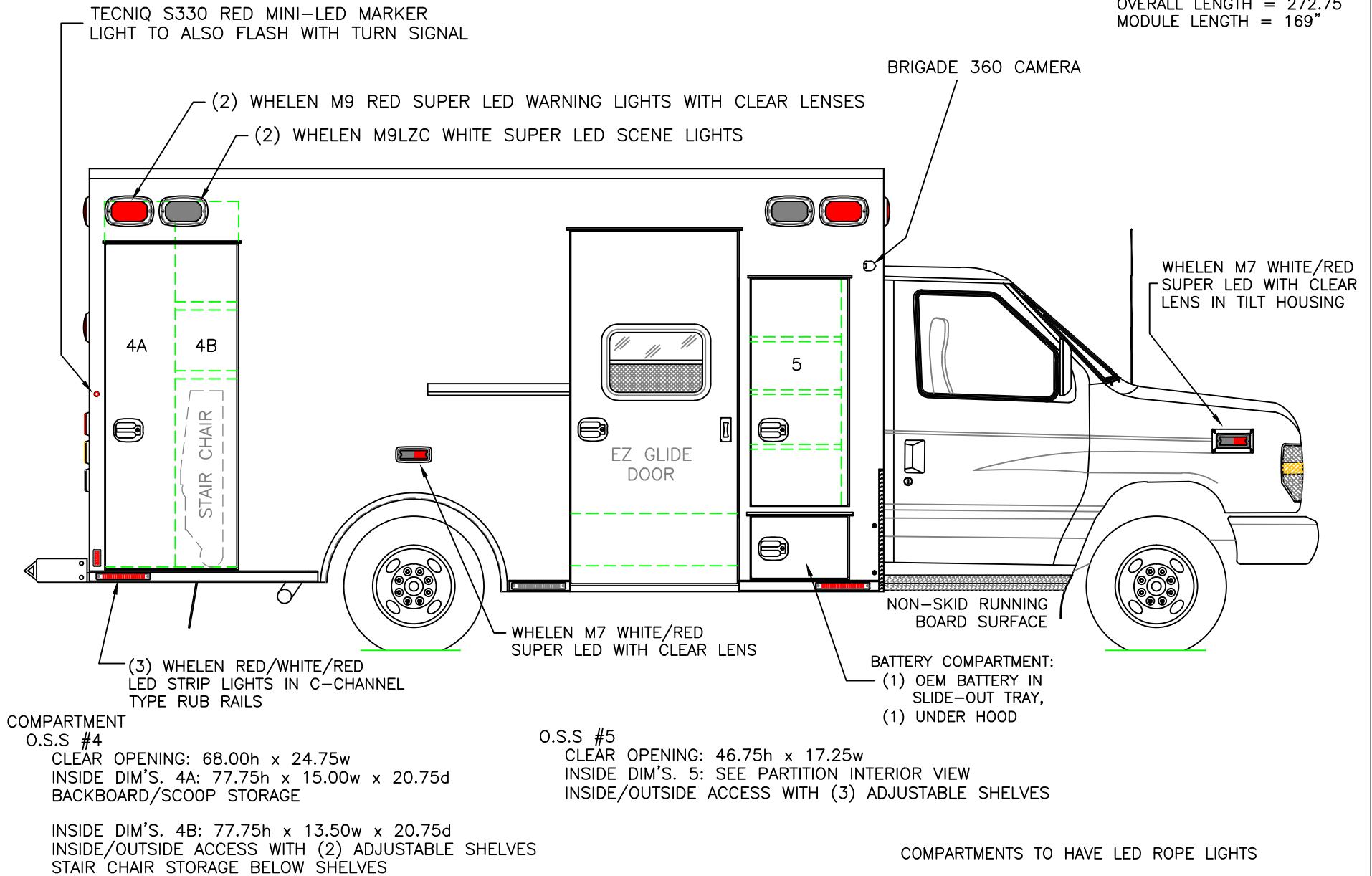
2018 STREETSIDE EXTERIOR VIEW
 CHIEF XL-III/FORD E-450 CHASSIS

DATE:
 7-5-18
 DWG.
 GLF

REV.
 NR

DRAWING NO.
 DEMO-3

DIMENSIONS FOR OVERALL HEIGHT AND LENGTH ARE APPROXIMATE
 OVERALL HEIGHT = 106.5"
 OVERALL LENGTH = 272.75"
 MODULE LENGTH = 169"



THIS DRAWING IS FOR REPRESENTATIONAL PURPOSES ONLY. DETAILS ARE CONCEPTUAL AND ARE SUBJECT TO CHANGE DURING DESIGN AND CONSTRUCTION
 DIMENSIONS ARE APPROXIMATE UNLESS NOTED OTHERWISE TO MEET A SPECIFIC CUSTOMER NEED.

PENN CARE DEMO

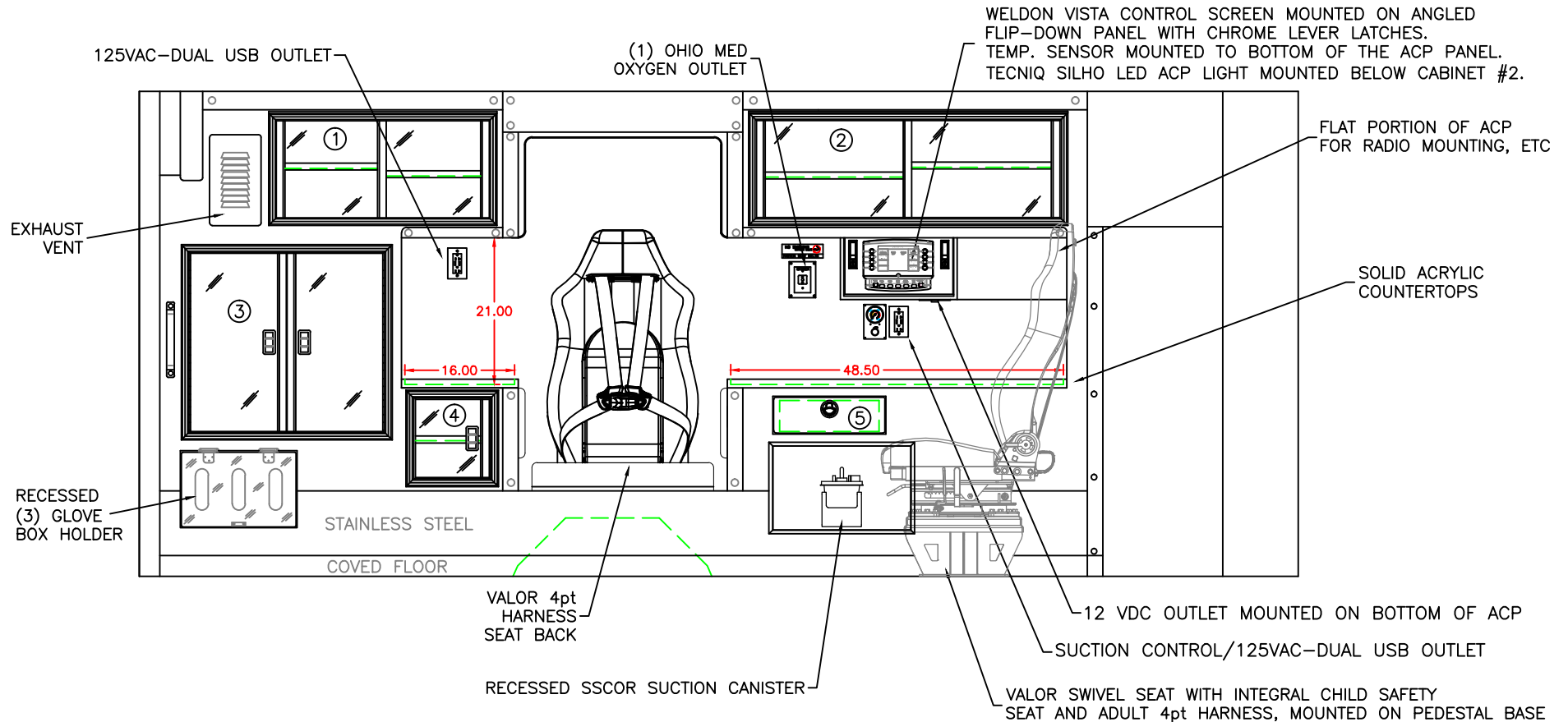


2018 CURBSIDE EXTERIOR VIEW
 CHIEF XL-III/FORD E-450 CHASSIS

DATE:
8-3-18
DWG. AAB REV. A

DRAWING NO.
DEMO-4

COMPARTMENTS #1 & #2 HAVE LIFT-UP RESTOCKING FRAMES



COMPARTMENT

#1 DOOR OPENING: 14.00h x 31.00w
 INSIDE DIMS: 16.50h x 33.00w x 17.25d
 (1) ADJ SHELF EACH SIDE OF CENTER DIVIDER
 SLIDING POLYCARBONATE DOORS
 TOTAL CABINET WEIGHT RATING = 25 lbs.

#2 DOOR OPENING: 14.00h x 44.25w
 INSIDE DIMS: 16.50h x 46.25w x 17.25d
 (1) ADJ SHELF EACH SIDE OF CENTER DIVIDER
 SLIDING POLYCARBONATE DOORS
 TOTAL CABINET WEIGHT RATING = 25 lbs.

#3 DOOR OPENING: 26.25h x 28.50w
 INSIDE/OUTSIDE ACCESS WITH EXTERIOR SHELF
 FLUSH WITH BOTTOM OF OPENING
 HINGED POLYCARBONATE DOORS WITH FULL HANDLES
 CENTER SQUEEZE LATCHES
 TOTAL CABINET WEIGHT RATING = 40 lbs.

#4 DOOR OPENING: 11.75h x 11.25w
 INSIDE DIMS: 13.50h x 13.00w x 17.25d
 LEFT-HINGED POLYCARBONATE DOOR WITH FULL HANDLE
 CENTER SQUEEZE LATCH
 (1) ADJUSTABLE SHELF
 TOTAL CABINET WEIGHT RATING = 15 lbs.

#5 PULL-OUT DRAWER WITH HINGED ACRYLIC WRITING SURFACE
 INSIDE DIMS: 4.50h x 14.50w x 13.25d
 LOCKING STAINLESS STEEL FLUSH PULL LATCH
 TOTAL DRAWER WEIGHT RATING = 10 lbs.

CABINETS TO BE ALUMINUM

THIS DRAWING IS FOR REPRESENTATIONAL PURPOSES ONLY. DETAILS ARE CONCEPTUAL AND ARE SUBJECT TO CHANGE DURING DESIGN AND CONSTRUCTION
 DIMENSIONS ARE APPROXIMATE UNLESS NOTED OTHERWISE TO MEET A SPECIFIC CUSTOMER NEED.

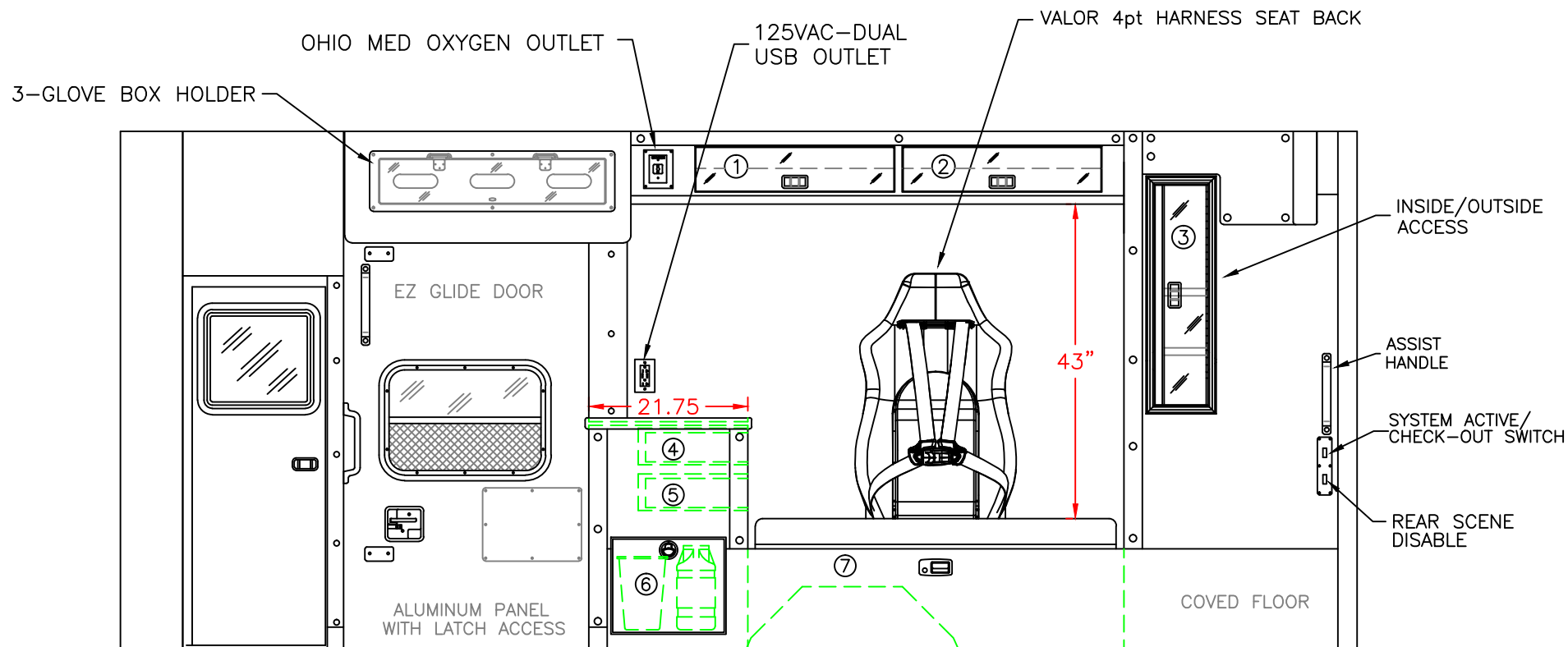
PENN CARE DEMO



2018 STREETSIDE INTERIOR VIEW
 CHIEF XL-III

DATE:
8-3-18
DWG. AAB REV. A

DRAWING NO.
DEMO-5



COMPARTMENT

#1 & #2 DOOR OPENINGS: 6.25h x 27.25w
 INSIDE DIMS: 6.25h x 27.25w x 10.25d
 TOP HINGED POLYCARBONATE DOORS
 CENTER SQUEEZE LATCHES
 TOTAL CABINET WEIGHT RATING = 10 lbs. EACH

#3 DOOR OPENING: 30.00h x 7.25w
 INSIDE/OUTSIDE ACCESS
 HINGED POLYCARBONATE DOOR WITH FULL HANDLE
 CENTER SQUEEZE LATCH
 TOTAL CABINET WEIGHT RATING = 25 lbs.

#4 & #5 PULL-OUT DRAWERS TOWARDS SEAT
 INSIDE DIMS: 4.00h x 10.00w x 14.00d
 LOCKING STAINLESS STEEL FLUSH PULL LATCHES
 TOTAL DRAWER WEIGHT RATING = 10 lbs. EACH

#6 = PULL OUT SHARPS/WASTE DRAWER TOWARDS AISLE
 8-QUART WASTE/6.9-QUART SHARPS
 LOCKING STAINLESS STEEL FLUSH PULL LATCH
 TOTAL DRAWER WEIGHT RATING = 10 lbs.

#7 INSIDE DIM'S: 14.25h x 51.00w x 21.00d

CABINETS TO BE ALUMINUM
 COUNTERTOP TO BE SOLID ACRYLIC

THIS DRAWING IS FOR REPRESENTATIONAL PURPOSES ONLY. DETAILS ARE CONCEPTUAL AND ARE SUBJECT TO CHANGE DURING DESIGN AND CONSTRUCTION
 DIMENSIONS ARE APPROXIMATE UNLESS NOTED OTHERWISE TO MEET A SPECIFIC CUSTOMER NEED.

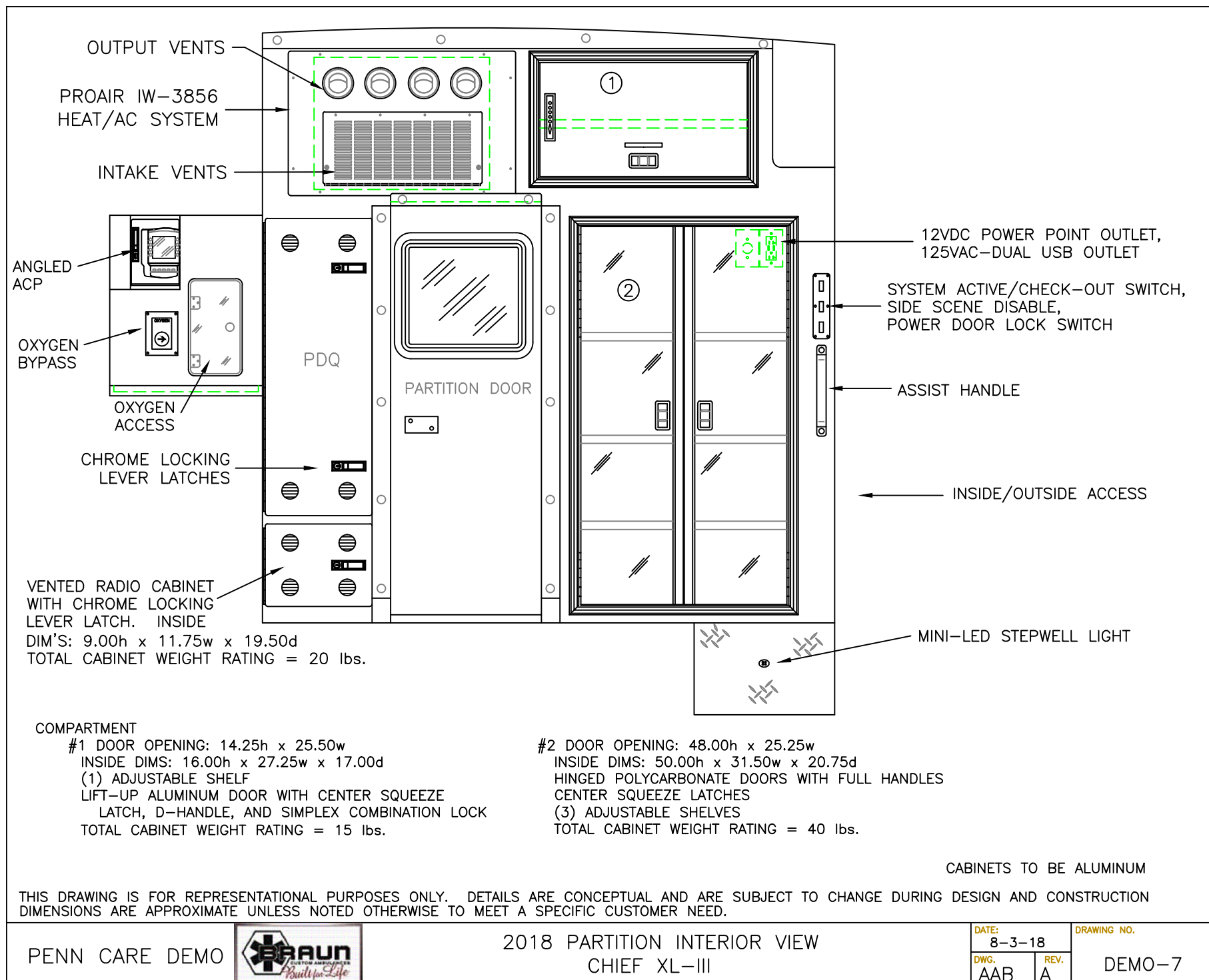
PENN CARE DEMO

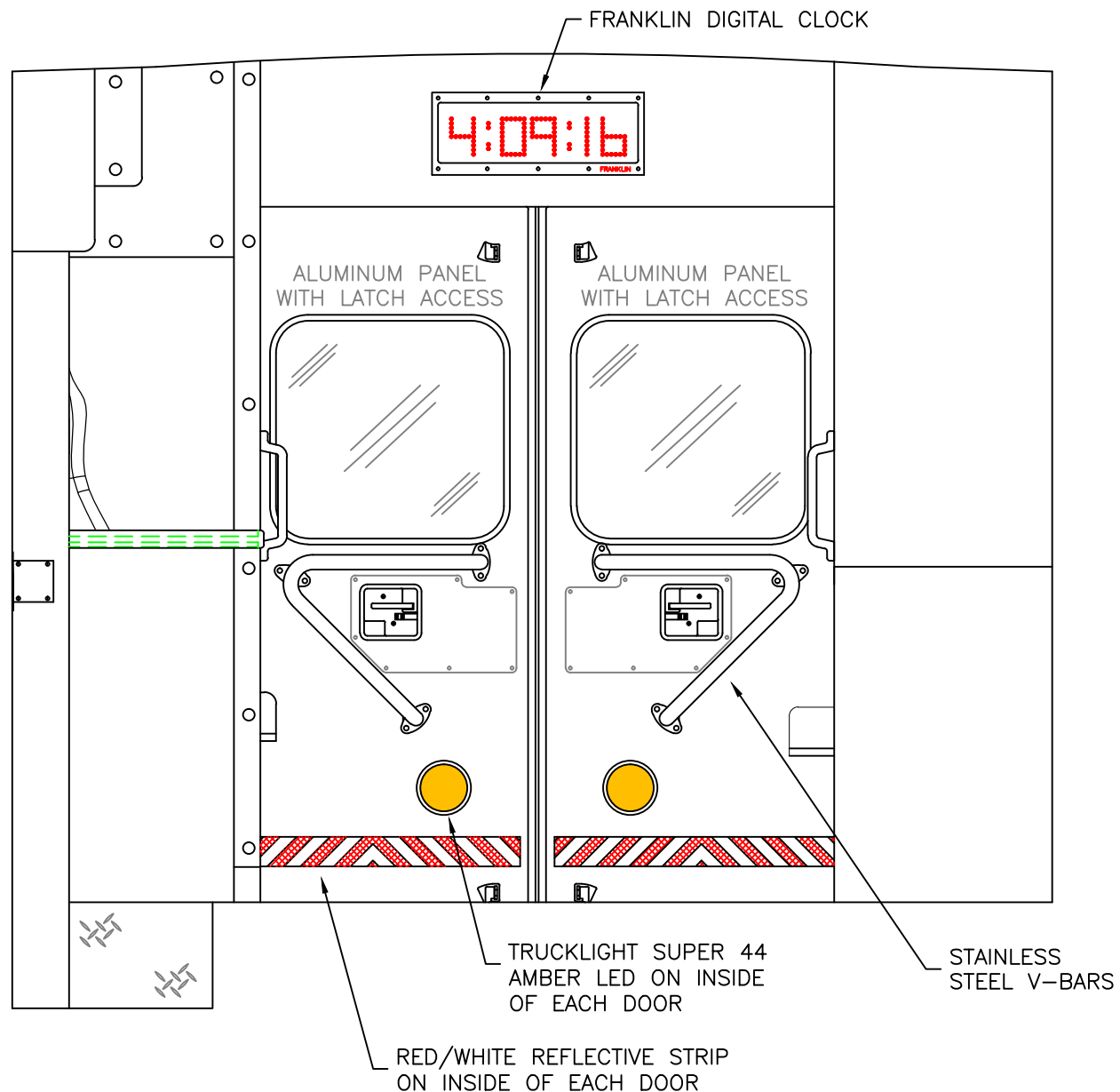


2018 CURBSIDE INTERIOR VIEW
 CHIEF XL-III

DATE:
 8-3-18
 DWG.
 AAB

REV.
 A
 DRAWING NO.
 DEMO-6





THIS DRAWING IS FOR REPRESENTATIONAL PURPOSES ONLY. DETAILS ARE CONCEPTUAL AND ARE SUBJECT TO CHANGE DURING DESIGN AND CONSTRUCTION DIMENSIONS ARE APPROXIMATE UNLESS NOTED OTHERWISE TO MEET A SPECIFIC CUSTOMER NEED.

PENN CARE DEMO

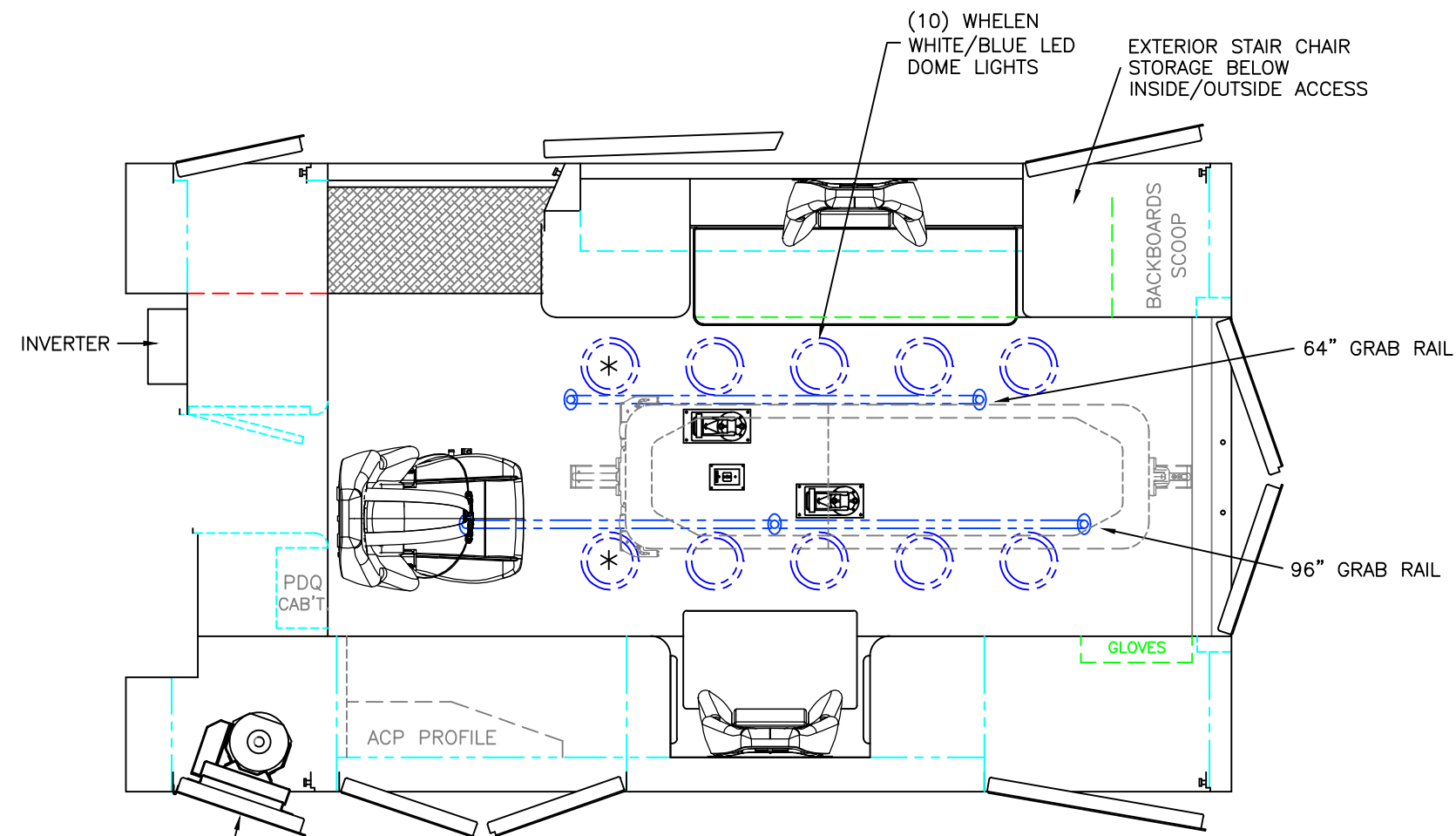


2018 REAR INTERIOR VIEW
CHIEF XL-III

1:12

DATE:	8-3-18
DWG.	REV.
AAB	A

DRAWING NO.
DEMO-8



BRAUN EZ-02 LIFT
ON INSIDE OF
COMPARTMENT DOOR

 = (2) RECESSED CEILING IV HANGER LOCATIONS

 = (1) CEILING OXYGEN OUTLET

* = (2) ANTENNA BASES LOCATED OUTBOARD OF
DOME LIGHTS WITH COAX SERVICE LOOP

TAPPING PLATES AND PREWIRE FOR POSSIBLE FUTURE INSTALL
OF STRYER POWERLOAD COT SYSTEM. (COT OUTLINE SHOWN
ON DRAWING FOR REFERENCE)

MODULE WIDTH = 96"
MODULE LENGTH = 169"
MODULE HEAD ROOM = 72"

THIS DRAWING IS FOR REPRESENTATIONAL PURPOSES ONLY. DETAILS ARE CONCEPTUAL AND ARE SUBJECT TO CHANGE DURING DESIGN AND CONSTRUCTION
DIMENSIONS ARE APPROXIMATE UNLESS NOTED OTHERWISE TO MEET A SPECIFIC CUSTOMER NEED.

PENN CARE DEMO



2018 FLOOR INTERIOR VIEW
CHIEF XL-III

DATE:
7-5-18
DWG. GLF
REV. NR

DRAWING NO.
DEMO-9