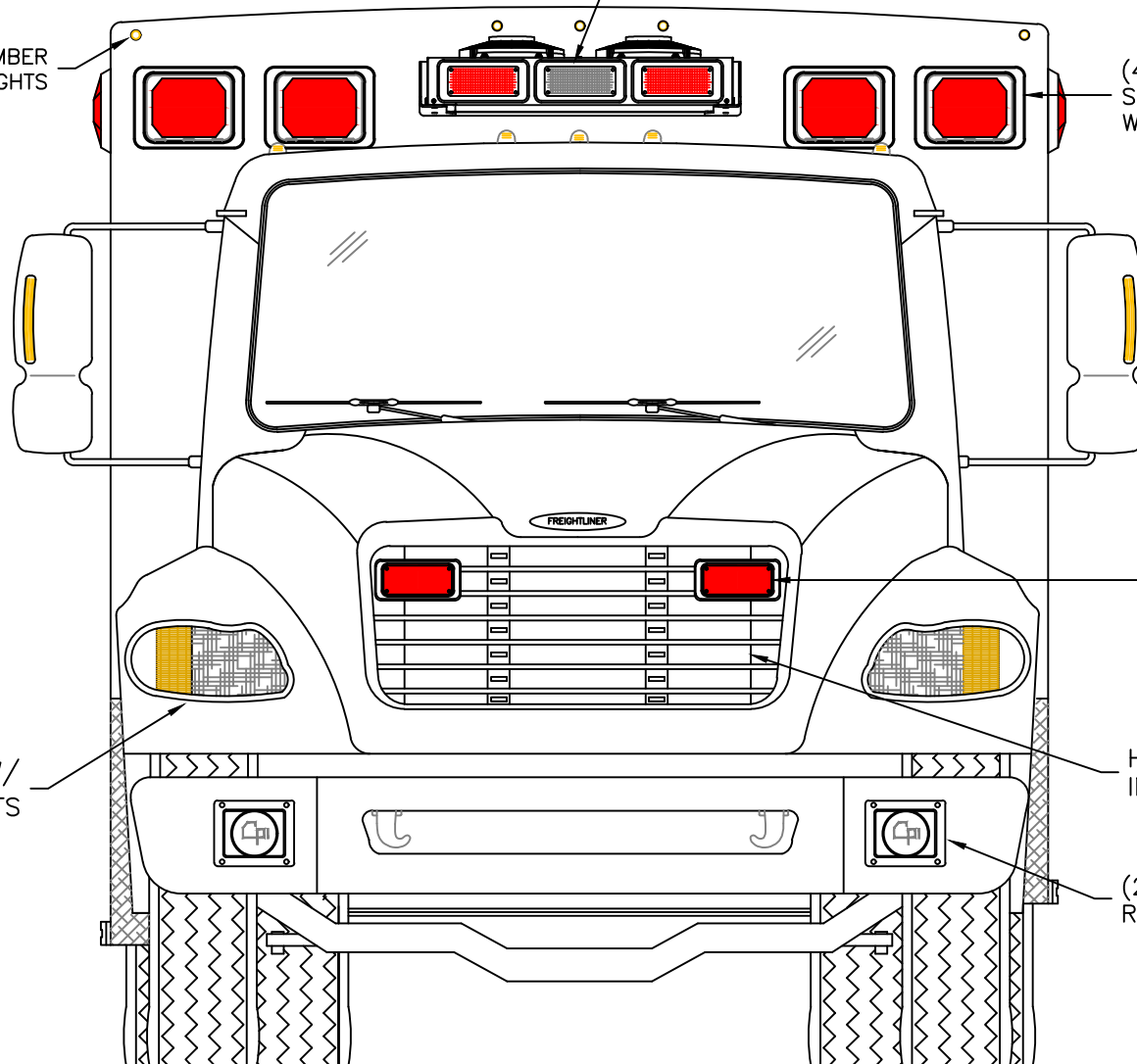


DIMENSIONS ARE APPROXIMATE
 OVERALL HEIGHT = 112"
 OVERALL WIDTH WITH RUB
 RAILS & FENDERETTES = 98"

CONDENSER WITH (3) WHELEN 700 LED
 LIGHTS WITH CLEAR LENSES ON THE FACE: R/W/R

(5) AMBER
 MINI-LED MARKER LIGHTS

(4) WHELEN 900 RED
 SUPER LED LIGHTS
 WITH CLEAR LENSES



(2) WHELEN 700 RED
 SUPER LED GRILLE
 LIGHTS WITH CLEAR
 LENSES

FLASHING HEADLIGHTS W/
 DAYTIME RUNNING LIGHTS

HIDDEN UNLOCK SWITCH
 IN GRILLE AREA

(2) 100W SIREN SPEAKERS
 RECESSED INTO BUMPER

THIS DRAWING IS FOR REPRESENTATIONAL PURPOSES ONLY. DETAILS ARE CONCEPTUAL AND ARE SUBJECT TO CHANGE DURING DESIGN AND CONSTRUCTION
 DIMENSIONS ARE APPROXIMATE UNLESS NOTED OTHERWISE TO MEET A SPECIFIC CUSTOMER NEED.

MODEL YEAR 2025



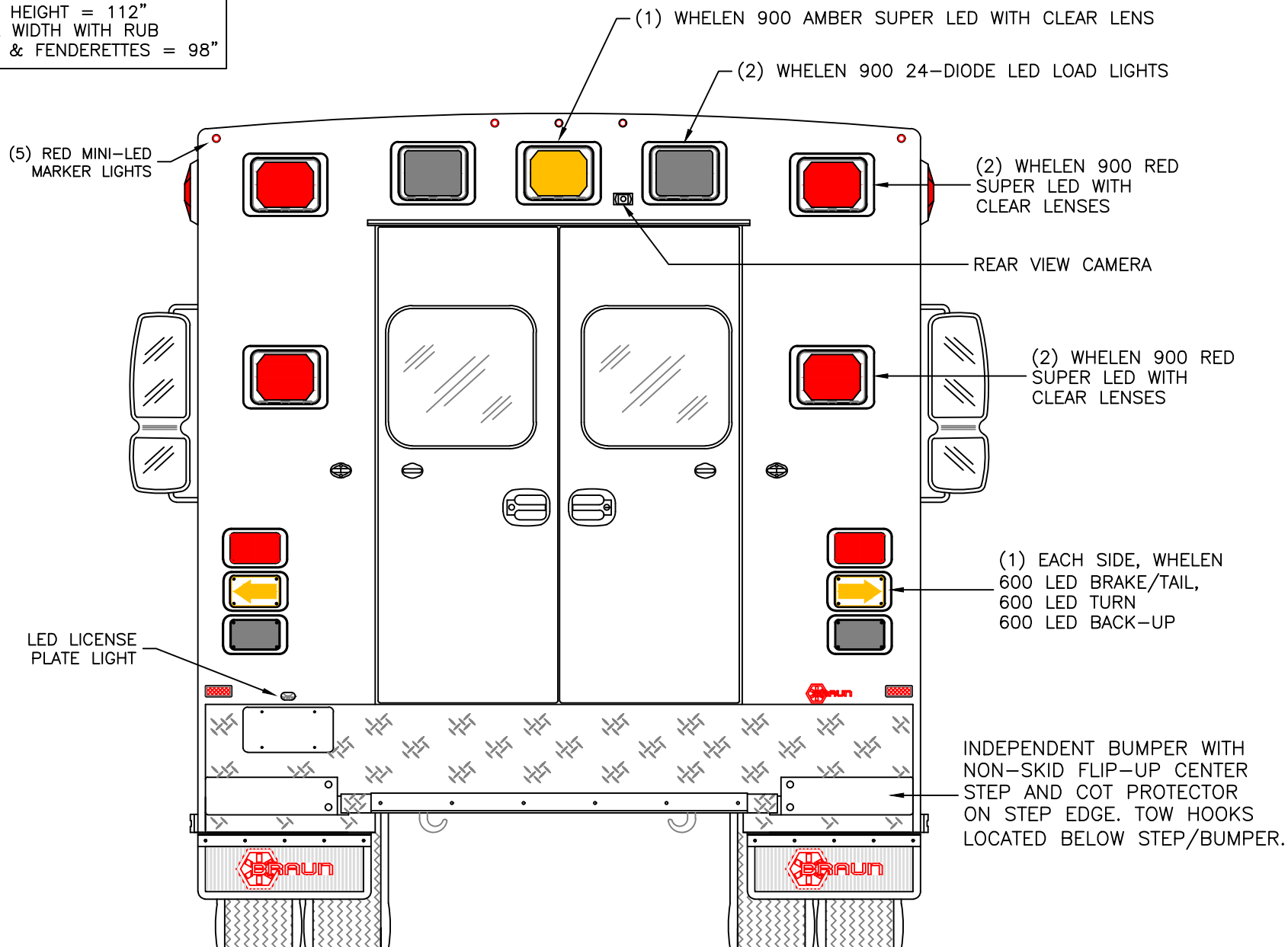
FRONT EXTERIOR VIEW-STANDARD CAB
 SUPER CHIEF-I/FREIGHTLINER M2 CHASSIS

DATE:
 2-22-24
 DWG. TKD
 REV. NR
 DATE:

DRAWING NO.
 SUPERCHIEF-1

APPROVAL SIGNATURE:

DIMENSIONS ARE APPROXIMATE
 OVERALL HEIGHT = 112"
 OVERALL WIDTH WITH RUB
 RAILS & FENDERETTES = 98"



THIS DRAWING IS FOR REPRESENTATIONAL PURPOSES ONLY. DETAILS ARE CONCEPTUAL AND ARE SUBJECT TO CHANGE DURING DESIGN AND CONSTRUCTION
 DIMENSIONS ARE APPROXIMATE UNLESS NOTED OTHERWISE TO MEET A SPECIFIC CUSTOMER NEED.

MODEL YEAR 2025

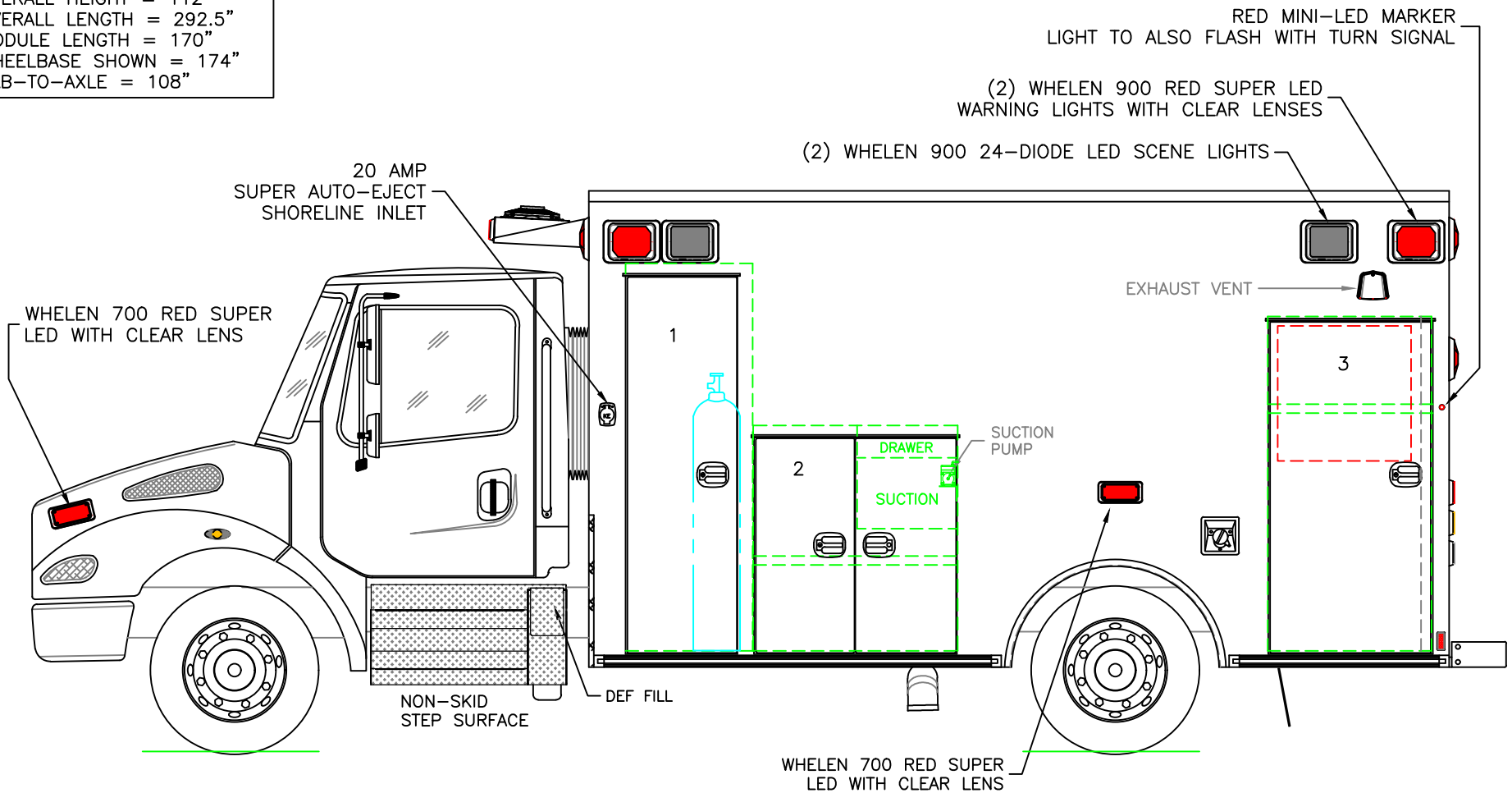


REAR EXTERIOR VIEW
 SUPER CHIEF-I/FREIGHTLINER M2 CHASSIS

DATE:
2-22-24
 DWG. TKD
 REV. NR

DRAWING NO.
 SUPERCHIEF-2

DIMENSIONS ARE APPROXIMATE
 OVERALL HEIGHT = 112"
 OVERALL LENGTH = 292.5"
 MODULE LENGTH = 170"
 WHEELBASE SHOWN = 174"
 CAB-TO-AXLE = 108"



COMPARTMENT

O.S.S #1

CLEAR OPENING: 73.00h x 18.25w
 INSIDE DIM'S.: 76.50h x 25.00w x 21.75d
 MAIN OXYGEN STORAGE

O.S.S #2

CLEAR OPENING: 41.25h x 34.75w
 INSIDE DIM'S.: 44.50h x 40.25w x 21.75d
 (1) ADJUSTABLE SHELF

O.S.S #3

CLEAR OPENING: 64.25h x 28.75w
 INSIDE DIM'S.: 66.00h x 32.50w x 21.75d
 INSIDE/OUTSIDE ACCESS
 (1) ADJUSTABLE SHELF

THIS DRAWING IS FOR REPRESENTATIONAL PURPOSES ONLY. DETAILS ARE CONCEPTUAL AND ARE SUBJECT TO CHANGE DURING DESIGN AND CONSTRUCTION
 DIMENSIONS ARE APPROXIMATE UNLESS NOTED OTHERWISE TO MEET A SPECIFIC CUSTOMER NEED.

MODEL YEAR 2025

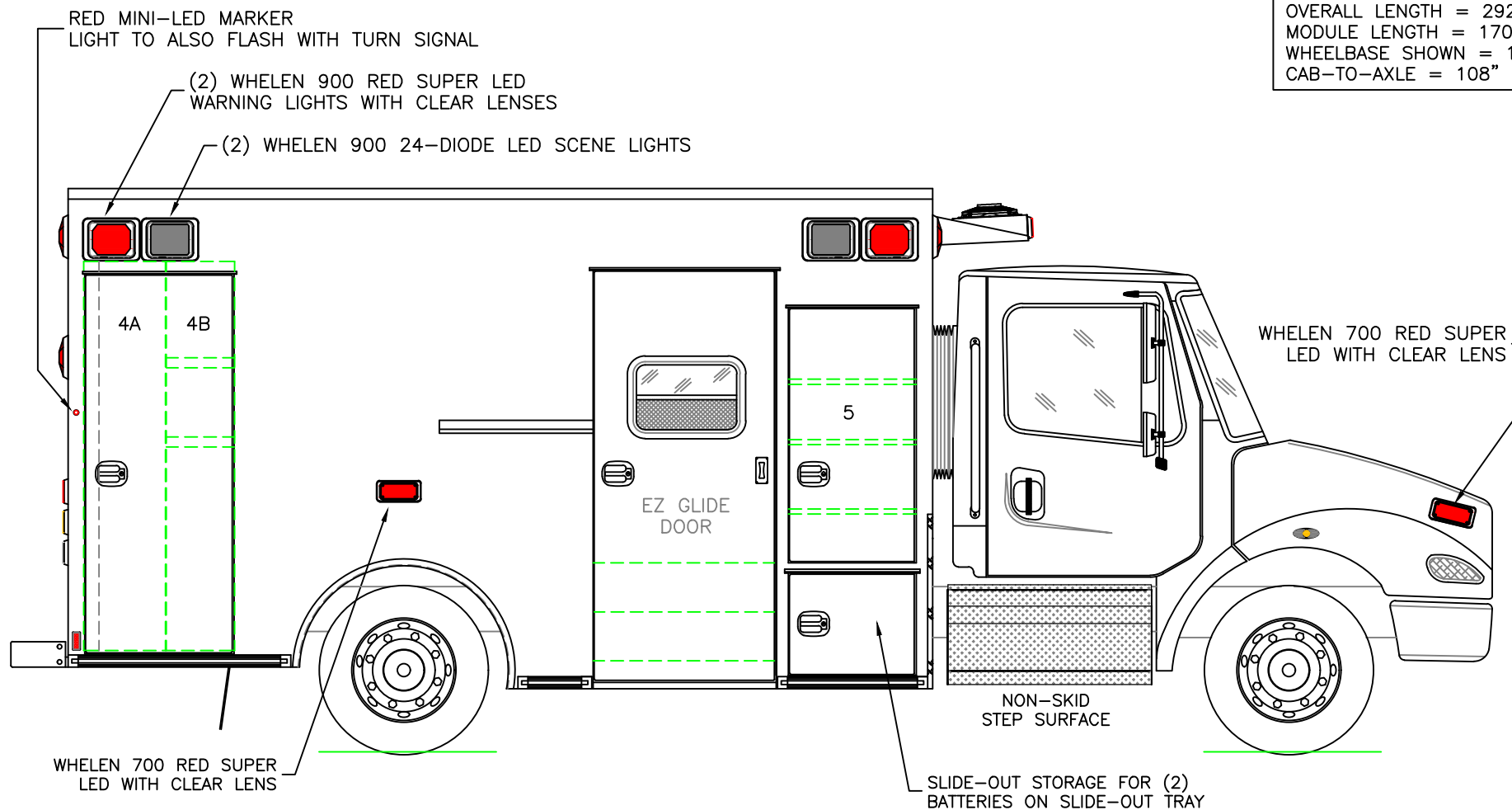


STREETSIDE EXTERIOR VIEW
 SUPER CHIEF-I/FREIGHTLINER M2 CHASSIS

DATE:
 2-22-24
 DWG. REV
 TKD NR

DRAWING NO.
 SUPERCHIEF-3

DIMENSIONS ARE APPROXIMATE
 OVERALL HEIGHT = 112"
 OVERALL LENGTH = 292.5"
 MODULE LENGTH = 170"
 WHEELBASE SHOWN = 174"
 CAB-TO-AXLE = 108"



COMPARTMENT
 O.S.S #4

CLEAR OPENING: 73.00h x 25.25w
 INSIDE DIM'S. 4A: 76.50h x 16.00w x 21.75d
 BACKBOARD/SCOOP STORAGE
 INSIDE DIM'S. 4B: 76.50h x 13.50w x 21.75d
 (2) ADJUSTABLE SHELVES WITH INSIDE/OUTSIDE ACCESS

O.S.S #5

CLEAR OPENING: 48.75h x 21.50w
 INSIDE DIM'S: SEE PARTITION INTERIOR VIEW
 INSIDE/OUTSIDE STORAGE WITH (3) ADJUSTABLE SHELVES

THIS DRAWING IS FOR REPRESENTATIONAL PURPOSES ONLY. DETAILS ARE CONCEPTUAL AND ARE SUBJECT TO CHANGE DURING DESIGN AND CONSTRUCTION
 DIMENSIONS ARE APPROXIMATE UNLESS NOTED OTHERWISE TO MEET A SPECIFIC CUSTOMER NEED.

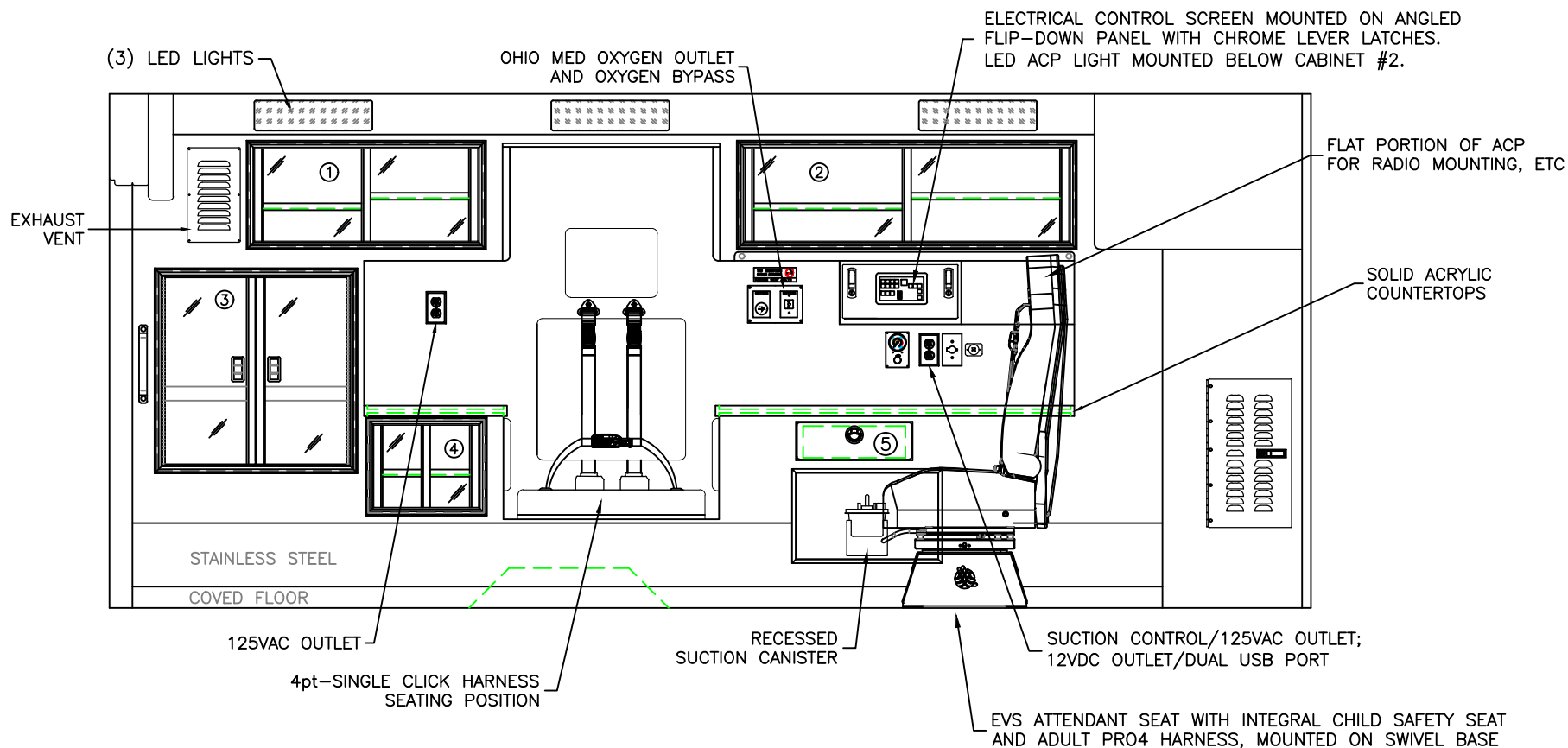
MODEL YEAR 2025



CURBSIDE EXTERIOR VIEW
 SUPER CHIEF-I/FREIGHTLINER M2 CHASSIS

DATE:
 2-22-24
 DWG. REV.
 TKD NR

DRAWING NO.
 SUPERCHIEF-4



COMPARTMENT

#1 DOOR OPENING: 13.00h x 31.50w
 INSIDE DIMS: 14.50h x 33.00w x 19.25d
 (1) ADJ SHELF EACH SIDE OF CENTER DIVIDER
 SLIDING POLYCARBONATE DOORS
 TOTAL CABINET WEIGHT RATING = 25 lbs.

#2 DOOR OPENING: 13.00h x 45.75w
 INSIDE DIMS: 14.50h x 47.25w x 19.25d
 (1) ADJ SHELF EACH SIDE OF CENTER DIVIDER
 SLIDING POLYCARBONATE DOORS
 TOTAL CABINET WEIGHT RATING = 25 lbs.

#3 DOOR OPENING: 26.50h x 26.25w
 INSIDE DIMS: O.S.S. #3
 HINGED POLYCARBONATE DOORS WITH FULL LENGTH
 HANDLES AND CENTER SQUEEZE LATCHES
 TOTAL CABINET WEIGHT RATING = 40 lbs.

#4 DOOR OPENING: 11.50h x 14.75w
 INSIDE DIMS: 13.00h x 16.25w x 19.25d
 (1) ADJUSTABLE SHELF
 SLIDING POLYCARBONATE DOORS
 TOTAL CABINET WEIGHT RATING = 15 lbs.

#5 PULL-OUT DRAWER WITH HINGED ACRYLIC WRITING SURFACE
 INSIDE DIMS: 4.50h x 14.50w x 13.25d
 LOCKING STAINLESS STEEL FLUSH PULL LATCH
 TOTAL DRAWER WEIGHT RATING = 10 lbs.

THIS DRAWING IS FOR REPRESENTATIONAL PURPOSES ONLY. DETAILS ARE CONCEPTUAL AND ARE SUBJECT TO CHANGE DURING DESIGN AND CONSTRUCTION
 DIMENSIONS ARE APPROXIMATE UNLESS NOTED OTHERWISE TO MEET A SPECIFIC CUSTOMER NEED.

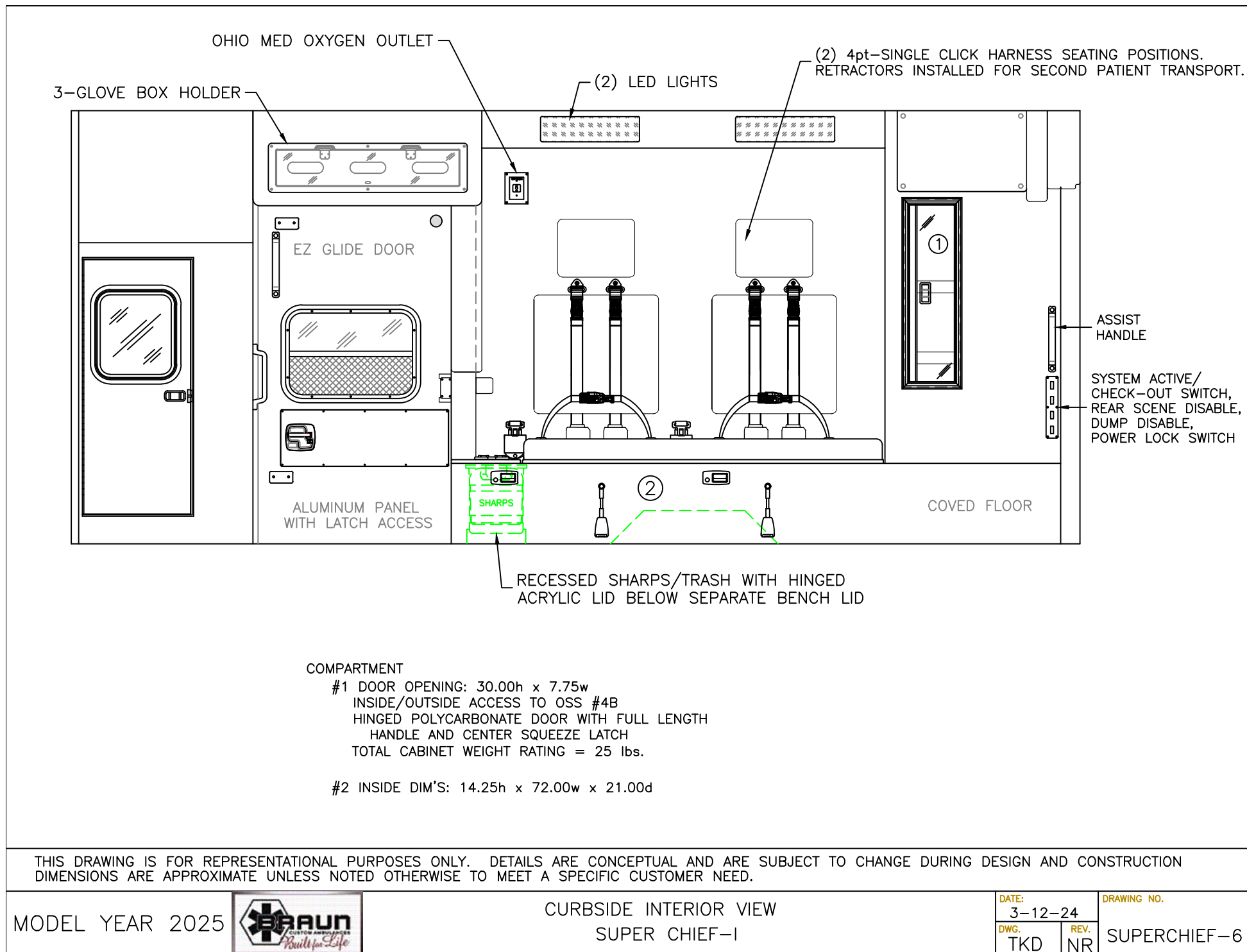
MODEL YEAR 2025

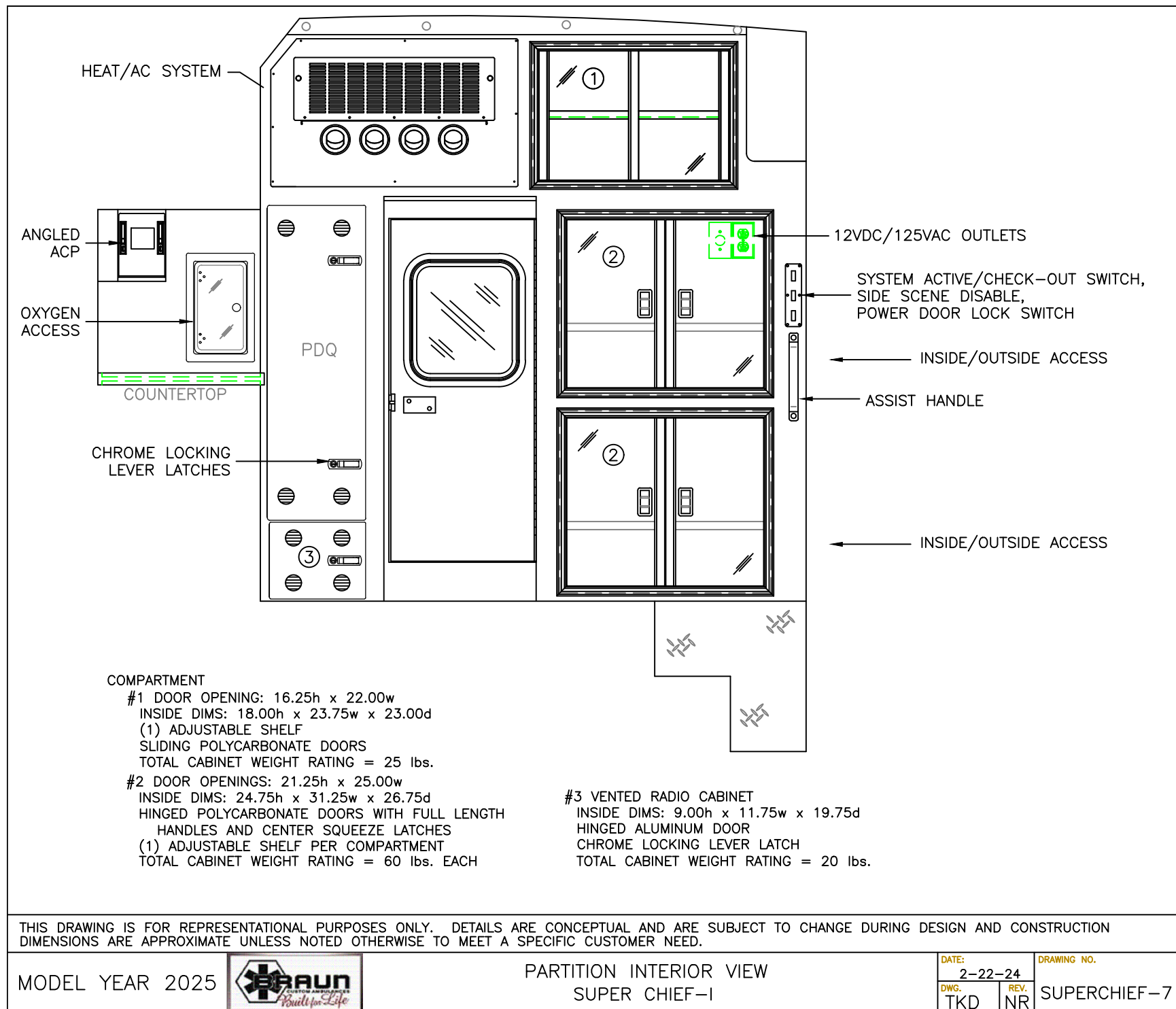


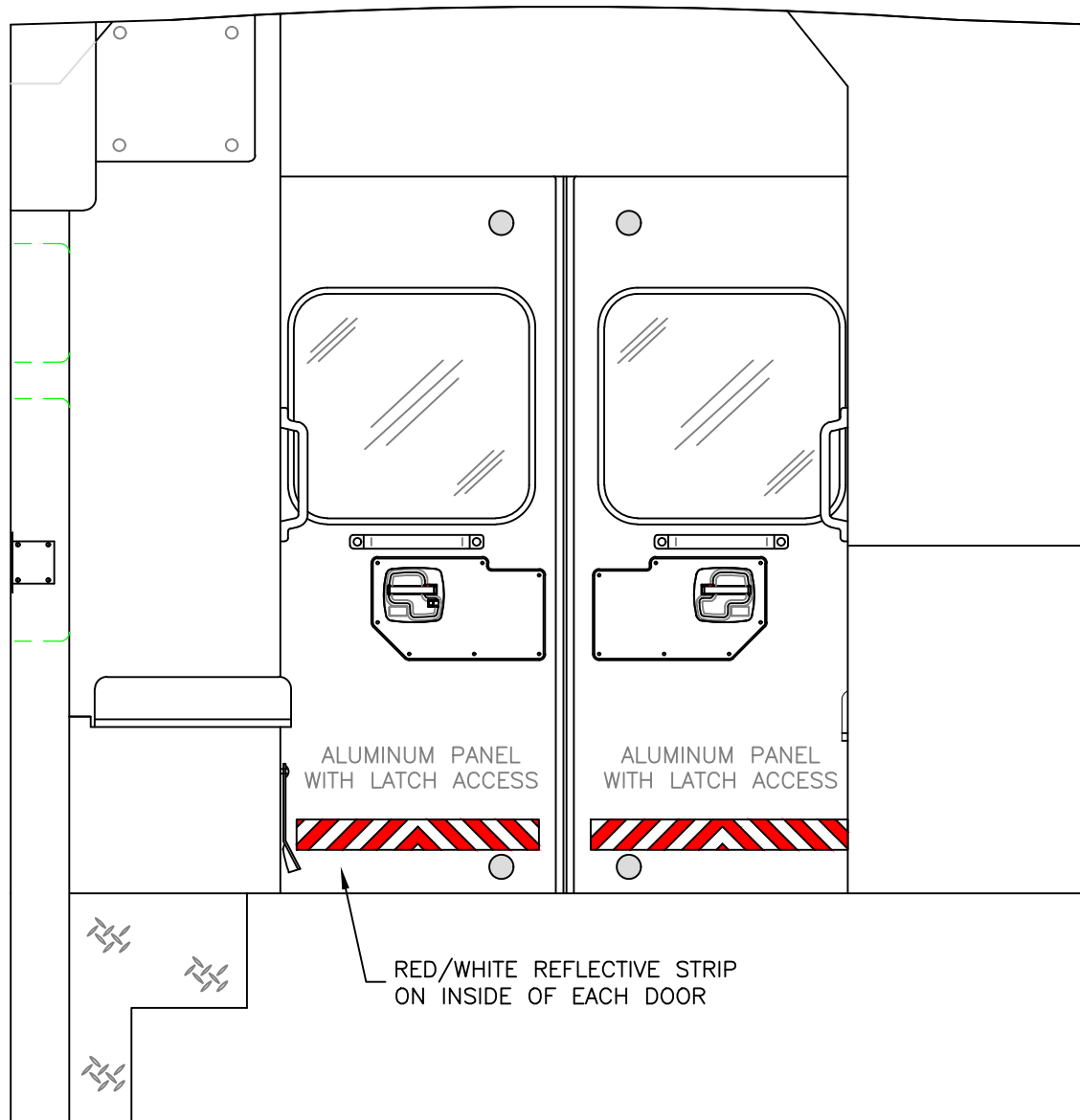
STREETSIDE INTERIOR VIEW
 SUPER CHIEF-I

DATE:
 3-12-24
 DWG. TKD
 REV. NR

DRAWING NO.
 SUPERCHIEF-5







THIS DRAWING IS FOR REPRESENTATIONAL PURPOSES ONLY. DETAILS ARE CONCEPTUAL AND ARE SUBJECT TO CHANGE DURING DESIGN AND CONSTRUCTION
 DIMENSIONS ARE APPROXIMATE UNLESS NOTED OTHERWISE TO MEET A SPECIFIC CUSTOMER NEED.

MODEL YEAR 2025



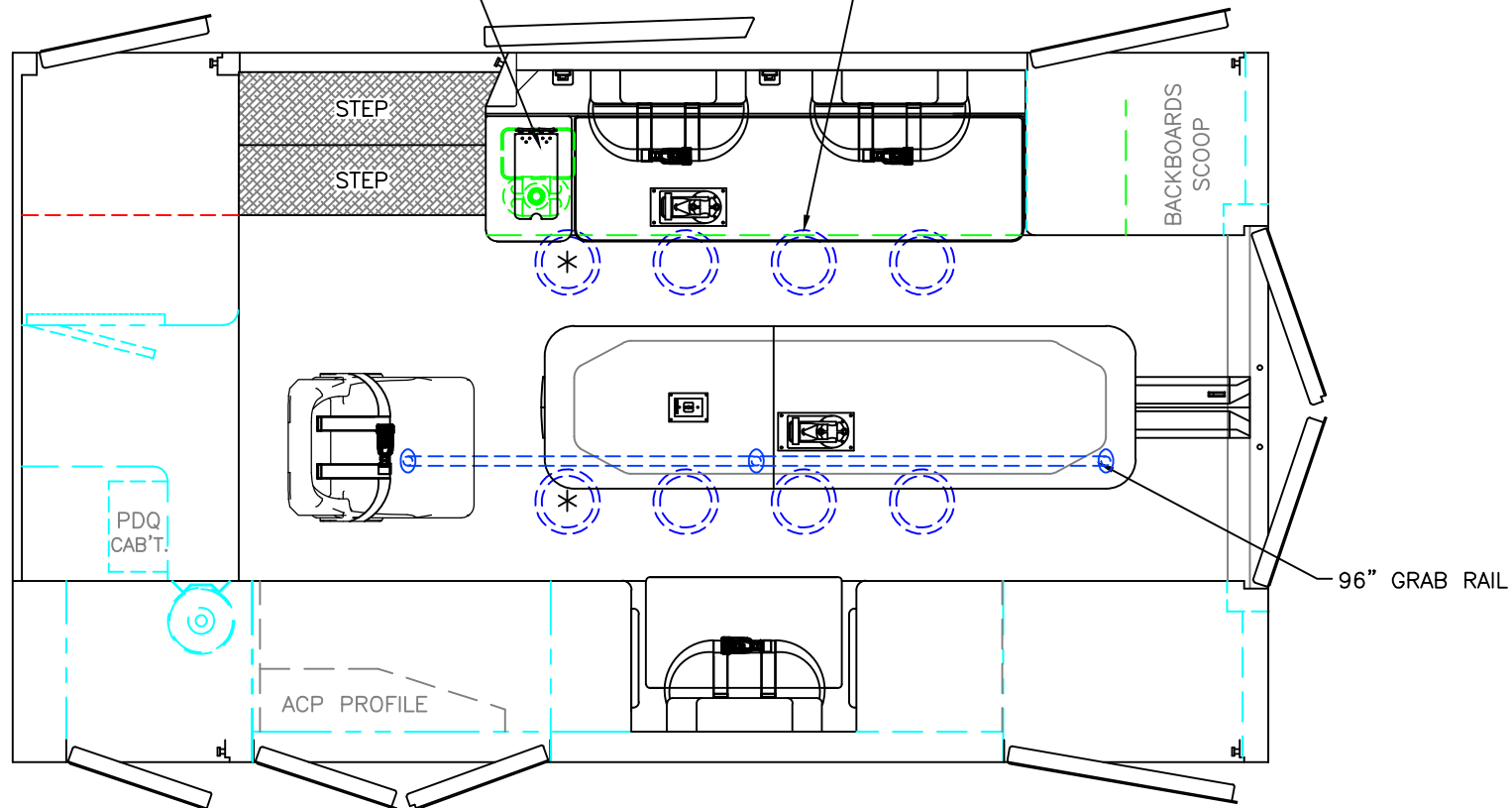
REAR INTERIOR VIEW
 SUPER CHIEF-I

DATE:
 3-12-24
 DWG. TKD
 REV. NR

DRAWING NO.
 SUPERCHIEF-8

RECESSED SHARPS/TRASH WITH HINGED
ACRYLIC LID BELOW SEPARATE BENCH LID

(8) LED
DOME LIGHTS



 = (2) RECESSED CEILING IV HANGER LOCATIONS

 = (1) CEILING OXYGEN OUTLET

* (2) ANTENNA BASES LOCATED OUTBOARD OF
DOME LIGHTS WITH COAX SERVICE LOOP

96" FERNO STAT-TRAC CENTER MOUNT COT HARDWARE

MODULE WIDTH = 96"
MODULE LENGTH = 170"
MODULE HEAD ROOM = 73.5"

THIS DRAWING IS FOR REPRESENTATIONAL PURPOSES ONLY. DETAILS ARE CONCEPTUAL AND ARE SUBJECT TO CHANGE DURING DESIGN AND CONSTRUCTION
DIMENSIONS ARE APPROXIMATE UNLESS NOTED OTHERWISE TO MEET A SPECIFIC CUSTOMER NEED.

MODEL YEAR 2025



FLOOR INTERIOR VIEW
SUPER CHIEF-I

DATE:
3-12-24
DWG.
TKD

REV.
NR

DRAWING NO.
SUPERCHIEF-9