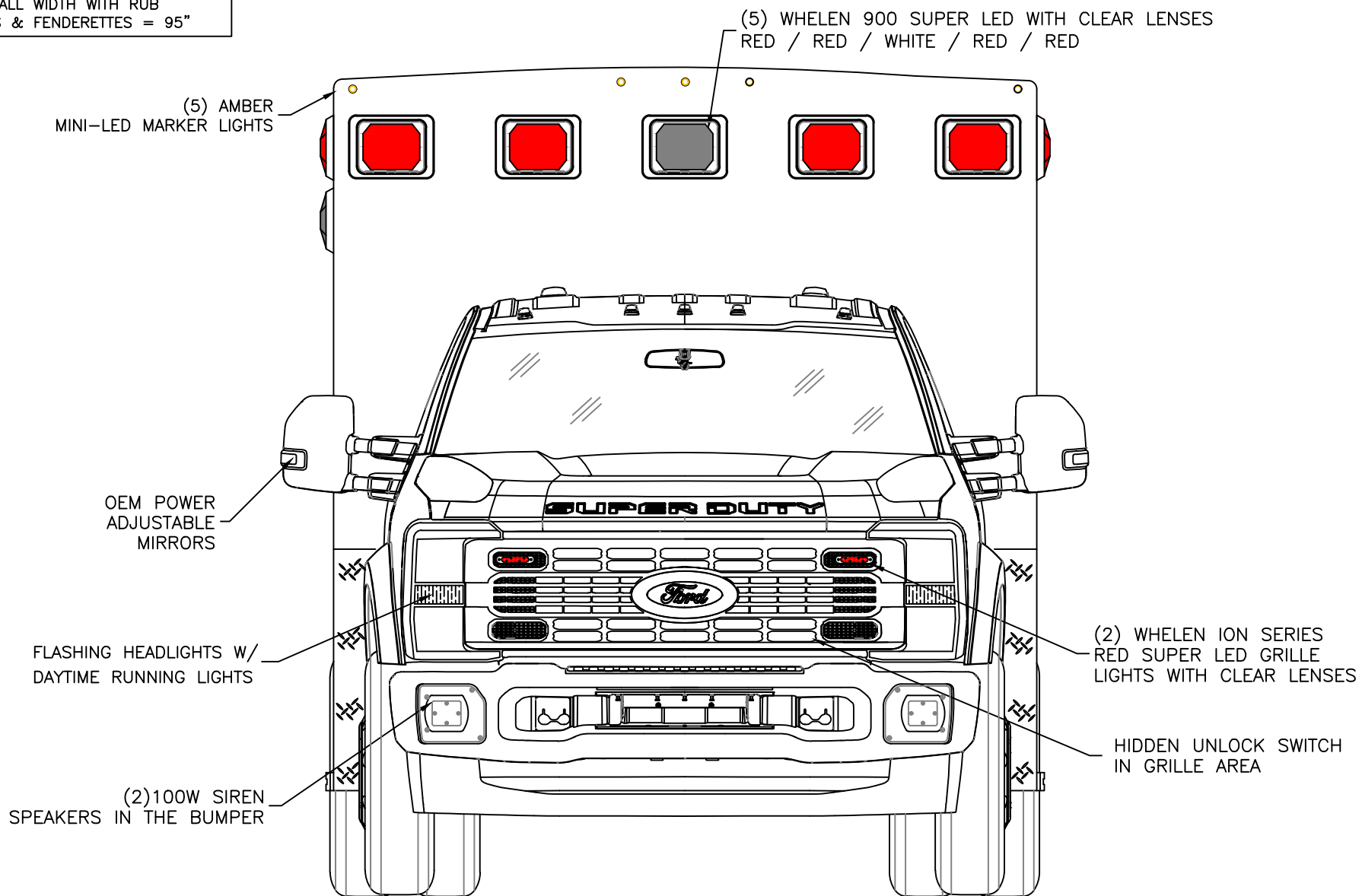


DIMENSIONS ARE APPROXIMATE  
OVERALL HEIGHT = 112"  
OVERALL WIDTH WITH RUB  
RAILS & FENDERETTES = 95"



THIS DRAWING IS FOR REPRESENTATIONAL PURPOSES ONLY. DETAILS ARE CONCEPTUAL AND ARE SUBJECT TO CHANGE DURING DESIGN AND CONSTRUCTION  
DIMENSIONS ARE APPROXIMATE UNLESS NOTED OTHERWISE TO MEET A SPECIFIC CUSTOMER NEED.

MODEL YEAR 2025



FRONT EXTERIOR VIEW  
EXPRESS PLUS / FORD F450 CHASSIS

DATE: 2-21-24  
DWG. TKD REV. NR  
DATE:

DRAWING NO.  
EXPRESSPLUS-1

APPROVAL SIGNATURE:

DIMENSIONS ARE APPROXIMATE  
OVERALL HEIGHT = 112"  
OVERALL WIDTH WITH RUB  
RAILS & FENDERETTES = 95"

(5) RED MINI-LED  
MARKER LIGHTS

WHELEN 900 AMBER SUPER LED WITH CLEAR LENS

(2) WHELEN 900 24-DIODE LED LOAD LIGHTS

(2) WHELEN 900 RED  
SUPER LED LIGHTS  
WITH CLEAR LENSES

LED LICENSE  
PLATE LIGHT

(1) EACH SIDE, WHELEN  
600 LED BRAKE/TAIL,  
600 LED TURN  
600 LED BACK-UP

LIQUID SPRING  
REAR SUSPENSION

INDEPENDENT BUMPER WITH  
NON-SKID FLIP-UP CENTER  
STEP AND COT PROTECTOR  
ON STEP EDGE

THIS DRAWING IS FOR REPRESENTATIONAL PURPOSES ONLY. DETAILS ARE CONCEPTUAL AND ARE SUBJECT TO CHANGE DURING DESIGN AND CONSTRUCTION  
DIMENSIONS ARE APPROXIMATE UNLESS NOTED OTHERWISE TO MEET A SPECIFIC CUSTOMER NEED.

MODEL YEAR 2025



REAR EXTERIOR VIEW  
EXPRESS PLUS

DATE:  
2-21-24

DRAWING NO.

DWG.

REV.

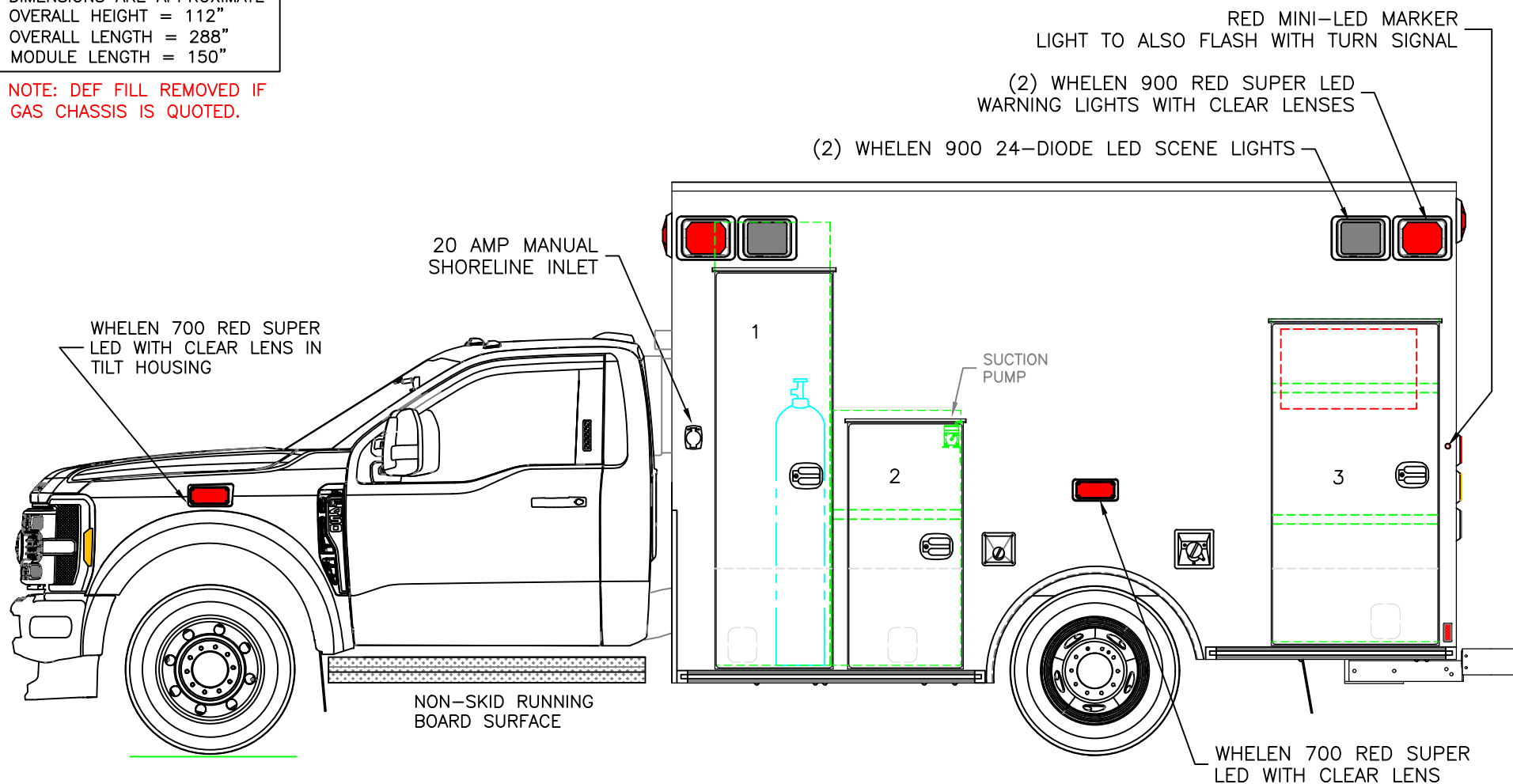
TKD

NR

EXPRESSPLUS-2

DIMENSIONS ARE APPROXIMATE  
 OVERALL HEIGHT = 112"  
 OVERALL LENGTH = 288"  
 MODULE LENGTH = 150"

NOTE: DEF FILL REMOVED IF  
 GAS CHASSIS IS QUOTED.



COMPARTMENT  
 O.S.S #1

CLEAR OPENING: 74.50h x 18.50w  
 INSIDE DIM'S.: 84.75h x 22.00w x 18.50d  
 OXYGEN STORAGE COMPARTMENT

O.S.S #2

CLEAR OPENING: 45.50h x 19.00w  
 INSIDE DIM'S.: 48.75h x 24.75w x 18.50d  
 (1) ADJUSTABLE SHELF

O.S.S #3

CLEAR OPENING: 60.25h x 28.50w  
 INSIDE DIM'S.: 61.75h x 32.00w x 18.50d  
 (2) ADJUSTABLE SHELVES  
 INSIDE/OUTSIDE ACCESS

THIS DRAWING IS FOR REPRESENTATIONAL PURPOSES ONLY. DETAILS ARE CONCEPTUAL AND ARE SUBJECT TO CHANGE DURING DESIGN AND CONSTRUCTION  
 DIMENSIONS ARE APPROXIMATE UNLESS NOTED OTHERWISE TO MEET A SPECIFIC CUSTOMER NEED.

MODEL YEAR 2025



STREETSIDE EXTERIOR VIEW  
 EXPRESS PLUS / FORD F450 CHASSIS

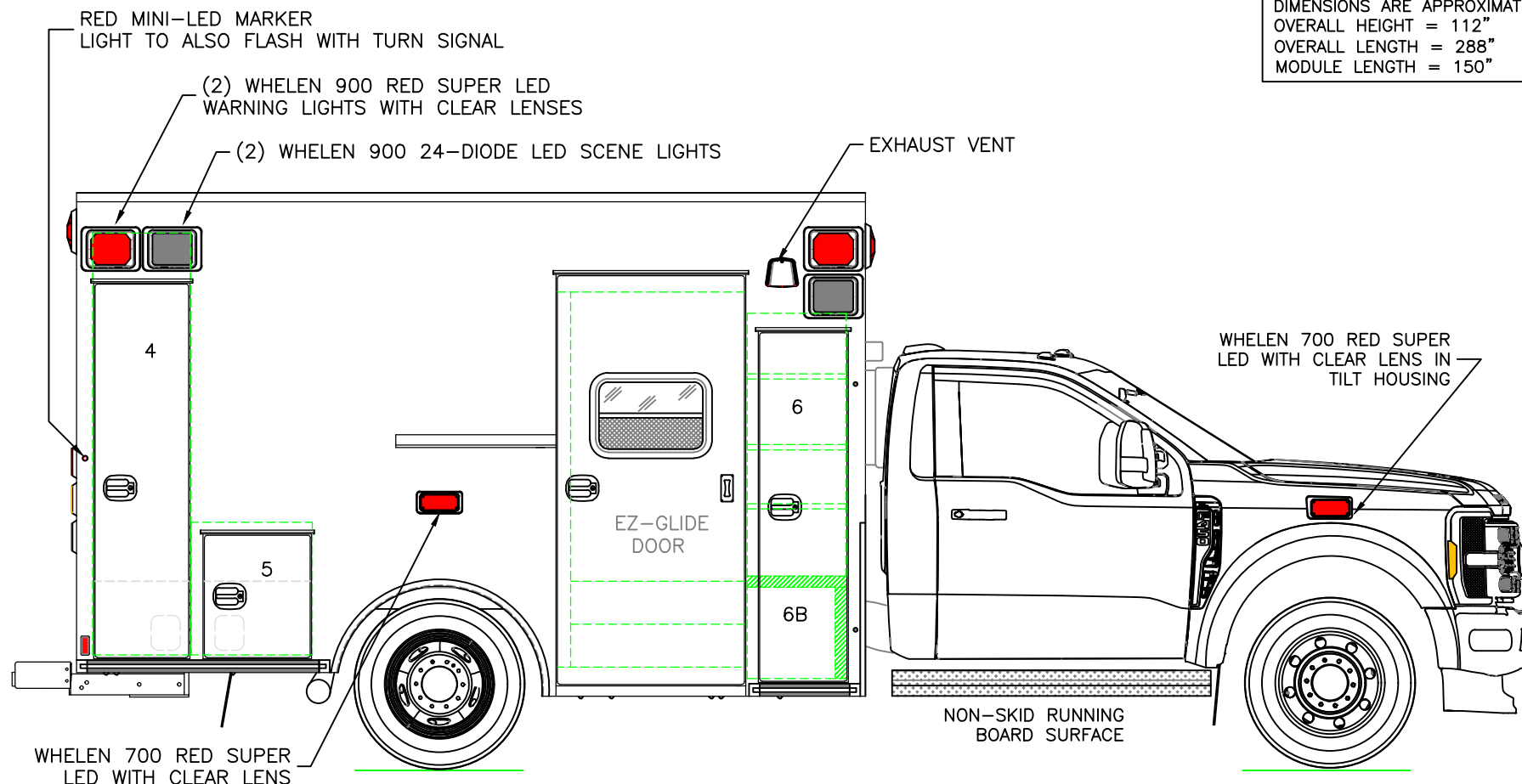
DATE:  
 2-21-24

DRAWING NO.

DWG. TKD  
 REV. NR

EXPRESSPLUS-3

DIMENSIONS ARE APPROXIMATE  
 OVERALL HEIGHT = 112"  
 OVERALL LENGTH = 288"  
 MODULE LENGTH = 150"



#### COMPARTMENT

##### O.S.S #4

CLEAR OPENING: 70.00h x 15.00w  
 INSIDE DIM'S.: 80.25h x 18.50w x 18.50d  
 BACKBOARD/SCOOP STORAGE

##### O.S.S #5

CLEAR OPENING: 22.25h x 17.00w  
 INSIDE DIM'S.: 25.25h x 23.00w x 18.50d  
 MISC. STORAGE COMPARTMENT

##### O.S.S #6

CLEAR OPENING: 65.25h x 13.50w  
 INSIDE DIM'S. 6A: SEE PARTITION INTERIOR VIEW  
 INSIDE/OUTSIDE STORAGE WITH (3) ADJUSTABLE SHELVES

INSIDE DIM'S. 6B: 17.25h x 16.75w x 16.75d

THIS DRAWING IS FOR REPRESENTATIONAL PURPOSES ONLY. DETAILS ARE CONCEPTUAL AND ARE SUBJECT TO CHANGE DURING DESIGN AND CONSTRUCTION  
 DIMENSIONS ARE APPROXIMATE UNLESS NOTED OTHERWISE TO MEET A SPECIFIC CUSTOMER NEED.

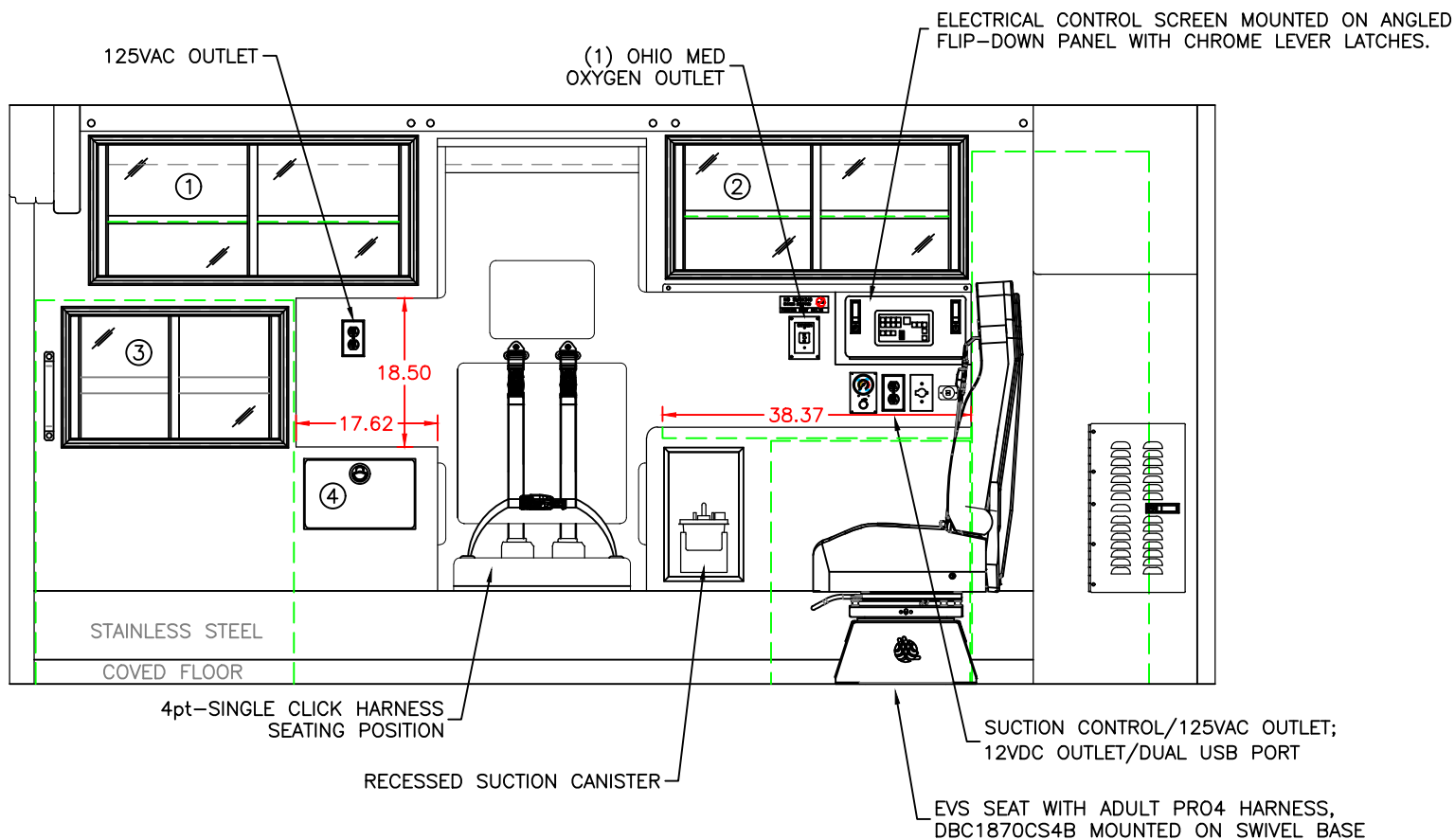
MODEL YEAR 2025



CURBSIDE EXTERIOR VIEW  
 EXPRESS PLUS / FORD F450 CHASSIS

DATE: 2-21-24  
 DWG. TKD  
 REV. NR

DRAWING NO.  
 EXPRESSPLUS-4



#### COMPARTMENT

#1 DOOR OPENING: 16.25h x 38.50w  
 INSIDE DIMS: 17.75h x 40.25w x 16.25d  
 (1) ADJUSTABLE SHELF  
 SLIDING POLYCARBONATE DOORS  
 TOTAL CABINET WEIGHT RATING = 25 lbs.

#2 DOOR OPENING: 15.50h x 35.25w  
 INSIDE DIMS: 17.00h x 36.75w x 16.25d  
 (1) ADJUSTABLE SHELF  
 SLIDING POLYCARBONATE DOORS  
 TOTAL CABINET WEIGHT RATING = 25 lbs.

#3 DOOR OPENING: 15.25h x 26.00w  
 INSIDE DIMS: OSS #3  
 INSIDE/OUTSIDE ACCESS  
 SLIDING POLYCARBONATE DOORS  
 TOTAL CABINET WEIGHT RATING = 25 lbs.

#4 PULL-OUT DRAWER  
 INSIDE DIMS: 7.50h x 11.75w x 15.75d  
 LOCKING STAINLESS STEEL FLUSH PULL LATCH  
 TOTAL DRAWER WEIGHT RATING = 10 lbs.

THIS DRAWING IS FOR REPRESENTATIONAL PURPOSES ONLY. DETAILS ARE CONCEPTUAL AND ARE SUBJECT TO CHANGE DURING DESIGN AND CONSTRUCTION  
 DIMENSIONS ARE APPROXIMATE UNLESS NOTED OTHERWISE TO MEET A SPECIFIC CUSTOMER NEED.

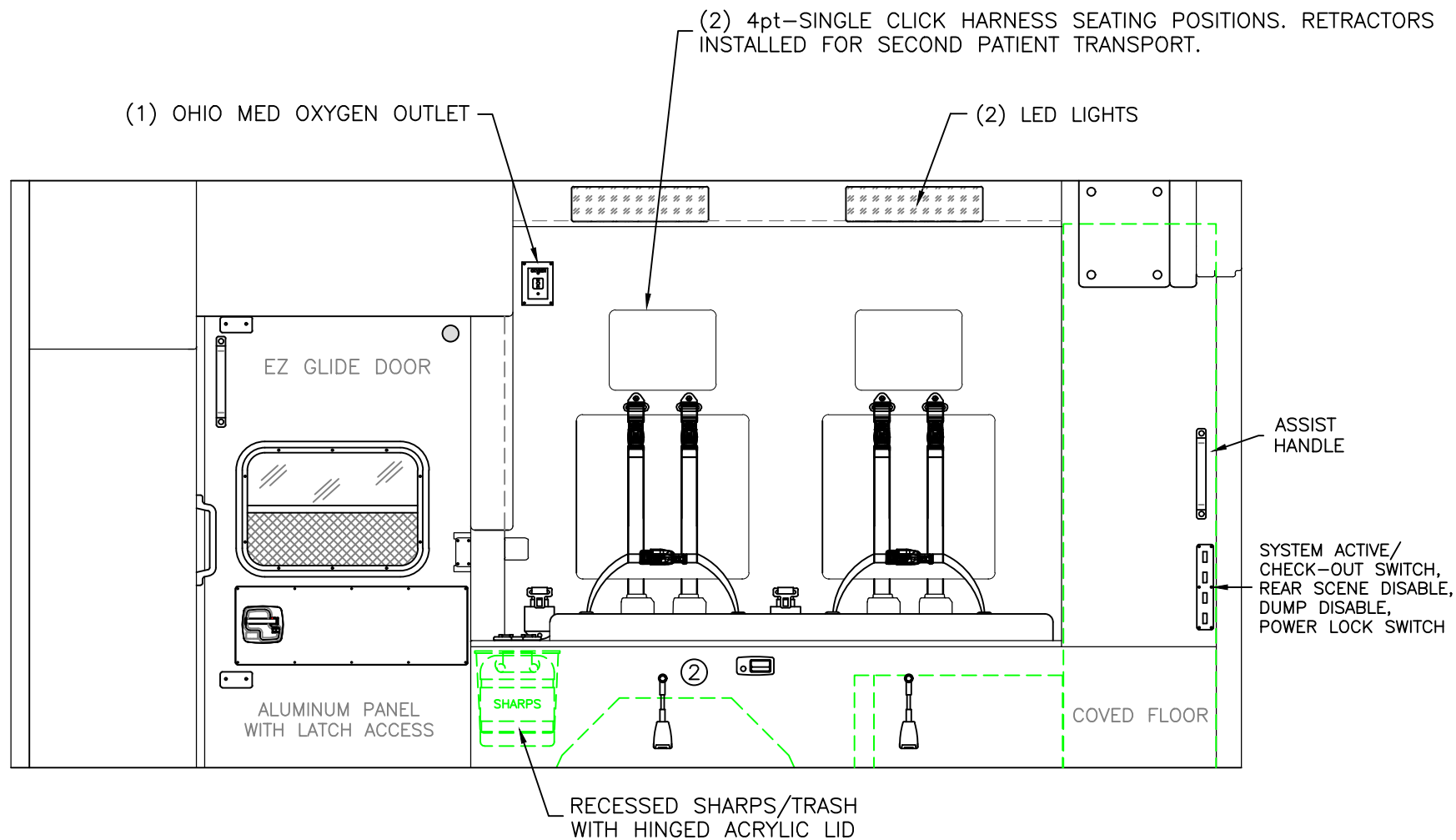
MODEL YEAR 2025



STREETSIDE INTERIOR VIEW  
 EXPRESS PLUS

DATE:  
2-21-24  
 DWG. TKD  
 REV. NR

DRAWING NO.  
EXPRESSPLUS-5



COMPARTMENT  
 #1 - CABINET NOT PART OF LAYOUT  
 #2 INSIDE DIM'S.: 14.50h x 46.00w x 18.75d

THIS DRAWING IS FOR REPRESENTATIONAL PURPOSES ONLY. DETAILS ARE CONCEPTUAL AND ARE SUBJECT TO CHANGE DURING DESIGN AND CONSTRUCTION  
 DIMENSIONS ARE APPROXIMATE UNLESS NOTED OTHERWISE TO MEET A SPECIFIC CUSTOMER NEED.

MODEL YEAR 2025

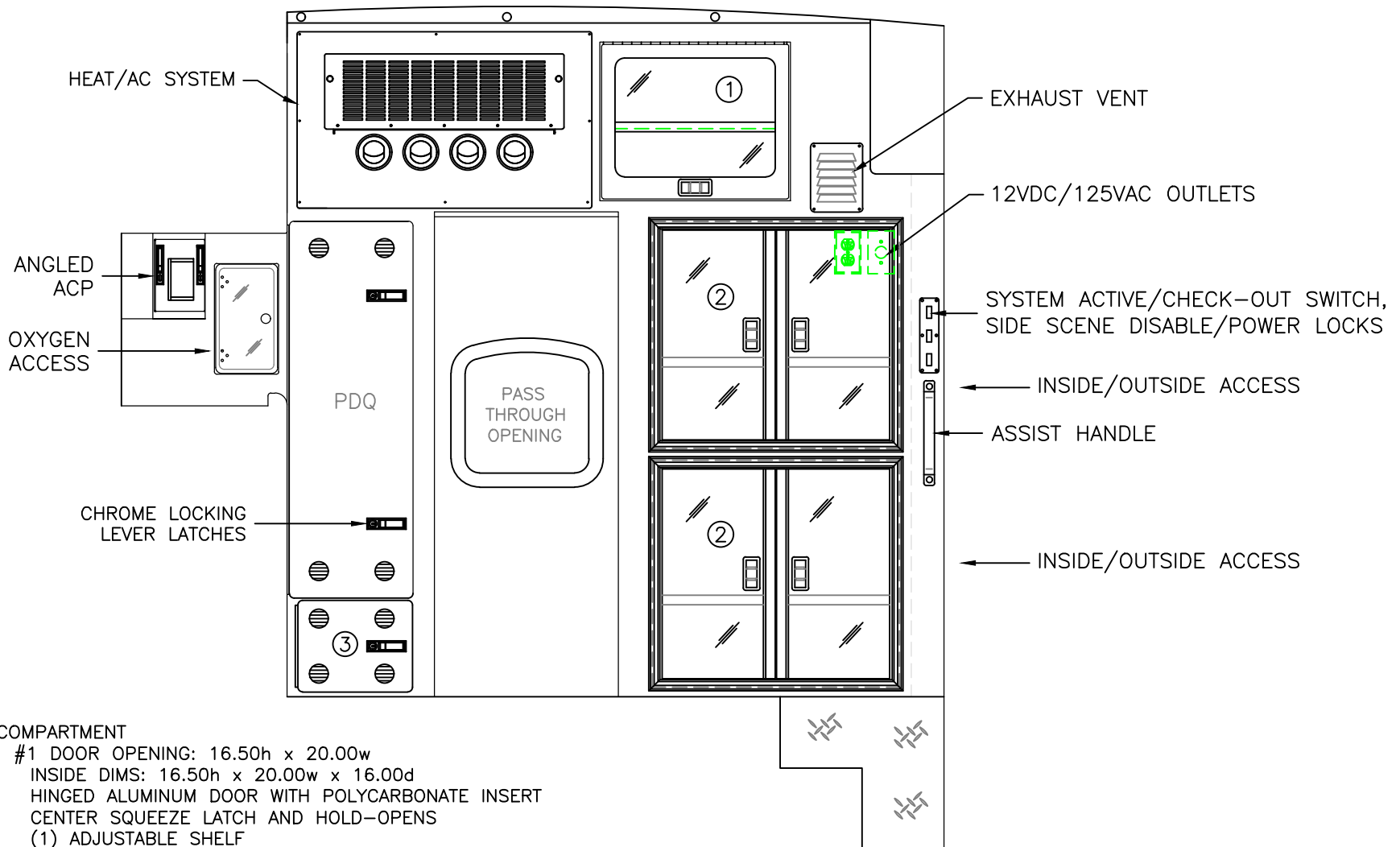


CURBSIDE INTERIOR VIEW  
 EXPRESS PLUS

DATE:  
2-22-24  
DWG. TKD

REV.  
NR

DRAWING NO.  
EXPRESSPLUS-6



#### COMPARTMENT

#1 DOOR OPENING: 16.50h x 20.00w  
 INSIDE DIMS: 16.50h x 20.00w x 16.00d  
 HINGED ALUMINUM DOOR WITH POLYCARBONATE INSERT  
 CENTER SQUEEZE LATCH AND HOLD-OPENS  
 (1) ADJUSTABLE SHELF  
 TOTAL CABINET WEIGHT RATING = 25 lbs.

#2 DOOR OPENINGS: 22.25h x 24.25w  
 INSIDE DIMS: 24.00h x 30.25w x 17.75d  
 HINGED POLYCARBONATE DOORS WITH FULL LENGTH  
 HANDLES AND CENTER SQUEEZE LATCHES  
 (1) ADJUSTABLE SHELF PER CABINET  
 TOTAL CABINET WEIGHT RATING = 60 lbs. EACH

#3 VENTED RADIO CABINET  
 INSIDE DIMS: 9.00h x 11.75w x 20.25d  
 HINGED ALUMINUM DOOR  
 CHROME LOCKING LEVER LATCH  
 TOTAL CABINET WEIGHT RATING = 20 lbs.

THIS DRAWING IS FOR REPRESENTATIONAL PURPOSES ONLY. DETAILS ARE CONCEPTUAL AND ARE SUBJECT TO CHANGE DURING DESIGN AND CONSTRUCTION  
 DIMENSIONS ARE APPROXIMATE UNLESS NOTED OTHERWISE TO MEET A SPECIFIC CUSTOMER NEED.

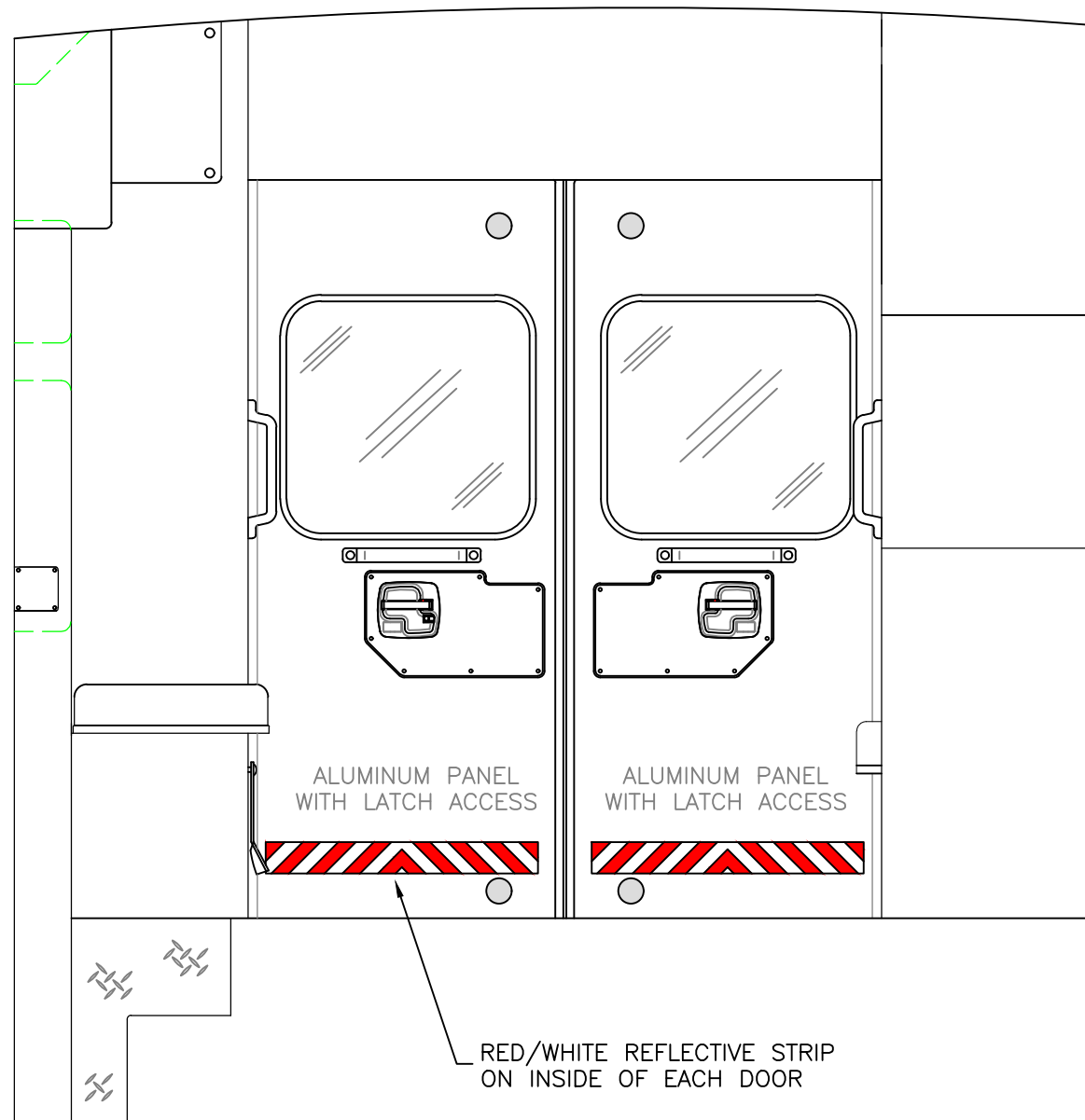
MODEL YEAR 2025



PARTITION INTERIOR VIEW  
 EXPRESS PLUS

DATE:  
 2-21-24  
 DWG. TKD  
 REV. NR

DRAWING NO.  
 EXPRESSPLUS-7



THIS DRAWING IS FOR REPRESENTATIONAL PURPOSES ONLY. DETAILS ARE CONCEPTUAL AND ARE SUBJECT TO CHANGE DURING DESIGN AND CONSTRUCTION  
 DIMENSIONS ARE APPROXIMATE UNLESS NOTED OTHERWISE TO MEET A SPECIFIC CUSTOMER NEED.

MODEL YEAR 2025

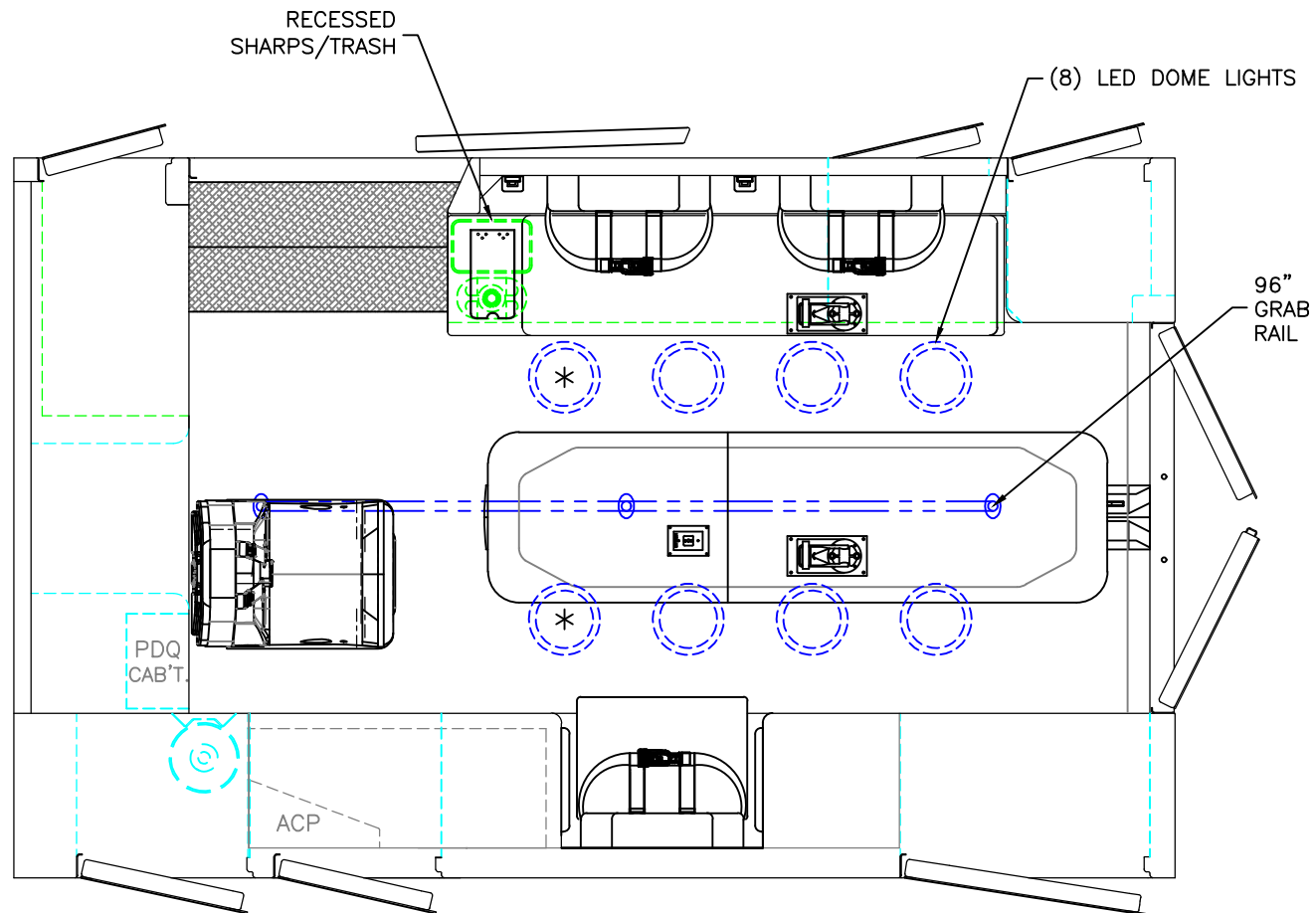


REAR INTERIOR VIEW  
 EXPRESS PLUS

DATE:  
 11-20-23  
 DWG. TKD NR

DRAWING NO.  
 EXPRESSPLUS-8





 = (1) CEILING OXYGEN OUTLET

 = (2) RECESSED CEILING IV HANGER LOCATIONS

\* (2) ANTENNA BASES LOCATED OUTBOARD OF DOME LIGHTS WITH COAX SERVICE LOOP

86" FERNO STAT-TRAC CENTER MOUNT COT HARDWARE

MODULE WIDTH = 93"  
MODULE LENGTH = 150"  
MODULE HEAD ROOM = 72"

THIS DRAWING IS FOR REPRESENTATIONAL PURPOSES ONLY. DETAILS ARE CONCEPTUAL AND ARE SUBJECT TO CHANGE DURING DESIGN AND CONSTRUCTION. DIMENSIONS ARE APPROXIMATE UNLESS NOTED OTHERWISE TO MEET A SPECIFIC CUSTOMER NEED.

MODEL YEAR 2025



FLOOR INTERIOR VIEW  
EXPRESS PLUS

DATE:  
2-21-24  
DWG.  
TKD

DRAWING NO.  
REV.  
NR  
EXPRESSPLUS-9