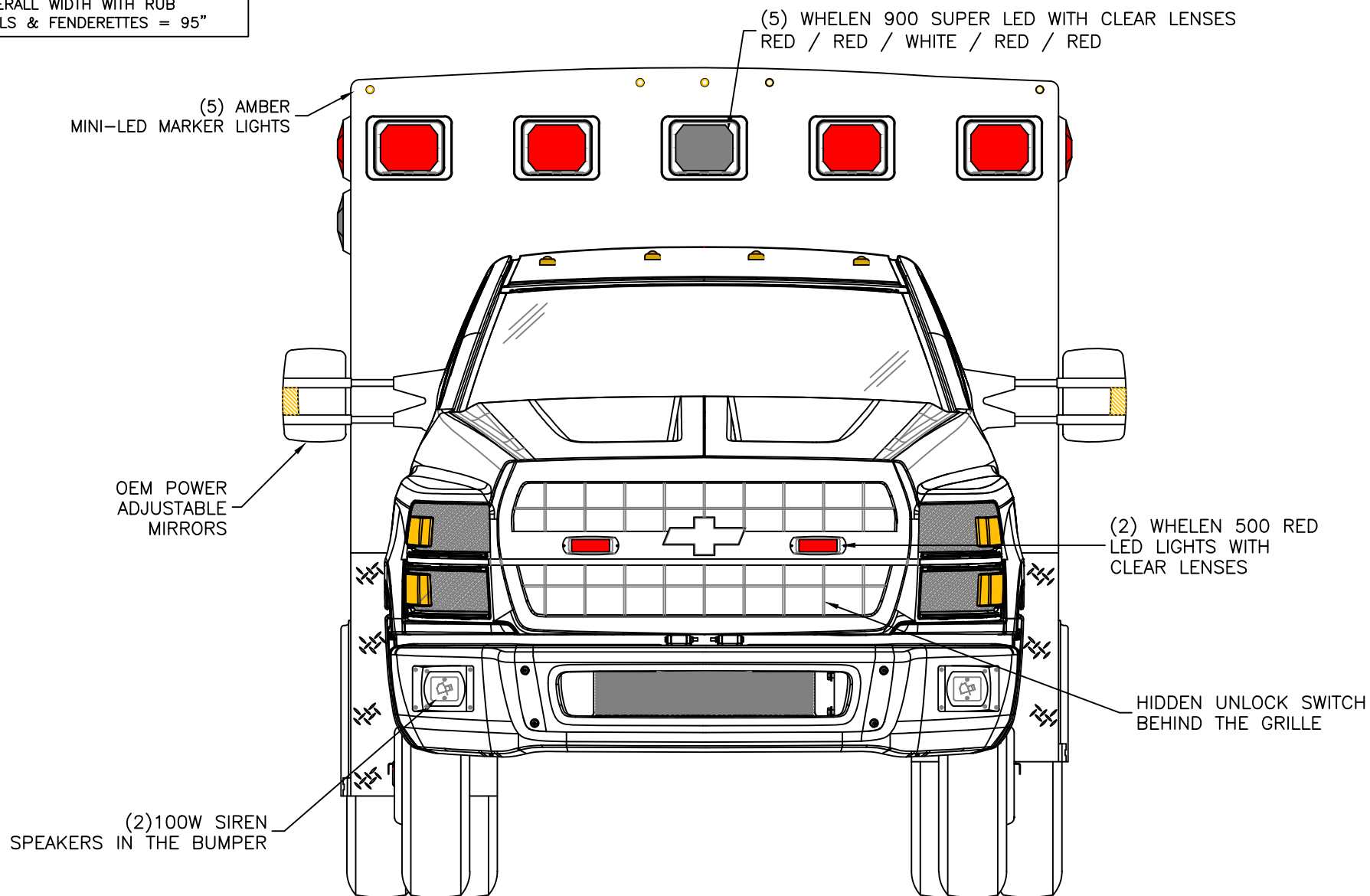


DIMENSIONS ARE APPROXIMATE
OVERALL HEIGHT = 112"
OVERALL WIDTH WITH RUB
RAILS & FENDERETTES = 95"



THIS DRAWING IS FOR REPRESENTATIONAL PURPOSES ONLY. DETAILS ARE CONCEPTUAL AND ARE SUBJECT TO CHANGE DURING DESIGN AND CONSTRUCTION
DIMENSIONS ARE APPROXIMATE UNLESS NOTED OTHERWISE TO MEET A SPECIFIC CUSTOMER NEED.

MODEL YEAR 2025



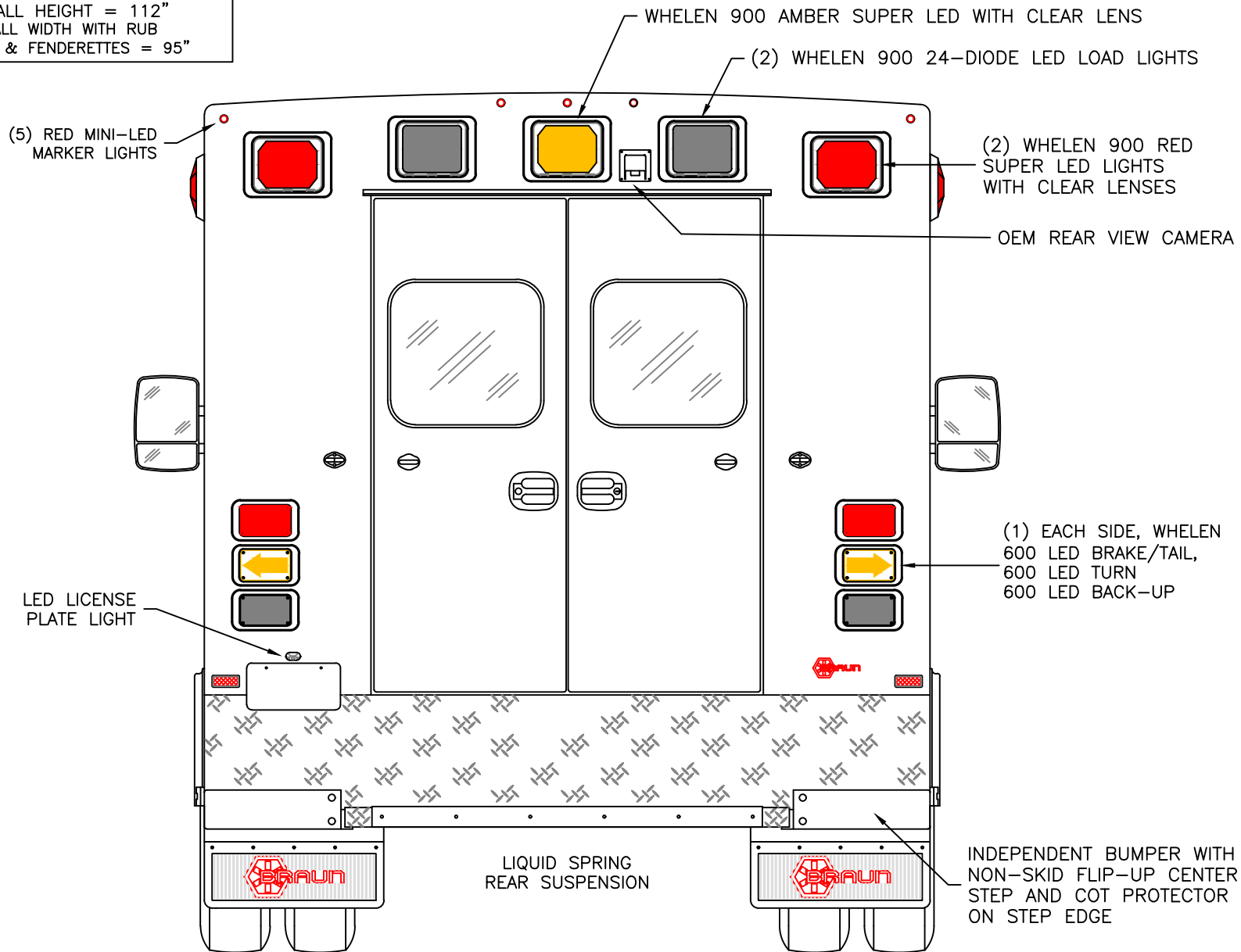
FRONT EXTERIOR VIEW
EXPRESS PLUS / CHEVY 4500 CHASSIS

DATE: 2-21-24
DWG. TKD REV. NR
DATE:

DRAWING NO.
EXPRESSPLUS-1

APPROVAL SIGNATURE:

DIMENSIONS ARE APPROXIMATE
 OVERALL HEIGHT = 112"
 OVERALL WIDTH WITH RUB
 RAILS & FENDERETTES = 95"



THIS DRAWING IS FOR REPRESENTATIONAL PURPOSES ONLY. DETAILS ARE CONCEPTUAL AND ARE SUBJECT TO CHANGE DURING DESIGN AND CONSTRUCTION
 DIMENSIONS ARE APPROXIMATE UNLESS NOTED OTHERWISE TO MEET A SPECIFIC CUSTOMER NEED.

MODEL YEAR 2025



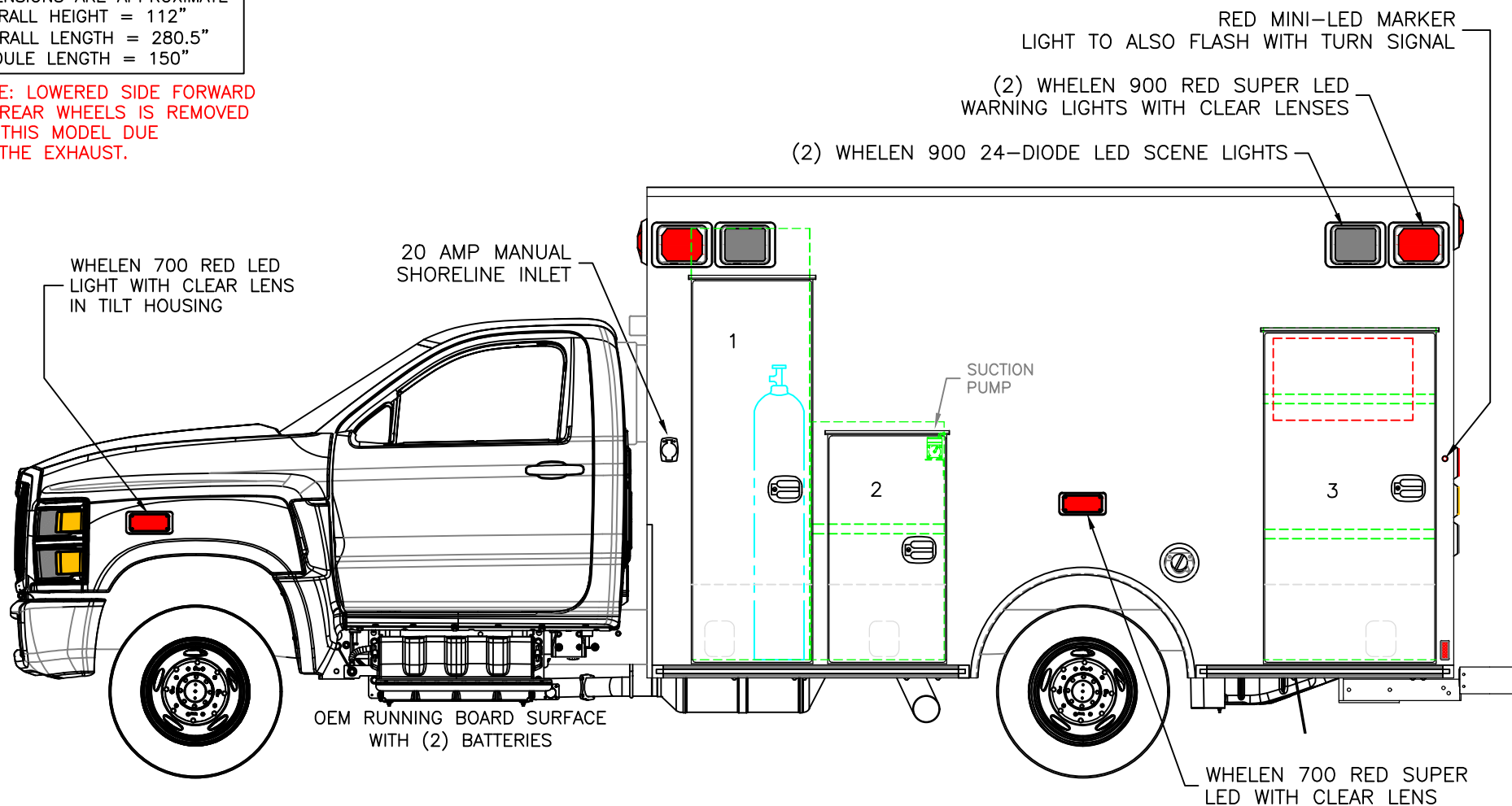
REAR EXTERIOR VIEW
 EXPRESS PLUS

DATE: 2-21-24
 DWG. TKD REV. NR

DRAWING NO. EXPRESSPLUS-2

DIMENSIONS ARE APPROXIMATE
 OVERALL HEIGHT = 112"
 OVERALL LENGTH = 280.5"
 MODULE LENGTH = 150"

NOTE: LOWERED SIDE FORWARD
 OF REAR WHEELS IS REMOVED
 ON THIS MODEL DUE
 TO THE EXHAUST.



COMPARTMENT
 O.S.S #1

CLEAR OPENING: 70.00h x 18.50w
 INSIDE DIM'S.: 80.25h x 22.00w x 20.25d
 OXYGEN STORAGE COMPARTMENT

O.S.S #2

CLEAR OPENING: 41.00h x 19.00w
 INSIDE DIM'S.: 44.25h x 24.75w x 20.25d
 (1) ADJUSTABLE SHELF

O.S.S #3

CLEAR OPENING: 60.25h x 28.50w
 INSIDE DIM'S.: 61.75h x 32.00w x 20.25d
 (2) ADJUSTABLE SHELVES
 INSIDE/OUTSIDE ACCESS

THIS DRAWING IS FOR REPRESENTATIONAL PURPOSES ONLY. DETAILS ARE CONCEPTUAL AND ARE SUBJECT TO CHANGE DURING DESIGN AND CONSTRUCTION
 DIMENSIONS ARE APPROXIMATE UNLESS NOTED OTHERWISE TO MEET A SPECIFIC CUSTOMER NEED.

MODEL YEAR 2025

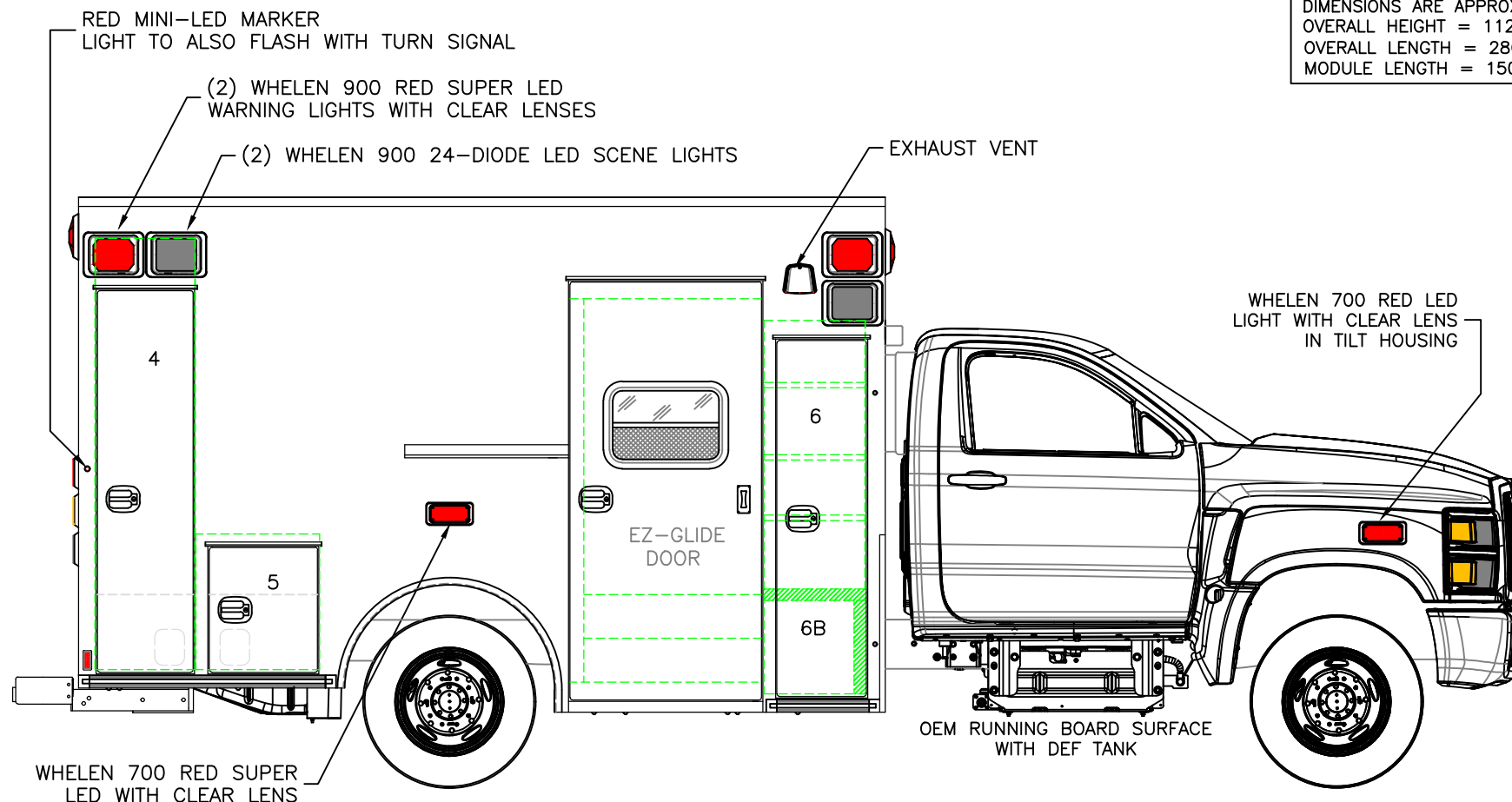


STREETSIDE EXTERIOR VIEW
 EXPRESS PLUS / CHEVY 4500 CHASSIS

DATE:
 2-21-24
 DWG. TKD
 REV. NR

DRAWING NO.
 EXPRESSPLUS-3

DIMENSIONS ARE APPROXIMATE
 OVERALL HEIGHT = 112"
 OVERALL LENGTH = 280.5"
 MODULE LENGTH = 150"



COMPARTMENT

O.S.S #4

CLEAR OPENING: 70.00h x 15.00w
 INSIDE DIM'S.: 80.25h x 18.50w x 20.25d
 BACKBOARD/SCOOP STORAGE

O.S.S #5

CLEAR OPENING: 22.25h x 17.00w
 INSIDE DIM'S.: 25.25h x 23.00w x 20.25d
 MISC. STORAGE COMPARTMENT

O.S.S #6

CLEAR OPENING: 65.25h x 13.50w
 INSIDE DIM'S. 6A: SEE PARTITION INTERIOR VIEW
 INSIDE/OUTSIDE STORAGE WITH (3) ADJUSTABLE SHELVES

INSIDE DIM'S. 6B: 17.25h x 16.75w x 18.50d

THIS DRAWING IS FOR REPRESENTATIONAL PURPOSES ONLY. DETAILS ARE CONCEPTUAL AND ARE SUBJECT TO CHANGE DURING DESIGN AND CONSTRUCTION
 DIMENSIONS ARE APPROXIMATE UNLESS NOTED OTHERWISE TO MEET A SPECIFIC CUSTOMER NEED.

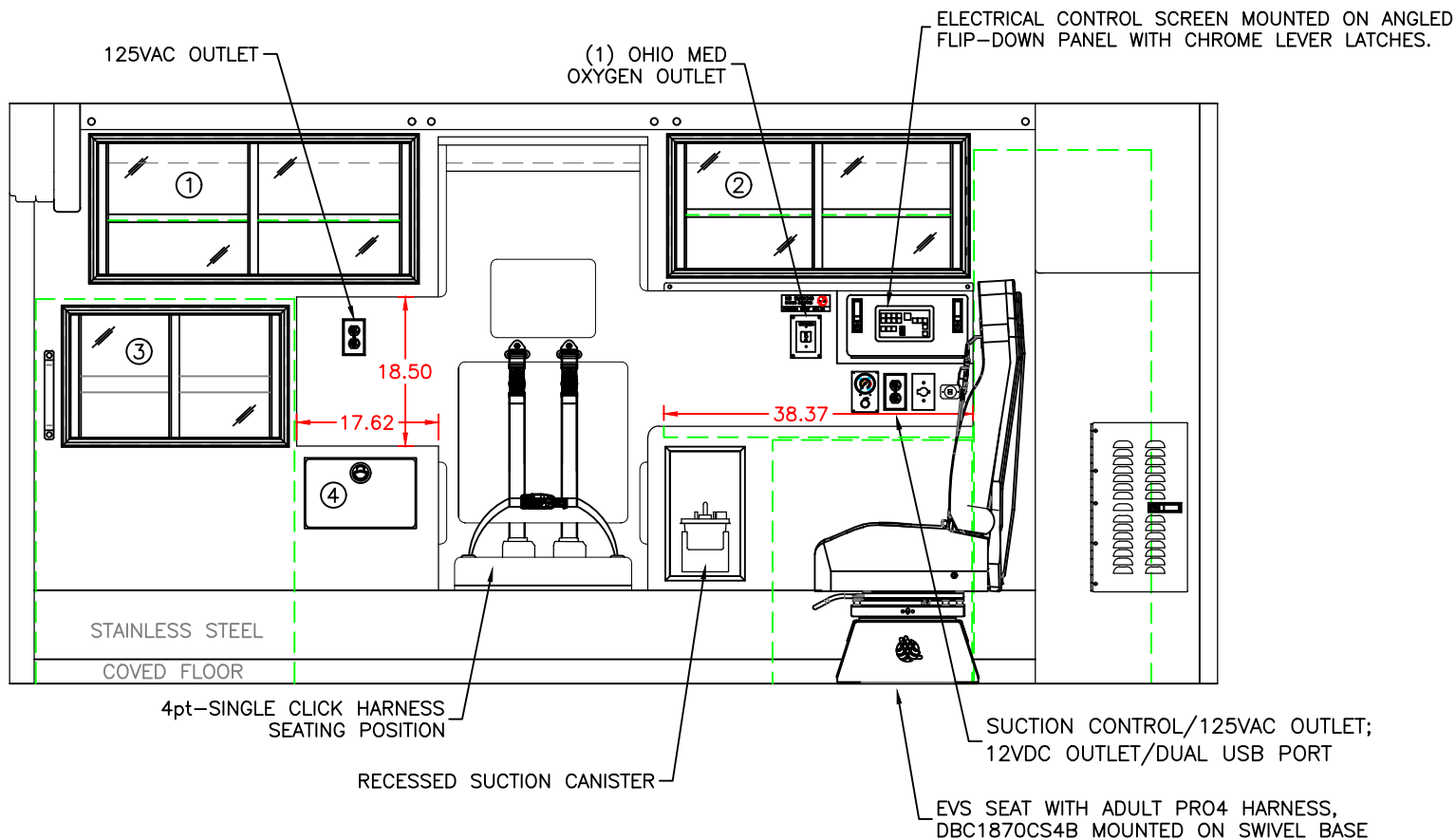
MODEL YEAR 2025



CURBSIDE EXTERIOR VIEW
 EXPRESS PLUS / CHEVY 4500 CHASSIS

DATE: 2-21-24
 DWG. TKD
 REV. NR

DRAWING NO.
 EXPRESSPLUS-4



COMPARTMENT

#1 DOOR OPENING: 16.25h x 38.50w
 INSIDE DIMS: 17.75h x 40.25w x 18.00d
 (1) ADJUSTABLE SHELF
 SLIDING POLYCARBONATE DOORS
 TOTAL CABINET WEIGHT RATING = 25 lbs.

#2 DOOR OPENING: 15.50h x 35.25w
 INSIDE DIMS: 17.00h x 36.75w x 18.00d
 (1) ADJUSTABLE SHELF
 SLIDING POLYCARBONATE DOORS
 TOTAL CABINET WEIGHT RATING = 25 lbs.

#3 DOOR OPENING: 15.25h x 26.00w
 INSIDE DIMS: OSS #3
 INSIDE/OUTSIDE ACCESS
 SLIDING POLYCARBONATE DOORS
 TOTAL CABINET WEIGHT RATING = 25 lbs.

#4 PULL-OUT DRAWER
 INSIDE DIMS: 7.50h x 11.75w x 15.75d
 LOCKING STAINLESS STEEL FLUSH PULL LATCH
 TOTAL DRAWER WEIGHT RATING = 10 lbs.

THIS DRAWING IS FOR REPRESENTATIONAL PURPOSES ONLY. DETAILS ARE CONCEPTUAL AND ARE SUBJECT TO CHANGE DURING DESIGN AND CONSTRUCTION
 DIMENSIONS ARE APPROXIMATE UNLESS NOTED OTHERWISE TO MEET A SPECIFIC CUSTOMER NEED.

MODEL YEAR 2025



STREETSIDE INTERIOR VIEW
 EXPRESS PLUS

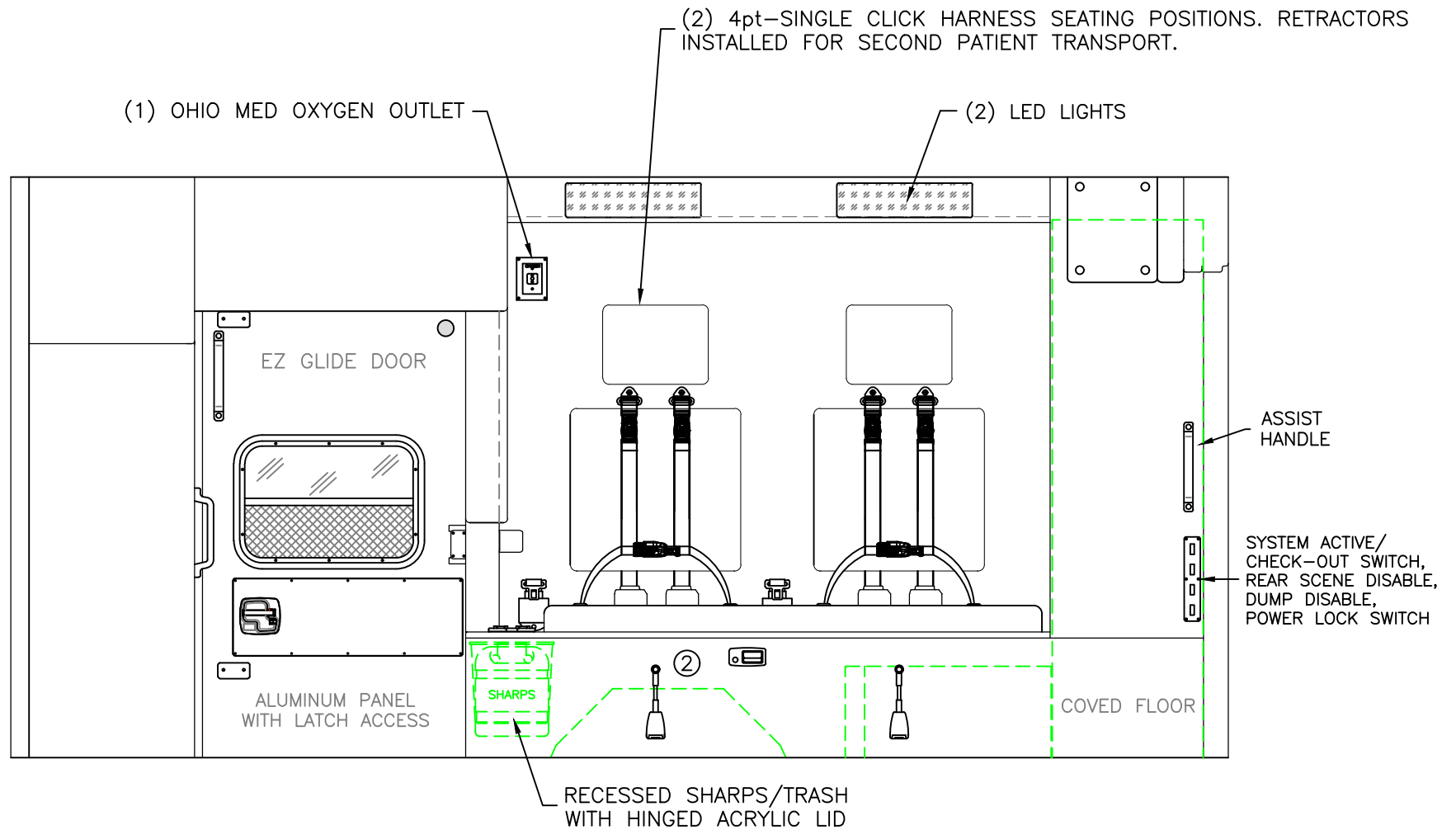
DATE:
2-2-24

DWG.
TKD

REV.
NR

DRAWING NO.

EXPRESSPLUS-5



COMPARTMENT
 #1 - CABINET NOT PART OF LAYOUT
 #2 INSIDE DIM'S.: 14.50h x 46.00w x 18.75d

THIS DRAWING IS FOR REPRESENTATIONAL PURPOSES ONLY. DETAILS ARE CONCEPTUAL AND ARE SUBJECT TO CHANGE DURING DESIGN AND CONSTRUCTION
 DIMENSIONS ARE APPROXIMATE UNLESS NOTED OTHERWISE TO MEET A SPECIFIC CUSTOMER NEED.

MODEL YEAR 2025

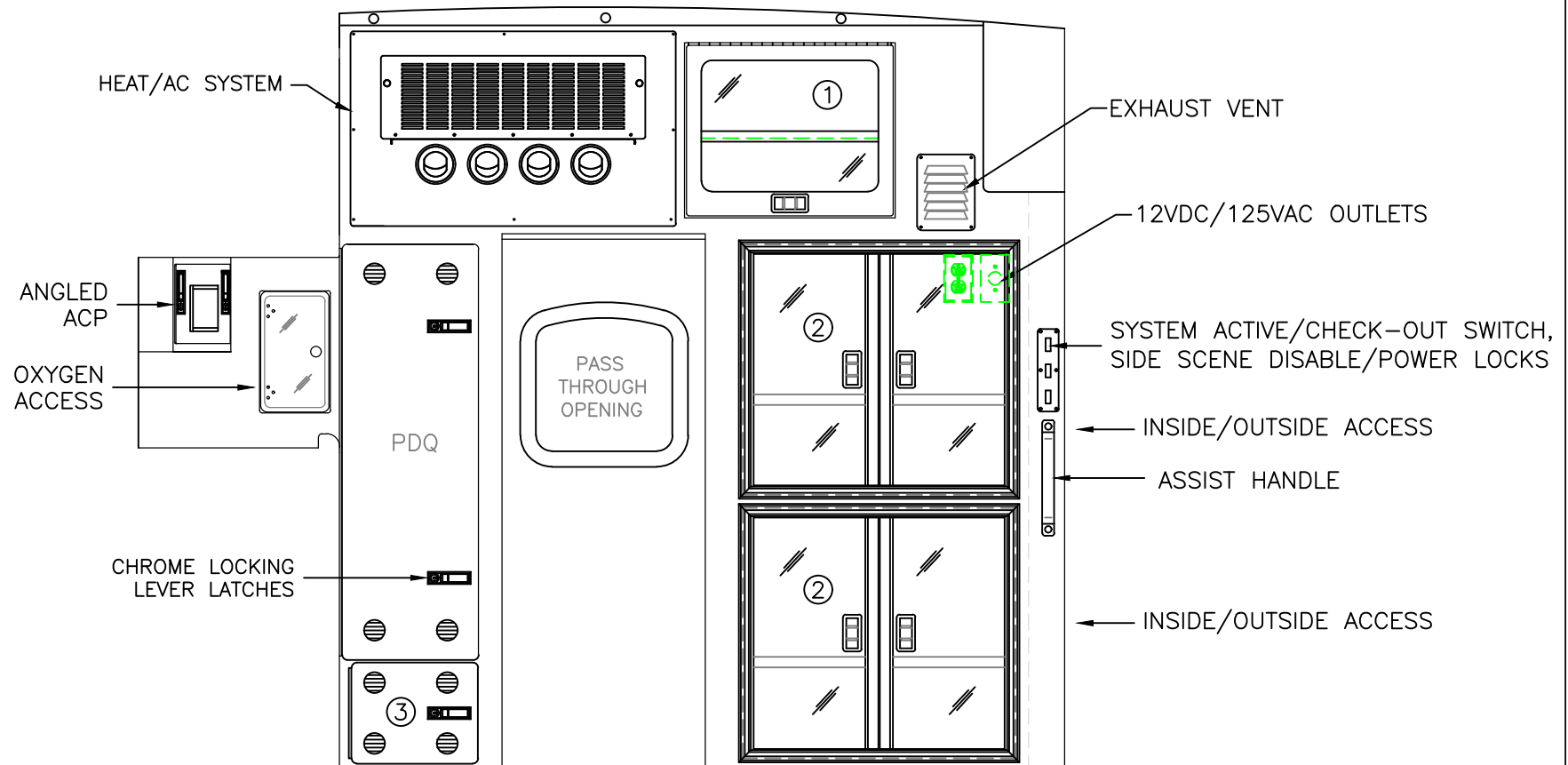


CURBSIDE INTERIOR VIEW
 EXPRESS PLUS

DATE:
2-21-24
DWG. TKD

REV.
NR

DRAWING NO.
EXPRESSPLUS-6



COMPARTMENT

#1 DOOR OPENING: 16.50h x 20.00w
 INSIDE DIMS: 16.50h x 20.00w x 16.00d
 HINGED ALUMINUM DOOR WITH POLYCARBONATE INSERT
 CENTER SQUEEZE LATCH AND HOLD-OPENS
 (1) ADJUSTABLE SHELF
 TOTAL CABINET WEIGHT RATING = 25 lbs.

#2 DOOR OPENINGS: 22.25h x 24.25w
 INSIDE DIMS: 24.00h x 30.25w x 17.75d
 HINGED POLYCARBONATE DOORS WITH FULL LENGTH
 HANDLES AND CENTER SQUEEZE LATCHES
 (1) ADJUSTABLE SHELF PER CABINET
 TOTAL CABINET WEIGHT RATING = 60 lbs. EACH

#3 VENTED RADIO CABINET
 INSIDE DIMS: 9.00h x 11.75w x 20.25d
 HINGED ALUMINUM DOOR
 CHROME LOCKING LEVER LATCH
 TOTAL CABINET WEIGHT RATING = 20 lbs.

THIS DRAWING IS FOR REPRESENTATIONAL PURPOSES ONLY. DETAILS ARE CONCEPTUAL AND ARE SUBJECT TO CHANGE DURING DESIGN AND CONSTRUCTION
 DIMENSIONS ARE APPROXIMATE UNLESS NOTED OTHERWISE TO MEET A SPECIFIC CUSTOMER NEED.

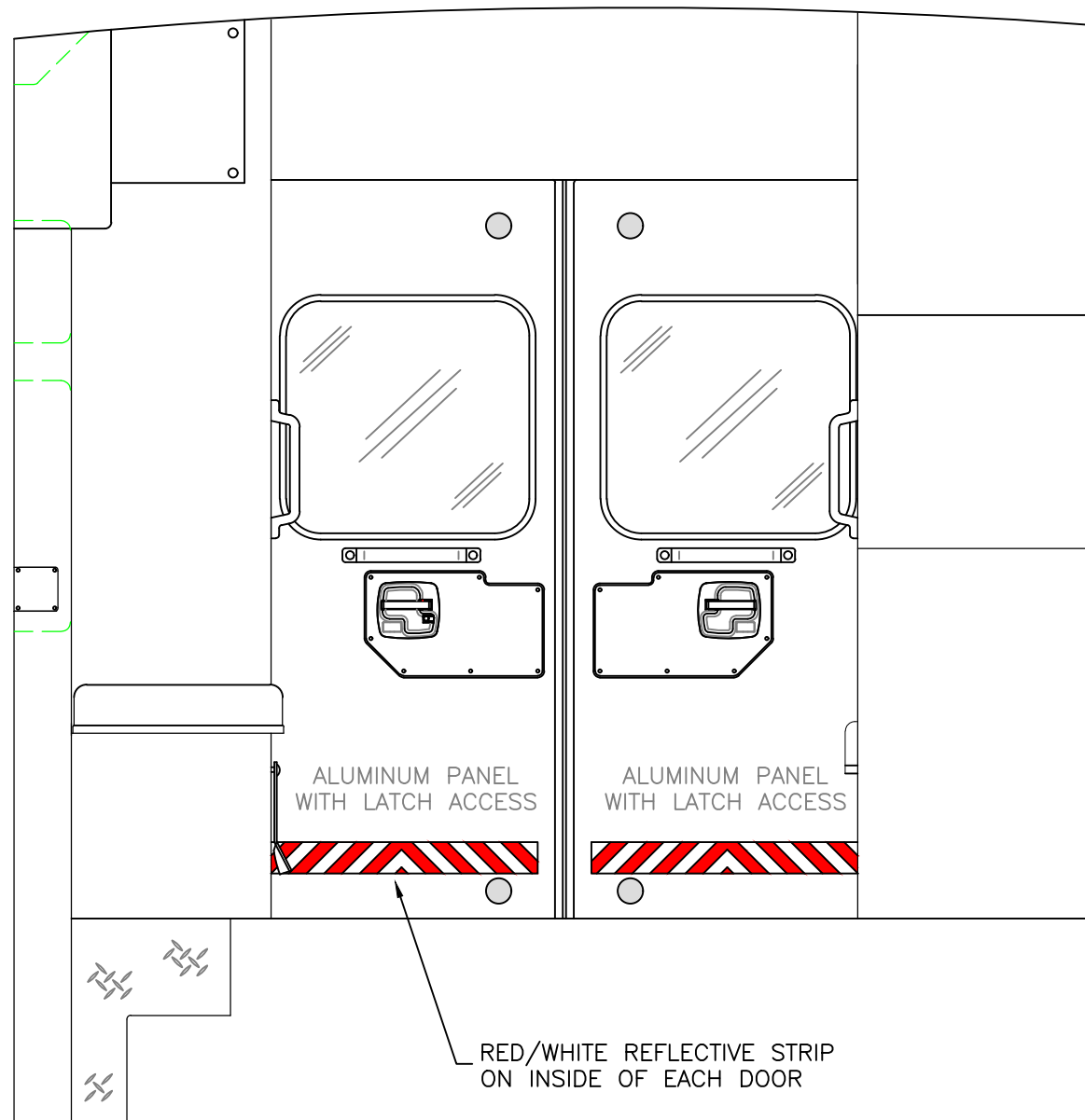
MODEL YEAR 2025



PARTITION INTERIOR VIEW
 EXPRESS PLUS CHEVY 4500

DATE:
 2-21-24
 DWG. TKD
 REV. NR

DRAWING NO.
 EXPRESSPLUS-7



THIS DRAWING IS FOR REPRESENTATIONAL PURPOSES ONLY. DETAILS ARE CONCEPTUAL AND ARE SUBJECT TO CHANGE DURING DESIGN AND CONSTRUCTION
 DIMENSIONS ARE APPROXIMATE UNLESS NOTED OTHERWISE TO MEET A SPECIFIC CUSTOMER NEED.

MODEL YEAR 2025



REAR INTERIOR VIEW
 EXPRESS PLUS

DATE:
 11-20-23

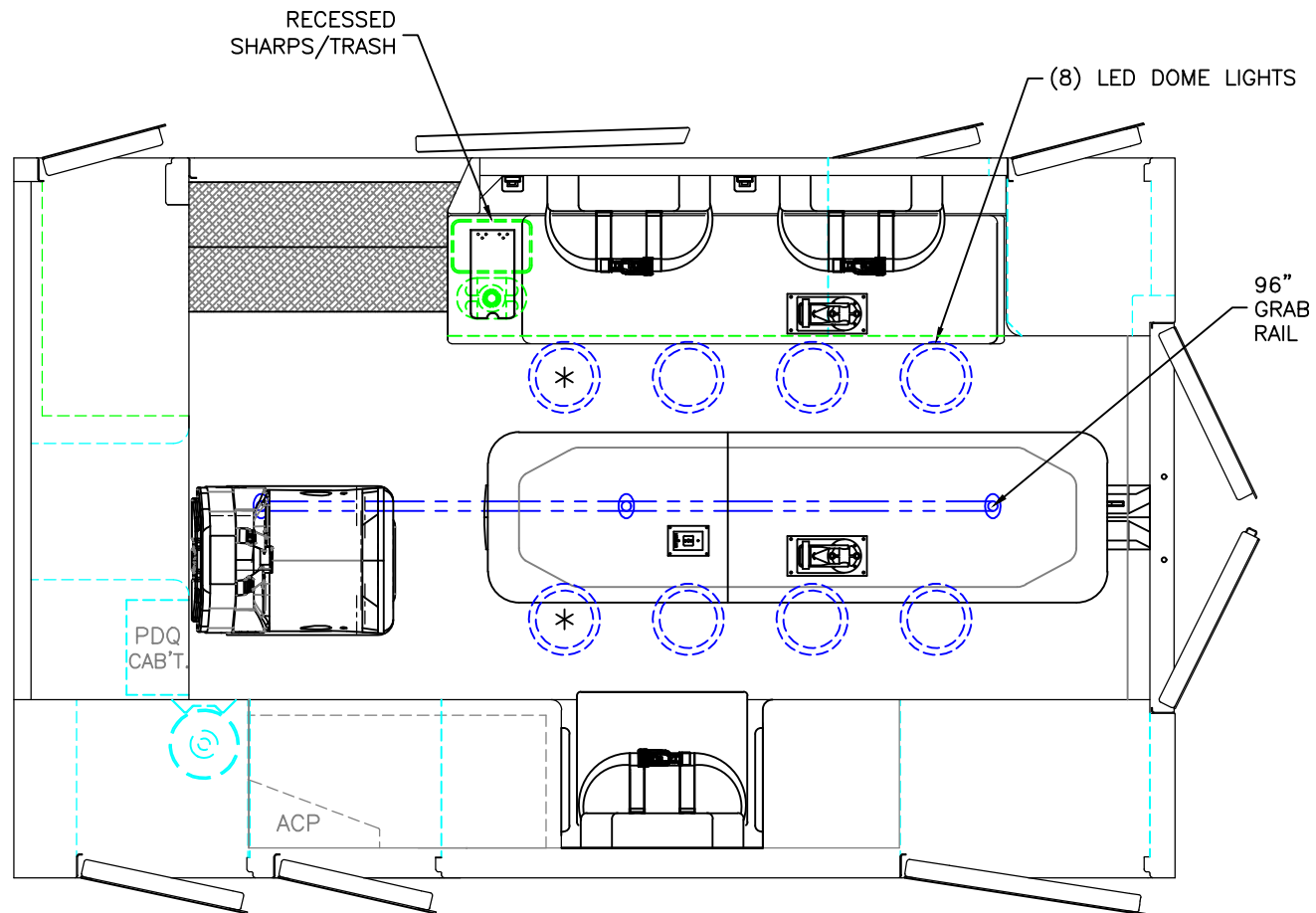
DRAWING NO.

DWG.

REV.

TKD NR

EXPRESSPLUS-8



 = (1) CEILING OXYGEN OUTLET

 = (2) RECESSED CEILING IV HANGER LOCATIONS

* (2) ANTENNA BASES LOCATED OUTBOARD OF DOME LIGHTS WITH COAX SERVICE LOOP

86" FERNO STAT-TRAC CENTER MOUNT COT HARDWARE

MODULE WIDTH = 93"
MODULE LENGTH = 150"
MODULE HEAD ROOM = 72"

THIS DRAWING IS FOR REPRESENTATIONAL PURPOSES ONLY. DETAILS ARE CONCEPTUAL AND ARE SUBJECT TO CHANGE DURING DESIGN AND CONSTRUCTION. DIMENSIONS ARE APPROXIMATE UNLESS NOTED OTHERWISE TO MEET A SPECIFIC CUSTOMER NEED.

MODEL YEAR 2025



FLOOR INTERIOR VIEW
EXPRESS PLUS

DATE:
2-22-24
DWG.
TKD

DRAWING NO.
REV.
NR
EXPRESSPLUS-9