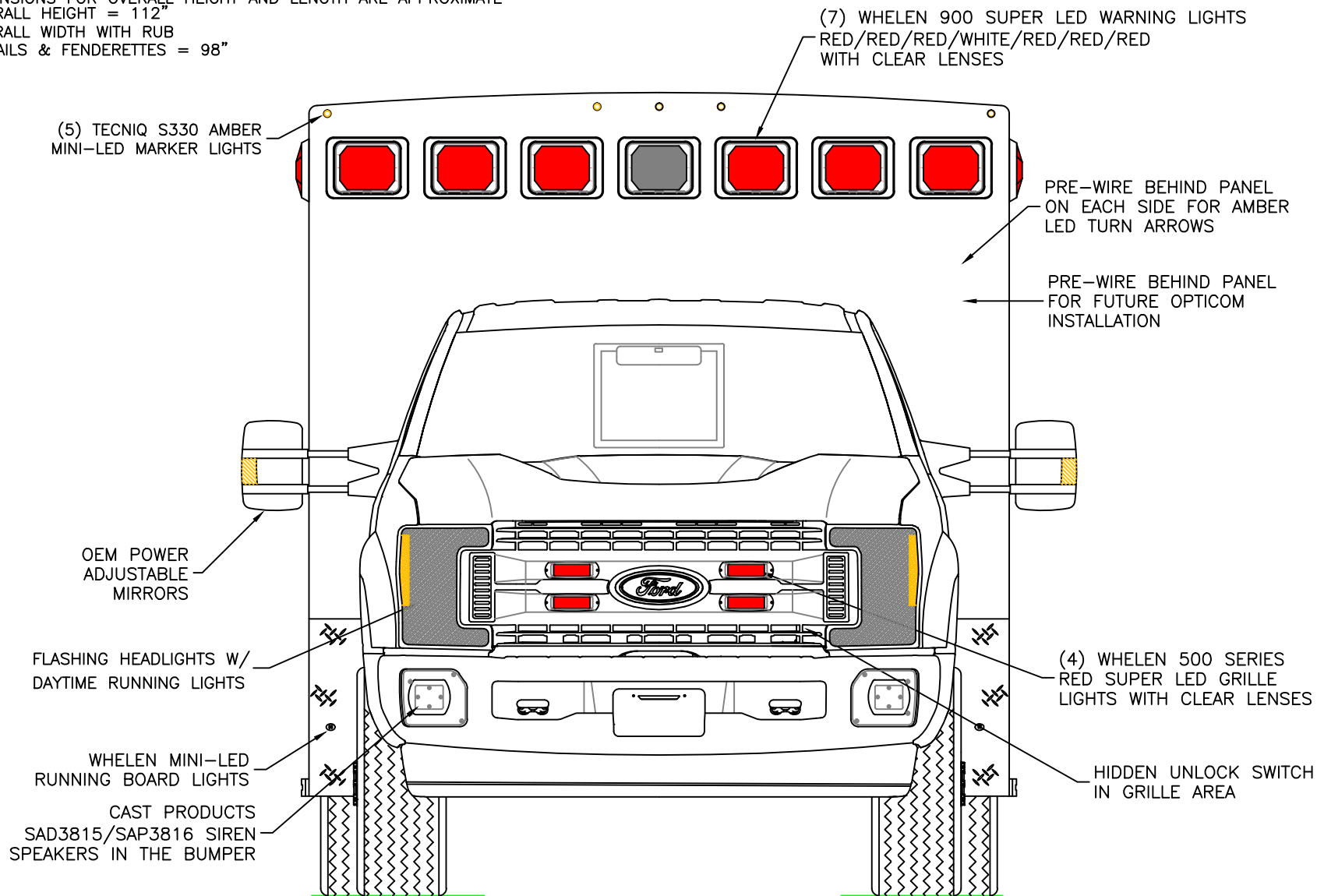


DIMENSIONS FOR OVERALL HEIGHT AND LENGTH ARE APPROXIMATE
 OVERALL HEIGHT = 112"
 OVERALL WIDTH WITH RUB
 RAILS & FENDERETTES = 98"



CUSTOMER APPROVAL: _____ DATE: _____

THIS DRAWING IS FOR REPRESENTATIONAL PURPOSES ONLY. DETAILS ARE CONCEPTUAL AND ARE SUBJECT TO CHANGE DURING DESIGN AND CONSTRUCTION
 DIMENSIONS ARE APPROXIMATE UNLESS NOTED OTHERWISE TO MEET A SPECIFIC CUSTOMER NEED.

PENN CARE
 DEMO



2018 FRONT EXTERIOR VIEW
 CHIEF XL-I/FORD F-450 CHASSIS

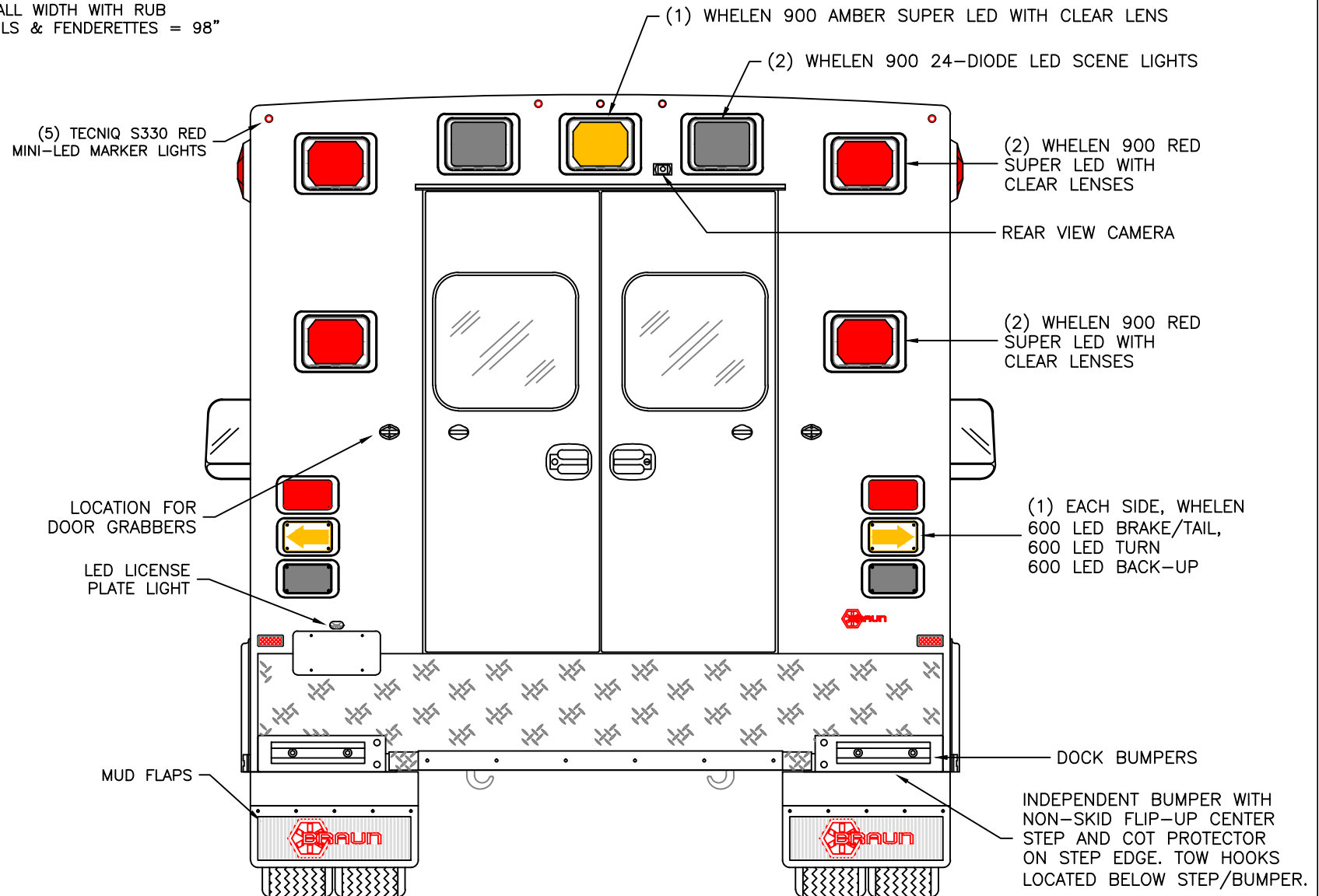
1:17

DATE:	11-1-17
DWG.	REV.
AAB	NR
DATE:	

DRAWING NO.
 PCDEMO-1

APPROVAL SIGNATURE:

DIMENSIONS FOR OVERALL HEIGHT AND LENGTH ARE APPROXIMATE
 OVERALL HEIGHT = 112"
 OVERALL WIDTH WITH RUB
 RAILS & FENDERETTES = 98"



CUSTOMER APPROVAL: _____ DATE: _____

THIS DRAWING IS FOR REPRESENTATIONAL PURPOSES ONLY. DETAILS ARE CONCEPTUAL AND ARE SUBJECT TO CHANGE DURING DESIGN AND CONSTRUCTION
 DIMENSIONS ARE APPROXIMATE UNLESS NOTED OTHERWISE TO MEET A SPECIFIC CUSTOMER NEED.

PENN CARE
 DEMO



2018 REAR EXTERIOR VIEW
 CHIEF XL-I/FORD F-450 CHASSIS

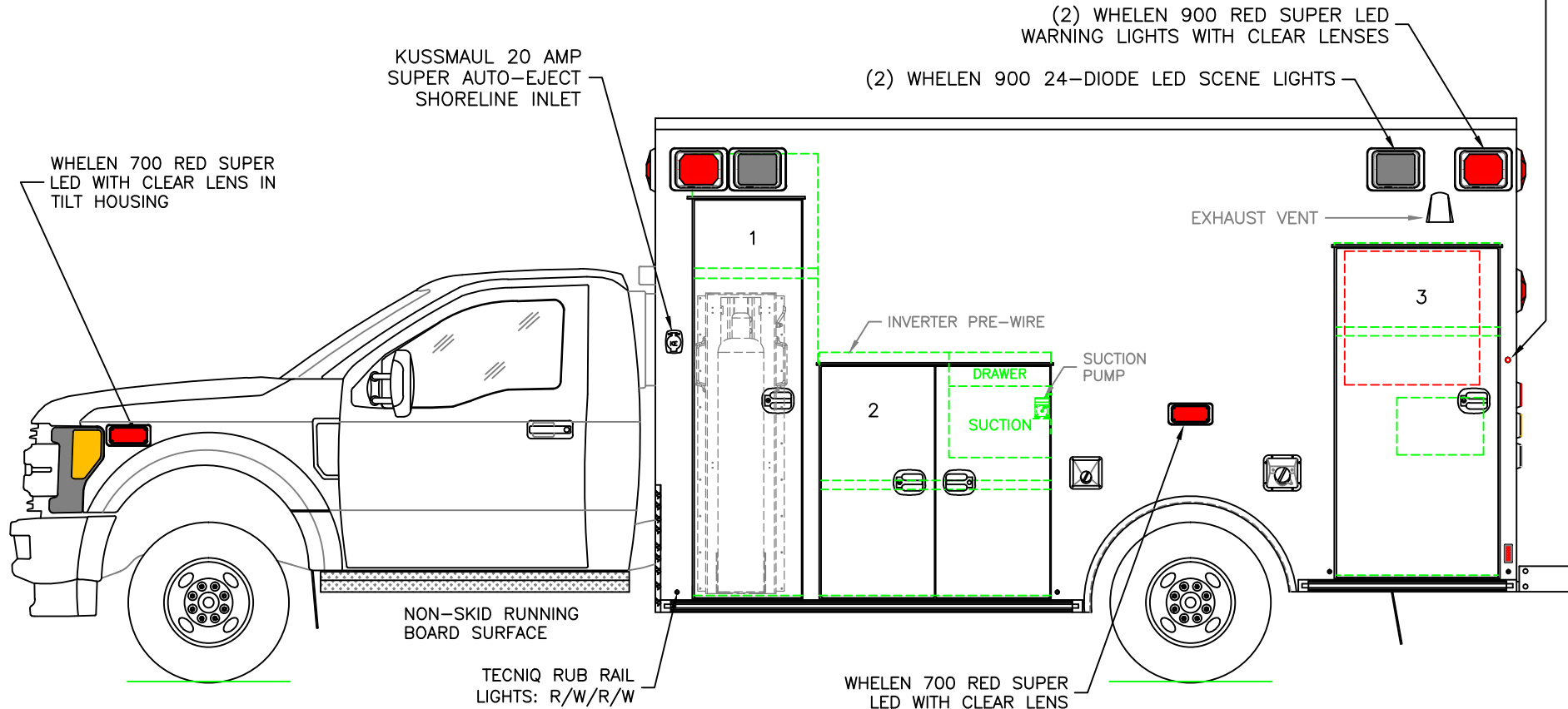
1:16

DATE:
 11-1-17
 DWG. AAB
 REV. NR

DRAWING NO.
 PCDEMO-2

DIMENSIONS FOR OVERALL HEIGHT AND LENGTH ARE APPROXIMATE
 OVERALL HEIGHT = 112"
 OVERALL LENGTH = 307"
 MODULE LENGTH = 169"

TECNIQ S330 RED MINI-LED MARKER
 LIGHT TO ALSO FLASH WITH TURN SIGNAL



COMPARTMENT

O.S.S #1

CLEAR OPENING: 77.00h x 18.25w
 INSIDE DIM'S.: 86.75h x 24.50w x 20.75d
 "EZ-02 LIFT" OXYGEN SYSTEM ON THE DOOR
 (1) ADJUSTABLE SHELF ABOVE OXYGEN

O.S.S #2

CLEAR OPENING: 44.25h x 39.50w
 INSIDE DIM'S.: 47.75h x 45.50w x 20.75d
 (1) ADJUSTABLE SHELF

O.S.S #3

CLEAR OPENING: 63.50h x 28.75w
 INSIDE DIM'S.: 65.25h x 32.50w x 20.75d
 INSIDE/OUTSIDE ACCESS
 (1) ADJUSTABLE SHELF
 DOOR REINFORCED FOR POSSIBLE POCKET
 ON THE DOOR FOR STAIR CHAIR

CUSTOMER APPROVAL: _____ DATE: _____

THIS DRAWING IS FOR REPRESENTATIONAL PURPOSES ONLY. DETAILS ARE CONCEPTUAL AND ARE SUBJECT TO CHANGE DURING DESIGN AND CONSTRUCTION
 DIMENSIONS ARE APPROXIMATE UNLESS NOTED OTHERWISE TO MEET A SPECIFIC CUSTOMER NEED.

PENN CARE
 DEMO



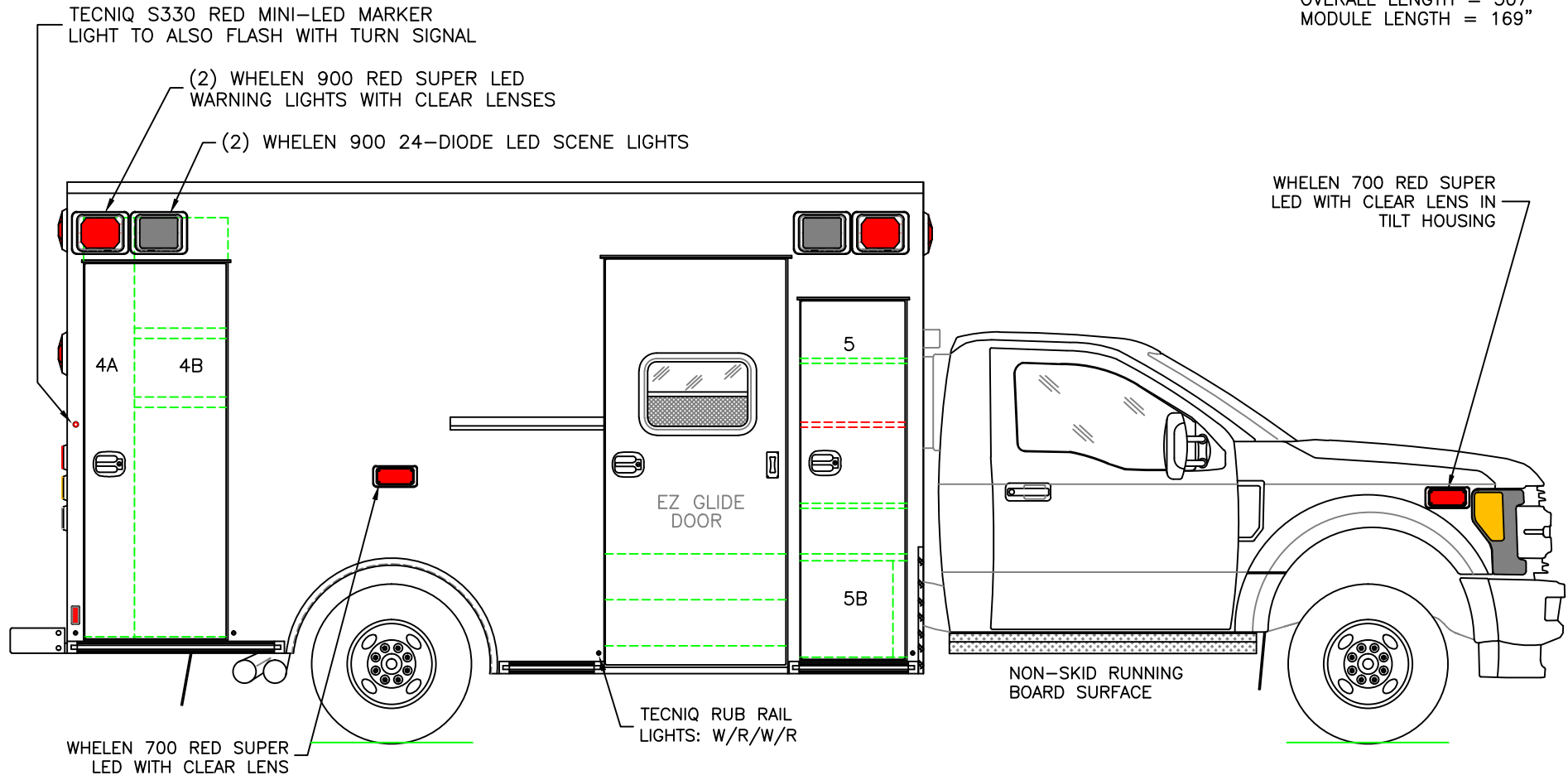
2018 STREETSIDE EXTERIOR VIEW
 CHIEF XL-I/FORD F-450 CHASSIS

1:30

DATE:
11-1-17
 DWG.
AAB
 REV.
NR

DRAWING NO.
PCDEMO-3

DIMENSIONS FOR OVERALL HEIGHT AND LENGTH ARE APPROXIMATE
 OVERALL HEIGHT = 112"
 OVERALL LENGTH = 307"
 MODULE LENGTH = 169"



COMPARTMENT
 O.S.S #4

CLEAR OPENING: 73.00h x 24.75w
 INSIDE DIM'S. 4A: 82.75h x 10.00w x 20.75d
 BACKBOARD/SCOOP STORAGE

INSIDE DIM'S. 4B: 82.75h x 18.50w x 20.75d
 (2) ADJUSTABLE SHELVES WITH INSIDE/OUTSIDE ACCESS

O.S.S #5

CLEAR OPENING: 69.50h x 17.50w
 INSIDE DIM'S. 5A: SEE PARTITION INTERIOR VIEW
 INSIDE/OUTSIDE STORAGE WITH (2) ADJUSTABLE SHELVES

INSIDE DIM'S. 5B: 19.00h x 20.25w x 18.00d

CUSTOMER APPROVAL: _____ DATE: _____

THIS DRAWING IS FOR REPRESENTATIONAL PURPOSES ONLY. DETAILS ARE CONCEPTUAL AND ARE SUBJECT TO CHANGE DURING DESIGN AND CONSTRUCTION
 DIMENSIONS ARE APPROXIMATE UNLESS NOTED OTHERWISE TO MEET A SPECIFIC CUSTOMER NEED.

PENN CARE
 DEMO

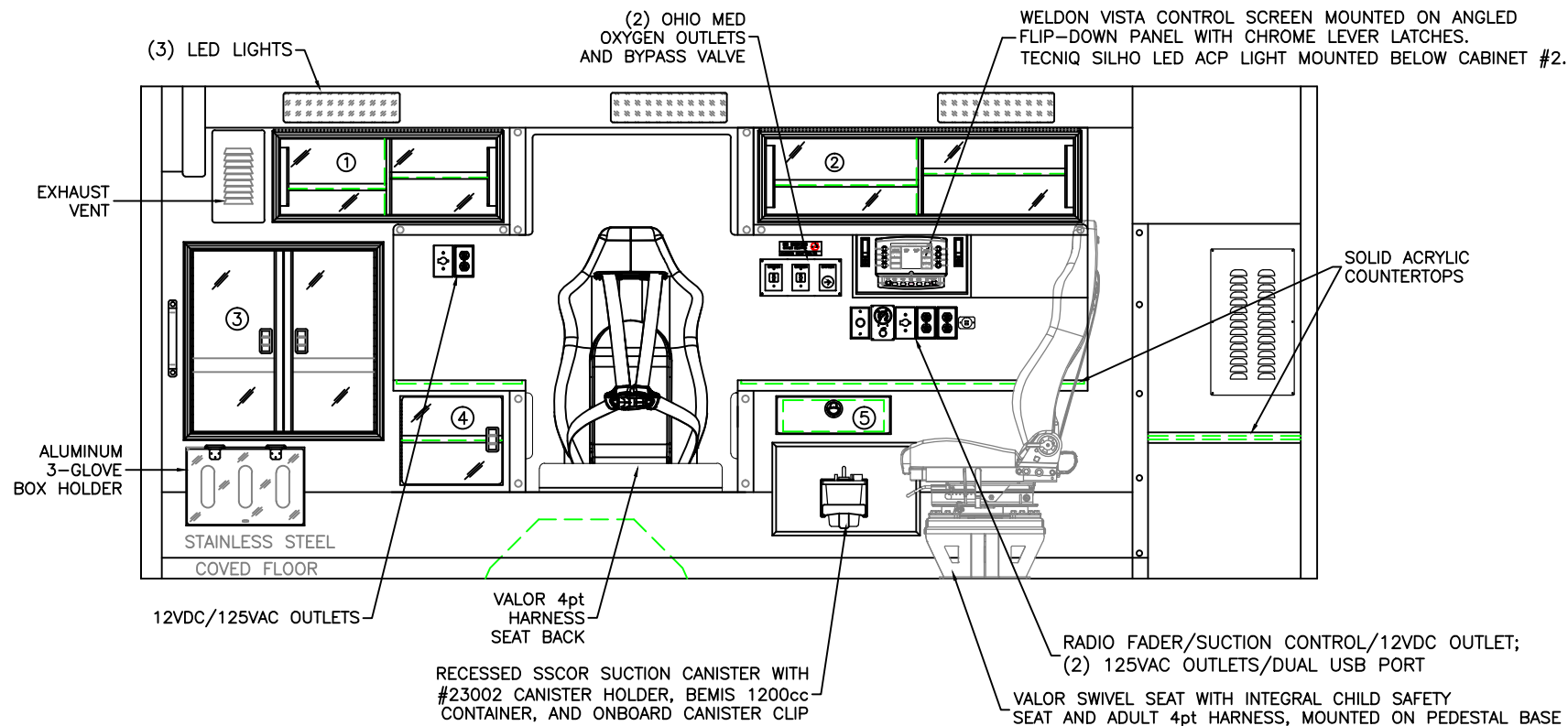


2018 CURBSIDE EXTERIOR VIEW
 CHIEF XL-I/FORD F-450 CHASSIS

1:30

DATE: 11-1-17	DWG. AAB	REV. NR
------------------	-------------	------------

DRAWING NO.
 PCDEMO-4



#1 DOOR OPENING: 10.75h x 31.00w
 INSIDE DIMS: 13.25h x 33.00w x 17.25d
 (1) ADJ SHELF EACH SIDE OF CENTER DIVIDER
 SLIDING POLYCARBONATE DOORS
 LIFT-UP RESTOCKING DOOR FRAME.
 TOTAL CABINET WEIGHT RATING = 25 lbs.

#2 DOOR OPENING: 10.75h x 44.00w
 INSIDE DIMS: 13.25h x 46.00w x 17.25d
 (1) ADJUSTABLE SHELF
 SLIDING POLYCARBONATE DOORS
 LIFT-UP RESTOCKING DOOR FRAME
 TOTAL CABINET WEIGHT RATING = 25 lbs.

#3 DOOR OPENING: 26.50h x 26.75w
 INSIDE DIMS: O.S.S. #3
 HINGED POLYCARBONATE DOORS WITH FULL LENGTH HANDLES
 CENTER SQUEEZE LATCHES
 TOTAL CABINET WEIGHT RATING = 40 lbs.

#4 DOOR OPENING: 12.75h x 14.75w
 INSIDE DIMS: 12.75h x 14.75w x 16.25d
 (1) ADJUSTABLE SHELF
 HINGED POLYCARBONATE DOOR
 CENTER SQUEEZE LATCH
 TOTAL CABINET WEIGHT RATING = 10 lbs.

#5 PULL-OUT DRAWER WITH HINGED ACRYLIC WRITING SURFACE
 INSIDE DIMS: 4.50h x 14.50w x 13.25d
 LOCKING STAINLESS STEEL FLUSH PULL LATCH
 TOTAL DRAWER WEIGHT RATING = 10 lbs.

INVENTORY CONTROL SYSTEM
 CABINETS TO BE ALUMINUM

CUSTOMER APPROVAL: _____ DATE: _____

THIS DRAWING IS FOR REPRESENTATIONAL PURPOSES ONLY. DETAILS ARE CONCEPTUAL AND ARE SUBJECT TO CHANGE DURING DESIGN AND CONSTRUCTION
 DIMENSIONS ARE APPROXIMATE UNLESS NOTED OTHERWISE TO MEET A SPECIFIC CUSTOMER NEED.

PENN CARE
 DEMO

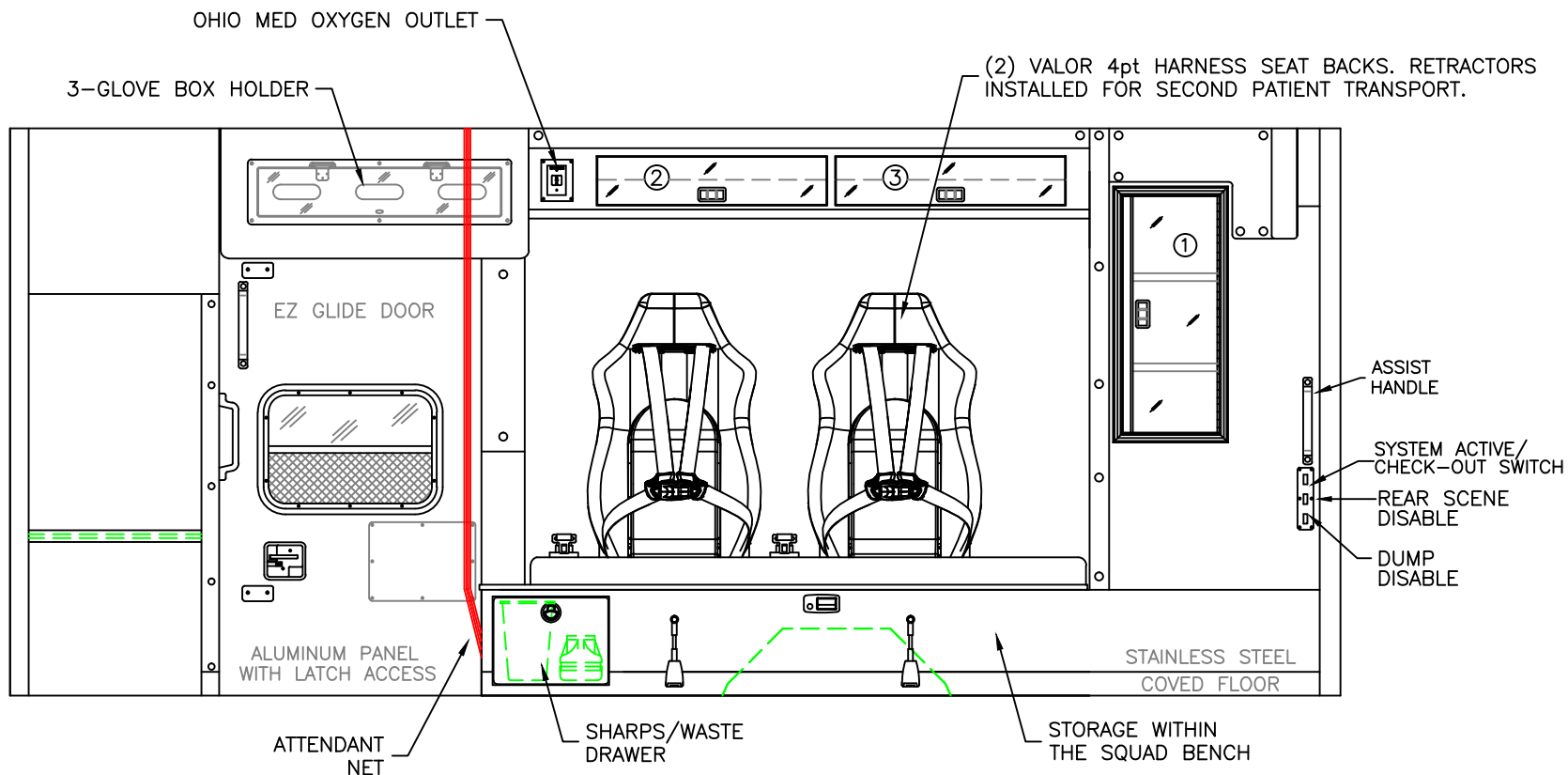


2018 STREETSIDE INTERIOR VIEW
 CHIEF XL-I

1:22

DATE:	11-1-17
DWG.	AAB
REV.	NR

DRAWING NO.	PCDEMO-5
-------------	----------



#1 DOOR OPENING: 30.00h x 12.25w
 INSIDE DIMS: OSS #4B
 HINGED POLYCARBONATE DOOR WITH FULL LENGTH HANDLE
 CENTER SQUEEZE LATCH
 INSIDE/OUTSIDE ACCESS
 TOTAL CABINET WEIGHT RATING = 15 lbs.

#2/#3 DOOR OPENING: 6.25h x 29.25w
 INSIDE DIMS: 6.25h x 29.25w x 10.25d
 HINGED POLYCARBONATE DOORS
 CENTER SQUEEZE LATCHES
 43" MINIMUM HEADROOM BELOW THE CABINET
 TOTAL CABINET WEIGHT RATING = 10 lbs. EACH

INVENTORY CONTROL SYSTEM
 CABINETS TO BE ALUMINUM

CUSTOMER APPROVAL: _____ DATE: _____

THIS DRAWING IS FOR REPRESENTATIONAL PURPOSES ONLY. DETAILS ARE CONCEPTUAL AND ARE SUBJECT TO CHANGE DURING DESIGN AND CONSTRUCTION
 DIMENSIONS ARE APPROXIMATE UNLESS NOTED OTHERWISE TO MEET A SPECIFIC CUSTOMER NEED.

PENN CARE
 DEMO

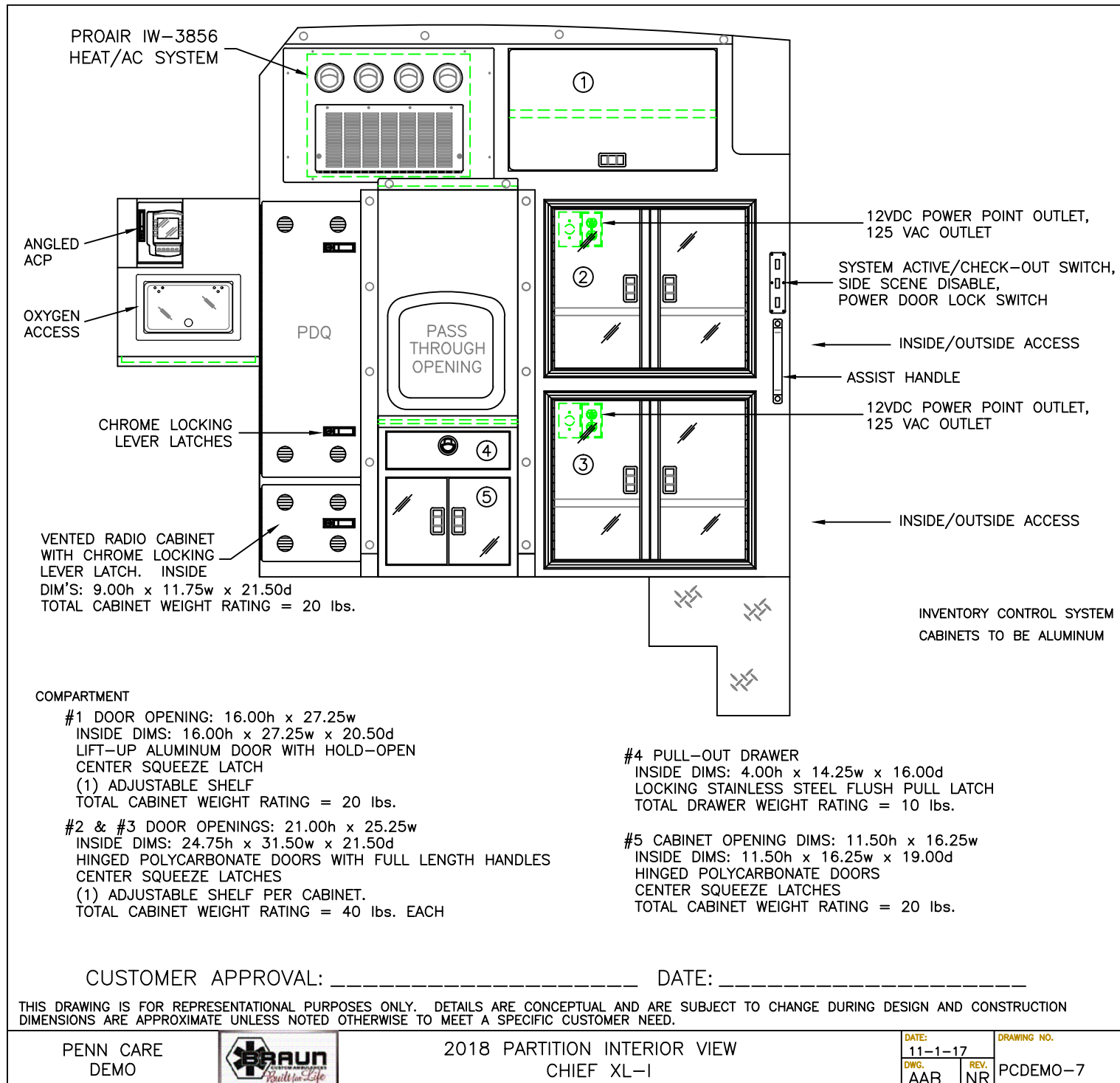


2018 CURBSIDE INTERIOR VIEW
 CHIEF XL-I

1:20

DATE: 11-1-17
 DWG. AAB
 REV. NR

DRAWING NO.
 PCDEMO-6



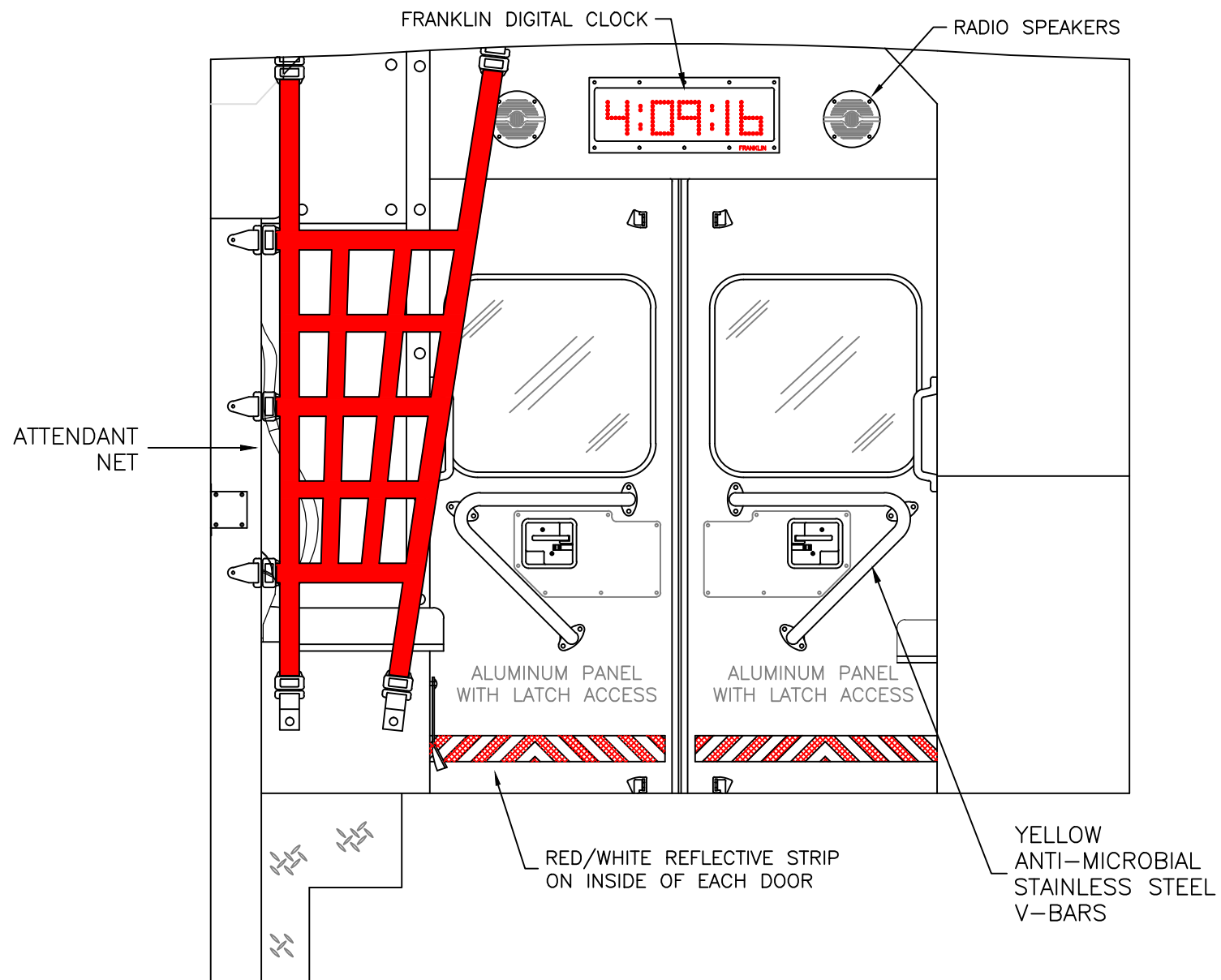
PENN CARE
DEMO



2018 PARTITION INTERIOR VIEW
CHIEF XL-I

DATE:
11-1-17
DWG.
AAB

DRAWING NO.
REV.
NR
PCDEMO-7



CUSTOMER APPROVAL: _____ DATE: _____

THIS DRAWING IS FOR REPRESENTATIONAL PURPOSES ONLY. DETAILS ARE CONCEPTUAL AND ARE SUBJECT TO CHANGE DURING DESIGN AND CONSTRUCTION
DIMENSIONS ARE APPROXIMATE UNLESS NOTED OTHERWISE TO MEET A SPECIFIC CUSTOMER NEED.

PENN CARE
DEMO

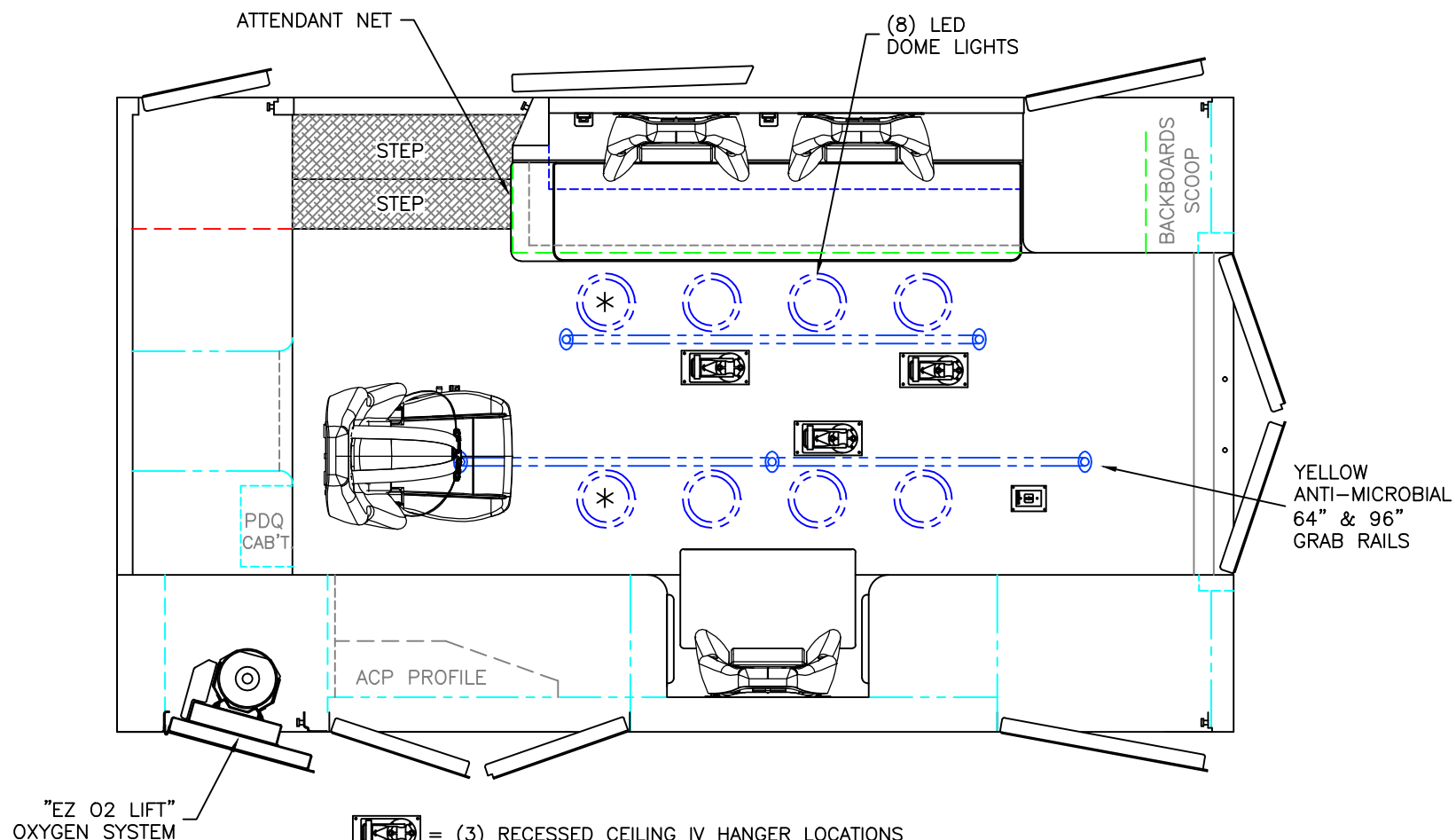


2018 REAR INTERIOR VIEW
CHIEF XL-I

1:12

DATE:
11-1-17
DWG. AAB
REV. NR

DRAWING NO.
PCDEMO-8



MODULE WIDTH = 96"
 MODULE LENGTH = 169"
 MODULE HEAD ROOM = 72"

UNIVERSAL TAPPING PLATE AND PRE-WIRE FOR FUTURE POWERLOAD INSTALLATION

CUSTOMER APPROVAL: _____ DATE: _____

THIS DRAWING IS FOR REPRESENTATIONAL PURPOSES ONLY. DETAILS ARE CONCEPTUAL AND ARE SUBJECT TO CHANGE DURING DESIGN AND CONSTRUCTION DIMENSIONS ARE APPROXIMATE UNLESS NOTED OTHERWISE TO MEET A SPECIFIC CUSTOMER NEED.

PENN CARE
 DEMO



2018 FLOOR INTERIOR VIEW
 CHIEF XL-I

1:22

DATE: 11-1-17		DRAWING NO.	
DWG. AAB	REV. NR	PCDEMO-9	