

DIMENSIONS FOR OVERALL HEIGHT AND LENGTH ARE APPROXIMATE

OVERALL HEIGHT = 112"

OVERALL WIDTH WITH RUB

RAILS & FENDERETTES = 98"

(7) WHELEN 900 SUPER LED WARNING LIGHTS
RED/RED/RED/WHITE/RED/RED/RED
WITH CLEAR LENSES

(5) TECNIQ S330 AMBER
MINI-LED MARKER LIGHTS

OEM POWER
ADJUSTABLE
MIRRORS

FLASHING HEADLIGHTS WITH
DAYTIME RUNNING LIGHTS

(2) WHELEN 700 RED
LED GRILLE LIGHTS
WITH CLEAR LENSES

HIDDEN UNLOCK SWITCH
IN GRILLE AREA

WHELEN SA315
100-WATT
SIREN SPEAKERS

THIS DRAWING IS FOR REPRESENTATIONAL PURPOSES ONLY. DETAILS ARE CONCEPTUAL AND ARE SUBJECT TO CHANGE DURING DESIGN AND CONSTRUCTION
DIMENSIONS ARE APPROXIMATE UNLESS NOTED OTHERWISE TO MEET A SPECIFIC CUSTOMER NEED.

BRAUN
CHIEF XL



2020 FRONT EXTERIOR VIEW
CHIEF XL-I/R4500-R5500 CHASSIS

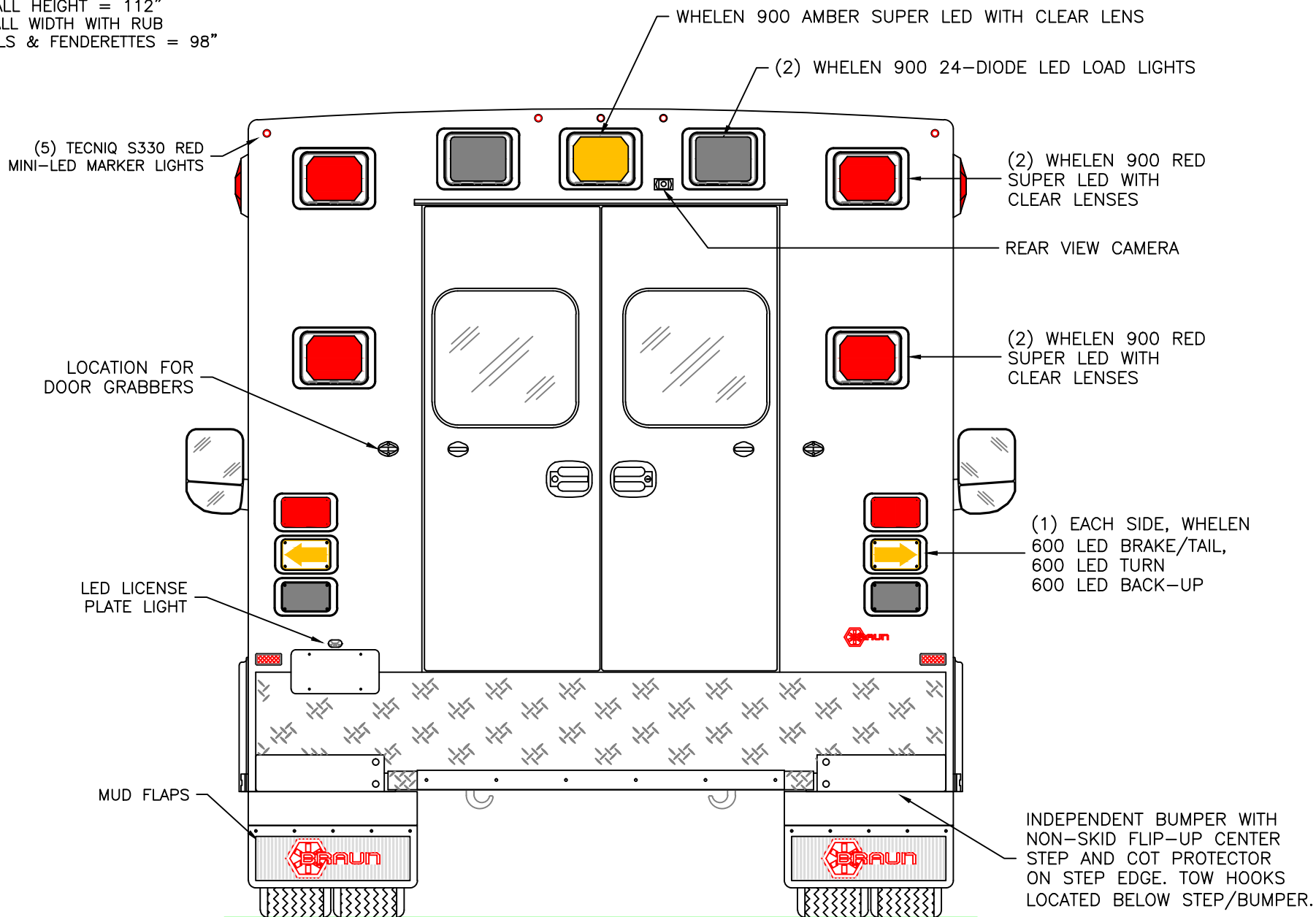
DATE:
02-17-20
DWG. AAB
REV. NR

DRAWING NO.
CHIEFXL-1

APPROVAL SIGNATURE:

DATE:

DIMENSIONS FOR OVERALL HEIGHT AND LENGTH ARE APPROXIMATE
 OVERALL HEIGHT = 112"
 OVERALL WIDTH WITH RUB
 RAILS & FENDERETTES = 98"



THIS DRAWING IS FOR REPRESENTATIONAL PURPOSES ONLY. DETAILS ARE CONCEPTUAL AND ARE SUBJECT TO CHANGE DURING DESIGN AND CONSTRUCTION
 DIMENSIONS ARE APPROXIMATE UNLESS NOTED OTHERWISE TO MEET A SPECIFIC CUSTOMER NEED.

BRAUN
 CHIEF XL



2020 REAR EXTERIOR VIEW
 CHIEF XL-I/R4500-R5500 CHASSIS

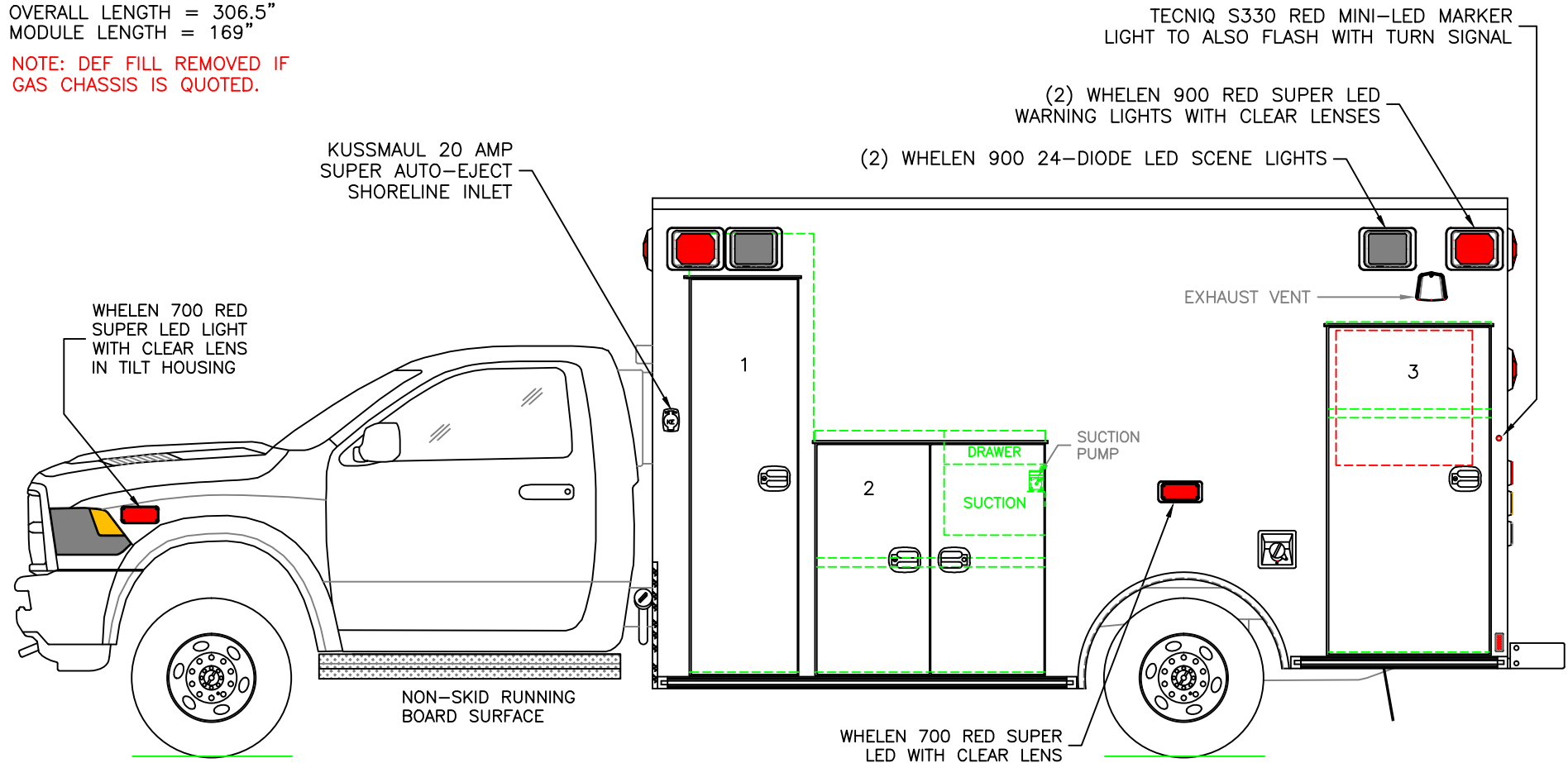
1:16

DATE:
 02-17-20
 DWG. AAB
 REV. NR

DRAWING NO.
 CHIEFXL-2

DIMENSIONS FOR OVERALL HEIGHT AND LENGTH ARE APPROXIMATE
 OVERALL HEIGHT = 112"
 OVERALL LENGTH = 306.5"
 MODULE LENGTH = 169"

NOTE: DEF FILL REMOVED IF
 GAS CHASSIS IS QUOTED.



COMPARTMENT
 O.S.S #1

CLEAR OPENING: 77.00h x 18.25w
 INSIDE DIM'S.: 86.75h x 24.50w x 20.75d
 BACKBOARD/SCOOP STORAGE

O.S.S #2

CLEAR OPENING: 44.25h x 39.50w
 INSIDE DIM'S.: 47.75h x 45.50w x 20.75d
 (1) ADJUSTABLE SHELF

O.S.S #3

CLEAR OPENING: 63.50h x 28.75w
 INSIDE DIM'S.: 65.25h x 32.50w x 20.75d
 INSIDE/OUTSIDE ACCESS
 (1) ADJUSTABLE SHELF

THIS DRAWING IS FOR REPRESENTATIONAL PURPOSES ONLY. DETAILS ARE CONCEPTUAL AND ARE SUBJECT TO CHANGE DURING DESIGN AND CONSTRUCTION
 DIMENSIONS ARE APPROXIMATE UNLESS NOTED OTHERWISE TO MEET A SPECIFIC CUSTOMER NEED.

BRAUN
 CHIEF XL



2020 STREETSIDE EXTERIOR VIEW
 CHIEF XL-I/R4500-R5500 CHASSIS

1:30

DATE:
 02-17-20
 DWG.
 AAB
 REV.
 NR

DRAWING NO.
 CHIEFXL-3

DIMENSIONS FOR OVERALL HEIGHT AND LENGTH ARE APPROXIMATE

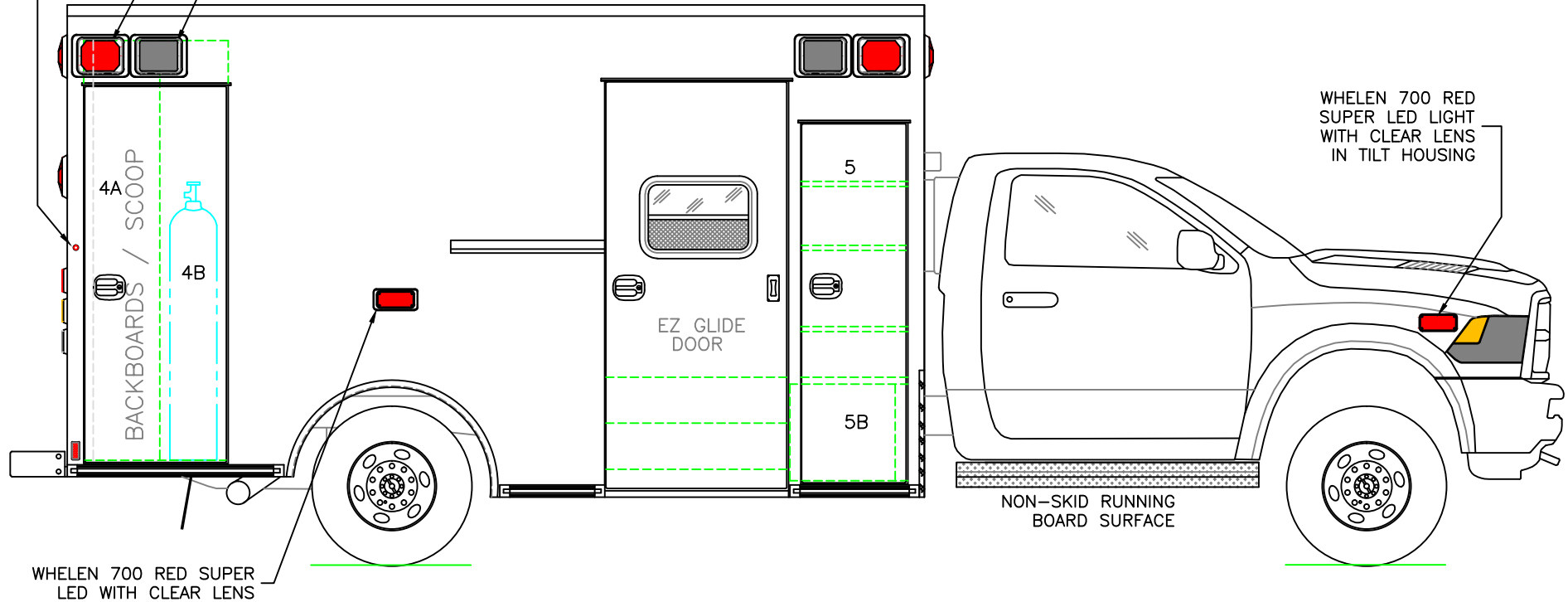
OVERALL HEIGHT = 112"
OVERALL LENGTH = 306.5"
MODULE LENGTH = 169"

TECNIQ S330 RED MINI-LED MARKER
LIGHT TO ALSO FLASH WITH TURN SIGNAL

(2) WHELEN 900 RED SUPER LED
WARNING LIGHTS WITH CLEAR LENSES

(2) WHELEN 900 24-DIODE LED SCENE LIGHTS

WHELEN 700 RED
SUPER LED LIGHT
WITH CLEAR LENS
IN TILT HOUSING



COMPARTMENT
O.S.S. #4

CLEAR OPENING: 73.00h x 24.75w
INSIDE DIM'S. 4A: 82.75h x 15.00w x 20.75d
BACKBOARD/SCOOP STORAGE

INSIDE DIM'S. 4B: 82.75h x 13.50w x 12.00d
MAIN OXYGEN STORAGE

O.S.S. #5

CLEAR OPENING: 69.50h x 17.50w
INSIDE DIM'S. 5A: SEE PARTITION INTERIOR VIEW
INSIDE/OUTSIDE STORAGE WITH (3) ADJUSTABLE SHELVES

INSIDE DIM'S. 5B: 19.00h x 20.75w x 18.00d

THIS DRAWING IS FOR REPRESENTATIONAL PURPOSES ONLY. DETAILS ARE CONCEPTUAL AND ARE SUBJECT TO CHANGE DURING DESIGN AND CONSTRUCTION
DIMENSIONS ARE APPROXIMATE UNLESS NOTED OTHERWISE TO MEET A SPECIFIC CUSTOMER NEED.

BRAUN
CHIEF XL

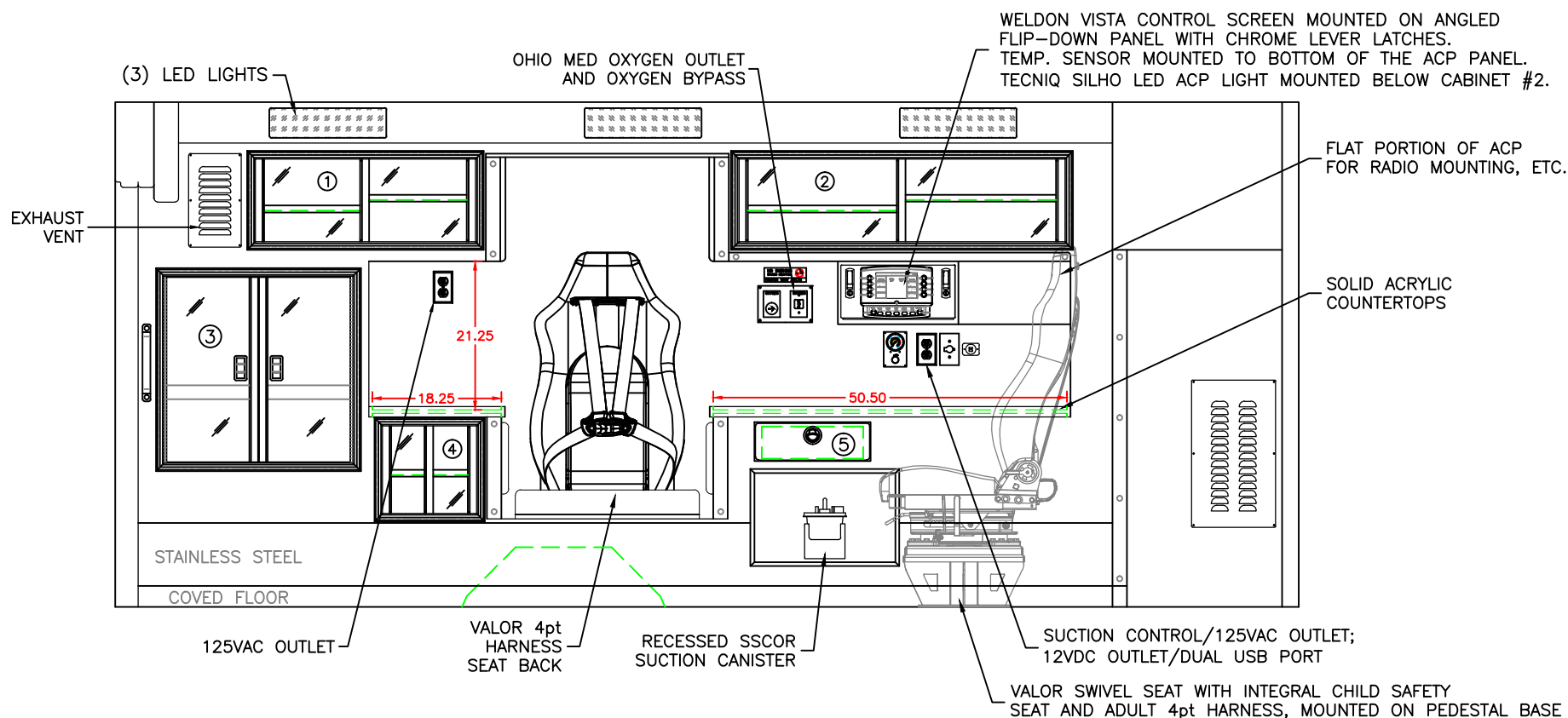


2020 CURBSIDE EXTERIOR VIEW
CHIEF XL-I/R4500-R5500 CHASSIS

1:30

DATE: 02-17-20	DWG. AAB	REV. NR
-------------------	-------------	------------

DRAWING NO.
CHIEFXL-4



COMPARTMENT

#1 DOOR OPENING: 11.75h x 31.50w

INSIDE DIMS: 13.25h x 33.00w x 17.25d

(1) ADJ SHELF EACH SIDE OF CENTER DIVIDER
SLIDING POLYCARBONATE DOORS

TOTAL CABINET WEIGHT RATING = 25 lbs.

#2 DOOR OPENING: 11.75h x 46.50w

INSIDE DIMS: 13.25h x 48.00w x 17.25d

(1) ADJ SHELF EACH SIDE OF CENTER DIVIDER
SLIDING POLYCARBONATE DOORS

TOTAL CABINET WEIGHT RATING = 25 lbs.

#3 DOOR OPENING: 26.50h x 26.75w

INSIDE DIMS: O.S.S. #3

HINGED POLYCARBONATE DOORS WITH FULL LENGTH
HANDLES AND CENTER SQUEEZE LATCHES

TOTAL CABINET WEIGHT RATING = 40 lbs.

#4 DOOR OPENING: 12.50h x 13.50w

INSIDE DIMS: 14.00h x 15.00w x 17.25d

(1) ADJUSTABLE SHELF
SLIDING POLYCARBONATE DOORS

TOTAL CABINET WEIGHT RATING = 15 lbs.

#5 PULL-OUT DRAWER WITH HINGED ACRYLIC WRITING SURFACE

INSIDE DIMS: 4.50h x 14.50w x 13.25d

LOCKING STAINLESS STEEL FLUSH PULL LATCH

TOTAL DRAWER WEIGHT RATING = 10 lbs.

CABINETS TO BE ALUMINUM

THIS DRAWING IS FOR REPRESENTATIONAL PURPOSES ONLY. DETAILS ARE CONCEPTUAL AND ARE SUBJECT TO CHANGE DURING DESIGN AND CONSTRUCTION
DIMENSIONS ARE APPROXIMATE UNLESS NOTED OTHERWISE TO MEET A SPECIFIC CUSTOMER NEED.

BRAUN
CHIEF XL

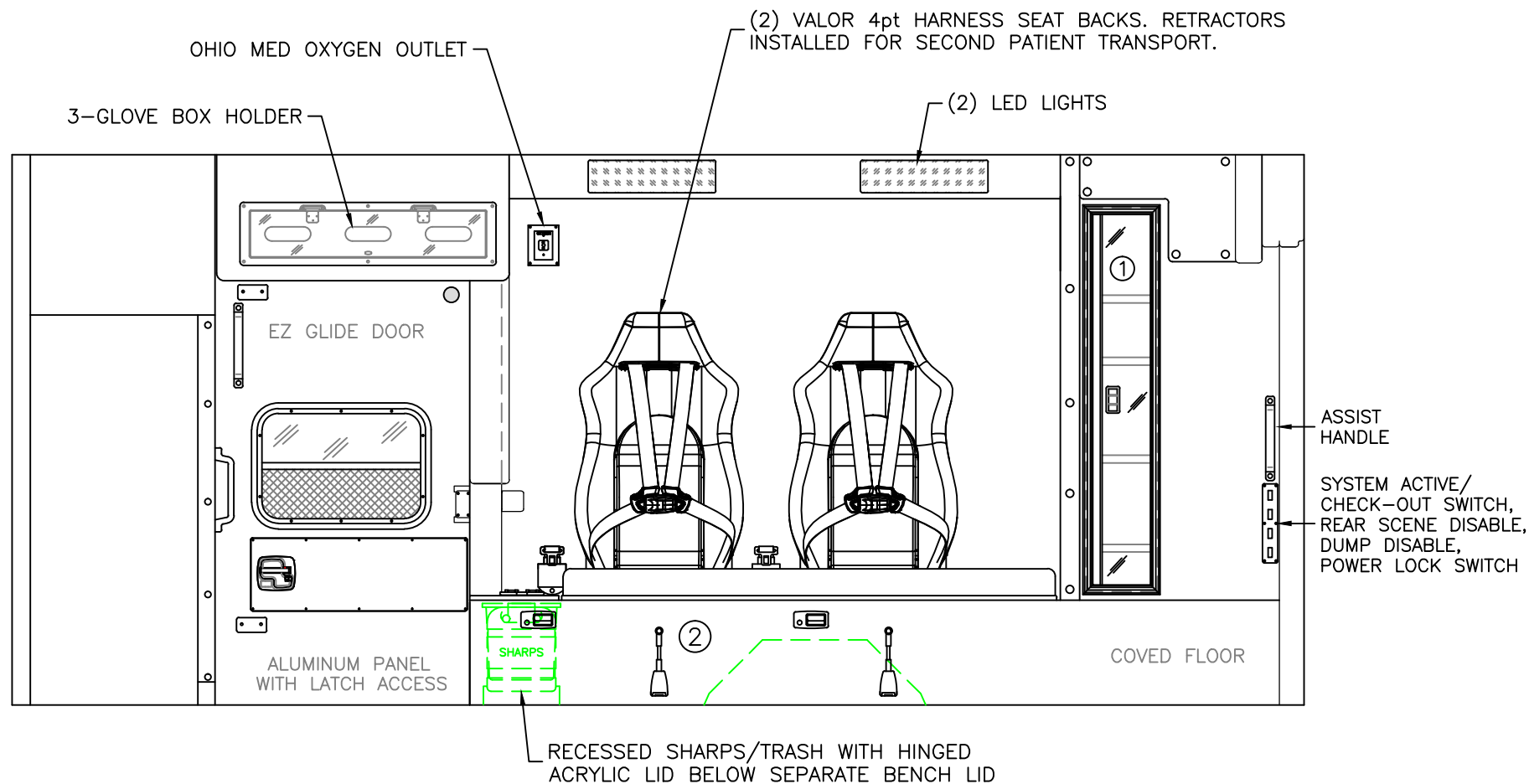


2020 STREETSIDE INTERIOR VIEW
CHIEF XL-I

1:22

DATE:
02-17-20
DWG. AAB
REV. NR

DRAWING NO.
CHIEFXL-5



COMPARTMENT

#1 DOOR OPENING: 48.00h x 7.25w
 INSIDE DIMS: 50.00h x 11.50w x 7.50d
 HINGED POLYCARBONATE DOOR WITH FULL LENGTH
 HANDLE AND CENTER SQUEEZE LATCH
 (4) ADJUSTABLE SHELVES
 TOTAL CABINET WEIGHT RATING = 25 lbs.

#2 INSIDE DIM'S: 14.25h x 77.00w x 21.00d

CABINETS TO BE ALUMINUM

THIS DRAWING IS FOR REPRESENTATIONAL PURPOSES ONLY. DETAILS ARE CONCEPTUAL AND ARE SUBJECT TO CHANGE DURING DESIGN AND CONSTRUCTION
 DIMENSIONS ARE APPROXIMATE UNLESS NOTED OTHERWISE TO MEET A SPECIFIC CUSTOMER NEED.

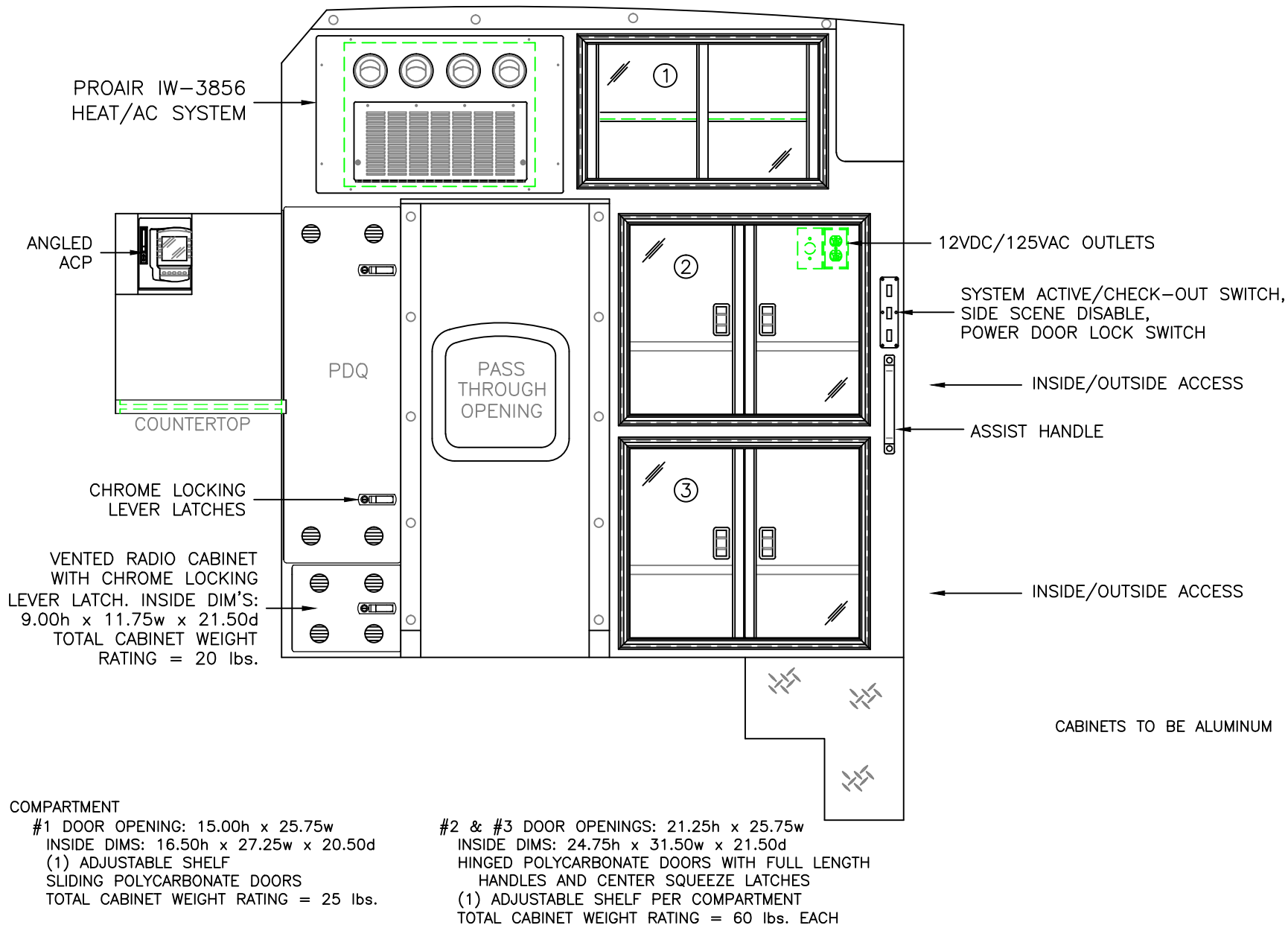
BRAUN
CHIEF XL



2020 CURBSIDE INTERIOR VIEW
CHIEF XL-I

DATE: 02-17-20	DRAWING NO. CHIEFXL-6	
DWG. AAB	REV. NR	

1:20



THIS DRAWING IS FOR REPRESENTATIONAL PURPOSES ONLY. DETAILS ARE CONCEPTUAL AND ARE SUBJECT TO CHANGE DURING DESIGN AND CONSTRUCTION
DIMENSIONS ARE APPROXIMATE UNLESS NOTED OTHERWISE TO MEET A SPECIFIC CUSTOMER NEED.

BRAUN
CHIEF XL



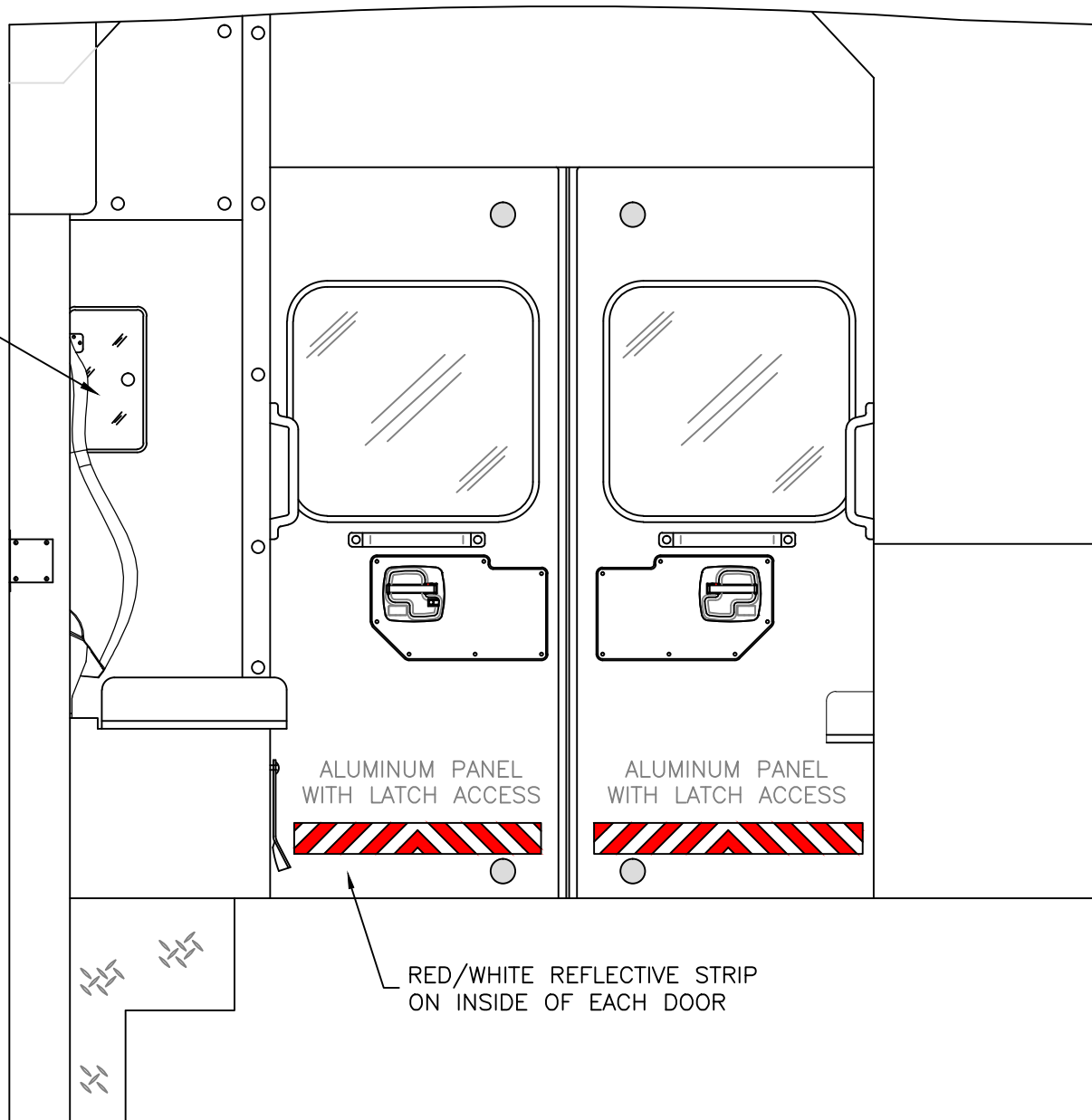
2020 PARTITION INTERIOR VIEW
CHIEF XL-I

DATE:
02-17-20
DWG.
AAB

REV.
NR

DRAWING NO.
CHIEFXL-7

OXYGEN ACCESS



ALUMINUM PANEL
WITH LATCH ACCESS

ALUMINUM PANEL
WITH LATCH ACCESS

RED/WHITE REFLECTIVE STRIP
ON INSIDE OF EACH DOOR

THIS DRAWING IS FOR REPRESENTATIONAL PURPOSES ONLY. DETAILS ARE CONCEPTUAL AND ARE SUBJECT TO CHANGE DURING DESIGN AND CONSTRUCTION DIMENSIONS ARE APPROXIMATE UNLESS NOTED OTHERWISE TO MEET A SPECIFIC CUSTOMER NEED.

BRAUN
CHIEF XL



2020 REAR INTERIOR VIEW
CHIEF XL-I

1:12

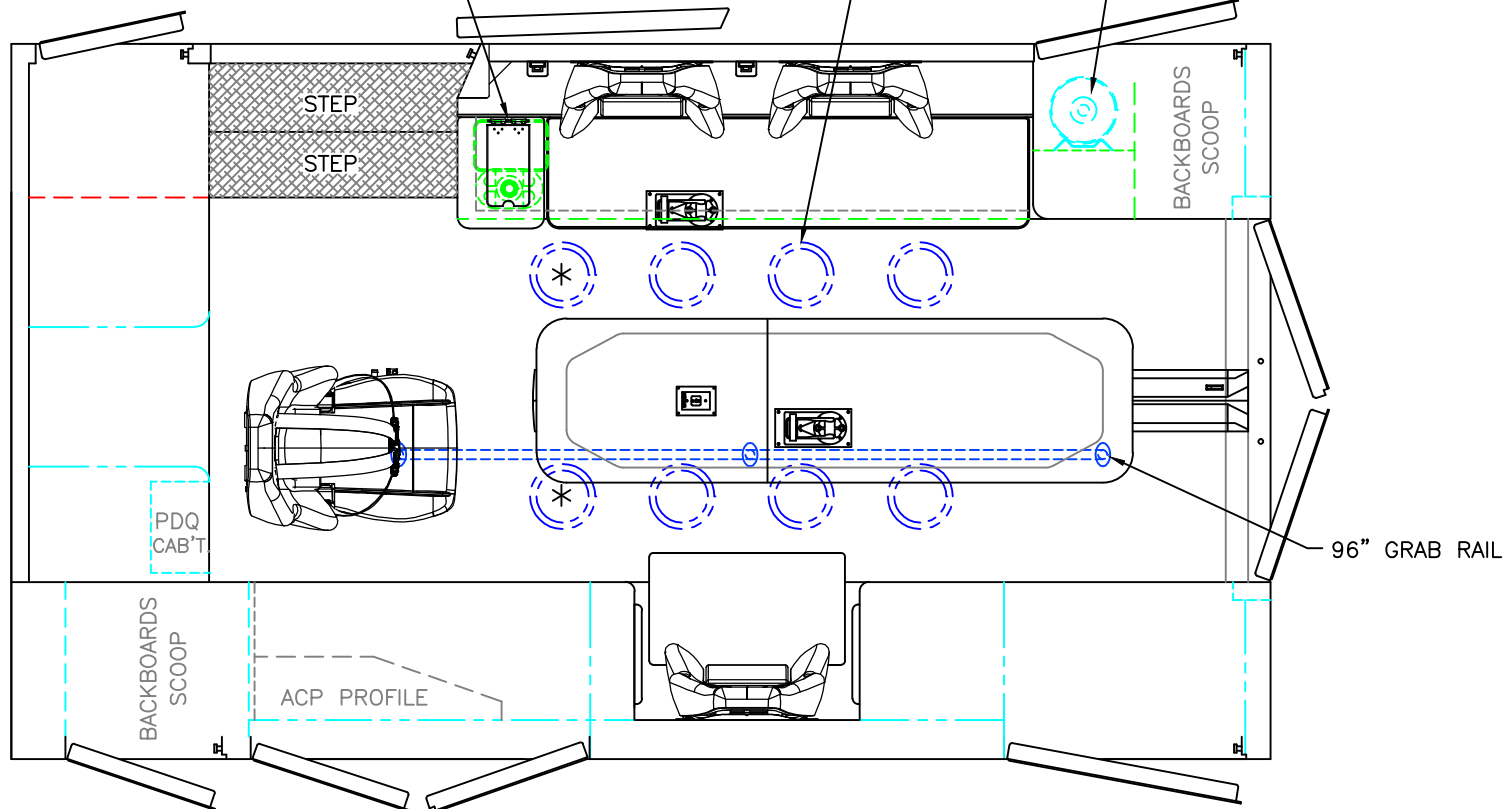
DATE:	02-17-20
DWG.	AAB
REV.	NR

DRAWING NO.
CHIEFXL-8

RECESSED SHARPS/TRASH WITH HINGED
ACRYLIC LID BELOW SEPARATE BENCH LID

(8) LED
DOME LIGHTS

OXYGEN STORAGE



 = (2) RECESSED CEILING IV HANGER LOCATIONS

 = (1) CEILING OXYGEN OUTLET

* (2) ANTENNA BASES LOCATED OUTBOARD OF
DOME LIGHTS WITH COAX SERVICE LOOP

96" FERNO STAT-TRAC CENTER MOUNT COT HARDWARE

MODULE WIDTH = 96"
MODULE LENGTH = 169"
MODULE HEAD ROOM = 72"

THIS DRAWING IS FOR REPRESENTATIONAL PURPOSES ONLY. DETAILS ARE CONCEPTUAL AND ARE SUBJECT TO CHANGE DURING DESIGN AND CONSTRUCTION
DIMENSIONS ARE APPROXIMATE UNLESS NOTED OTHERWISE TO MEET A SPECIFIC CUSTOMER NEED.

BRAUN
CHIEF XL



2020 FLOOR INTERIOR VIEW
CHIEF XL-I

1:22

DATE:	02-17-20
DWG.	REV.
AAB	NR

DRAWING NO.
CHIEFXL-9