

DIMENSIONS FOR OVERALL HEIGHT AND LENGTH ARE APPROXIMATE
 OVERALL HEIGHT = 106.5"
 OVERALL WIDTH WITH RUB
 RAILS & FENDERETTES = 98"

(7) WHELEN M9 SUPER LED WARNING LIGHTS WITH CLEAR LENSES:
 RED / RED / RED / WHITE / RED / RED / RED

(5) TECNIQ S330 AMBER
 MINI-LED MARKER LIGHTS

OEM POWER
 ADJUSTABLE
 MIRRORS

FLASHING HEADLIGHTS W/
 DAYTIME RUNNING LIGHTS

MINI-LED RUNNING
 BOARD LIGHTS

(4) WHELEN M2 RED
 SUPER LED GRILLE
 LIGHTS WITH CLEAR
 LENSES

(2) WHELEN SA315 SERIES
 SIREN SPEAKERS BEHIND
 GRILLE AREA

HIDDEN UNLOCK SWITCH
 IN GRILLE AREA

THIS DRAWING IS FOR REPRESENTATIONAL PURPOSES ONLY. DETAILS ARE CONCEPTUAL AND ARE SUBJECT TO CHANGE DURING DESIGN AND CONSTRUCTION
 DIMENSIONS ARE APPROXIMATE UNLESS NOTED OTHERWISE TO MEET A SPECIFIC CUSTOMER NEED.

PENN CARE
 DEMO UNIT



2020 FRONT EXTERIOR VIEW
 CHIEF XL-III/FORD E-450 CHASSIS-GAS ENGINE

DATE:
 4-5-21
 DWG.
 GLF

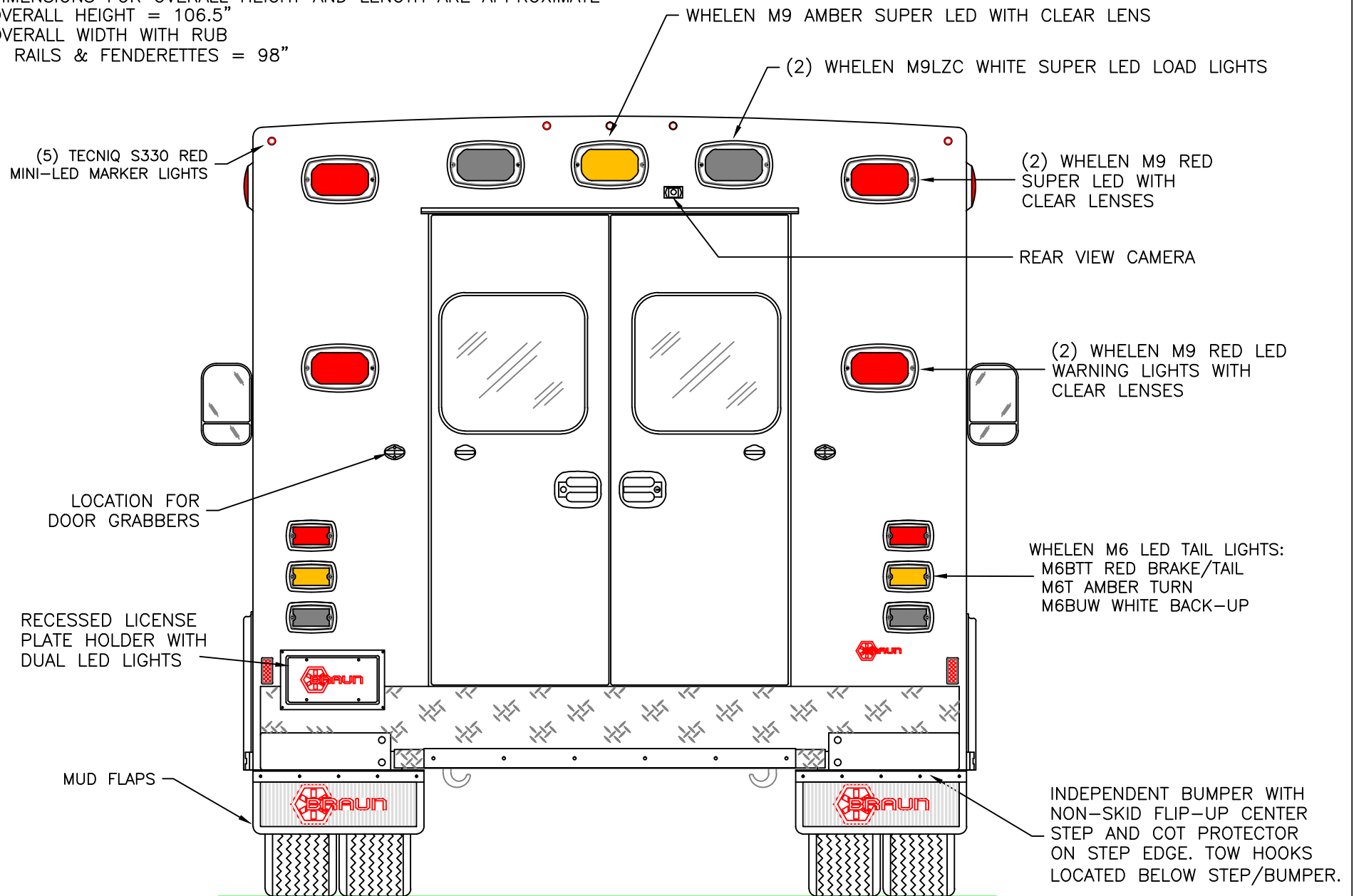
REV.
 A

DRAWING NO.
 E450
 DEMO-1

APPROVAL SIGNATURE:

DATE:

DIMENSIONS FOR OVERALL HEIGHT AND LENGTH ARE APPROXIMATE
 OVERALL HEIGHT = 106.5"
 OVERALL WIDTH WITH RUB
 RAILS & FENDERETTES = 98"



THIS DRAWING IS FOR REPRESENTATIONAL PURPOSES ONLY. DETAILS ARE CONCEPTUAL AND ARE SUBJECT TO CHANGE DURING DESIGN AND CONSTRUCTION
 DIMENSIONS ARE APPROXIMATE UNLESS NOTED OTHERWISE TO MEET A SPECIFIC CUSTOMER NEED.

PENN CARE
 DEMO UNIT



2020 REAR EXTERIOR VIEW
 CHIEF XL-III/FORD E-450 CHASSIS

DATE:
 4-5-21
 DWG.
 GLF

REV.
 A

DRAWING NO.
 E450
 DEMO-2

DIMENSIONS FOR OVERALL HEIGHT AND LENGTH ARE APPROXIMATE
 OVERALL HEIGHT = 106.5"
 OVERALL LENGTH = 272.75"
 MODULE LENGTH = 169"

TECNIQ S330 RED MINI-LED MARKER
 LIGHT TO ALSO FLASH WITH TURN SIGNAL

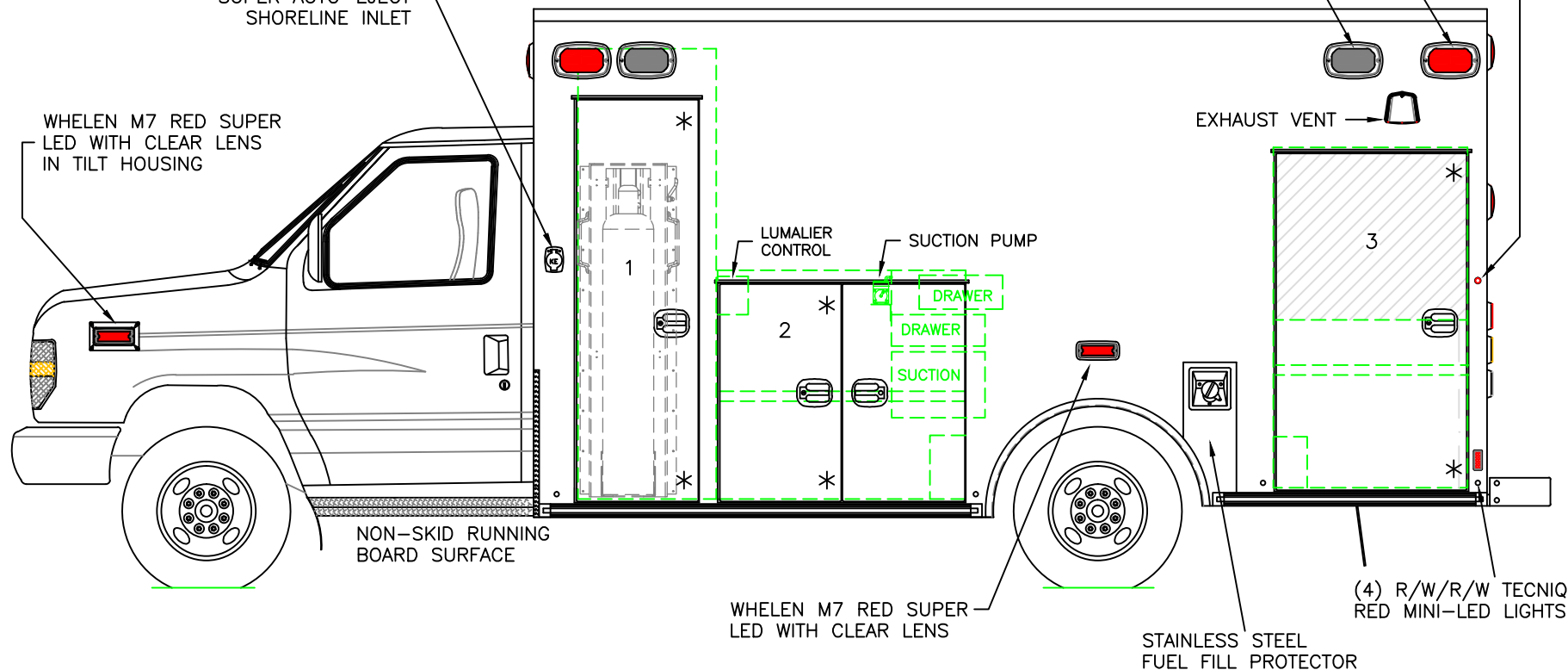
(2) WHELEN M9 RED SUPER LED WARNING LIGHTS WITH CLEAR LENSES

(2) WHELEN M9LZC WHITE SUPER LED SCENE LIGHTS

KUSSMAUL 20 AMP
 SUPER AUTO-EJECT
 SHORELINE INLET

WHELEN M7 RED SUPER
 LED WITH CLEAR LENS
 IN TILT HOUSING

EXHAUST VENT



COMPARTMENT

O.S.S #1

CLEAR OPENING: 70.00h x 18.25w
 INSIDE DIM'S.: 79.75h x 24.50w x 20.75d
 BRAUN EZ-02 OXYGEN LIFT ON INSIDE OF DOOR

O.S.S #2

CLEAR OPENING: 37.50h x 38.50w
 INSIDE DIM'S.: 40.50h x 44.00w x 20.75d
 (1) ADJUSTABLE SHELF

O.S.S #3

CLEAR OPENING: 58.50h x 30.75w
 INSIDE DIM'S.: 60.25h x 34.50w x 20.75d
 UPPER AREA APPROX. 12" DEPTH DUE TO
 INTERIOR CABINET
 (1) FULL-DEPTH ADJUSTABLE SHELF
 IN LOWER AREA

* = AMBER MINI-LED INSIDE TOP/BOTTOM CORNER
 OF FORWARD-HINGED MODULE DOORS

THIS DRAWING IS FOR REPRESENTATIONAL PURPOSES ONLY. DETAILS ARE CONCEPTUAL AND ARE SUBJECT TO CHANGE DURING DESIGN AND CONSTRUCTION
 DIMENSIONS ARE APPROXIMATE UNLESS NOTED OTHERWISE TO MEET A SPECIFIC CUSTOMER NEED.

PENN CARE
 DEMO UNIT



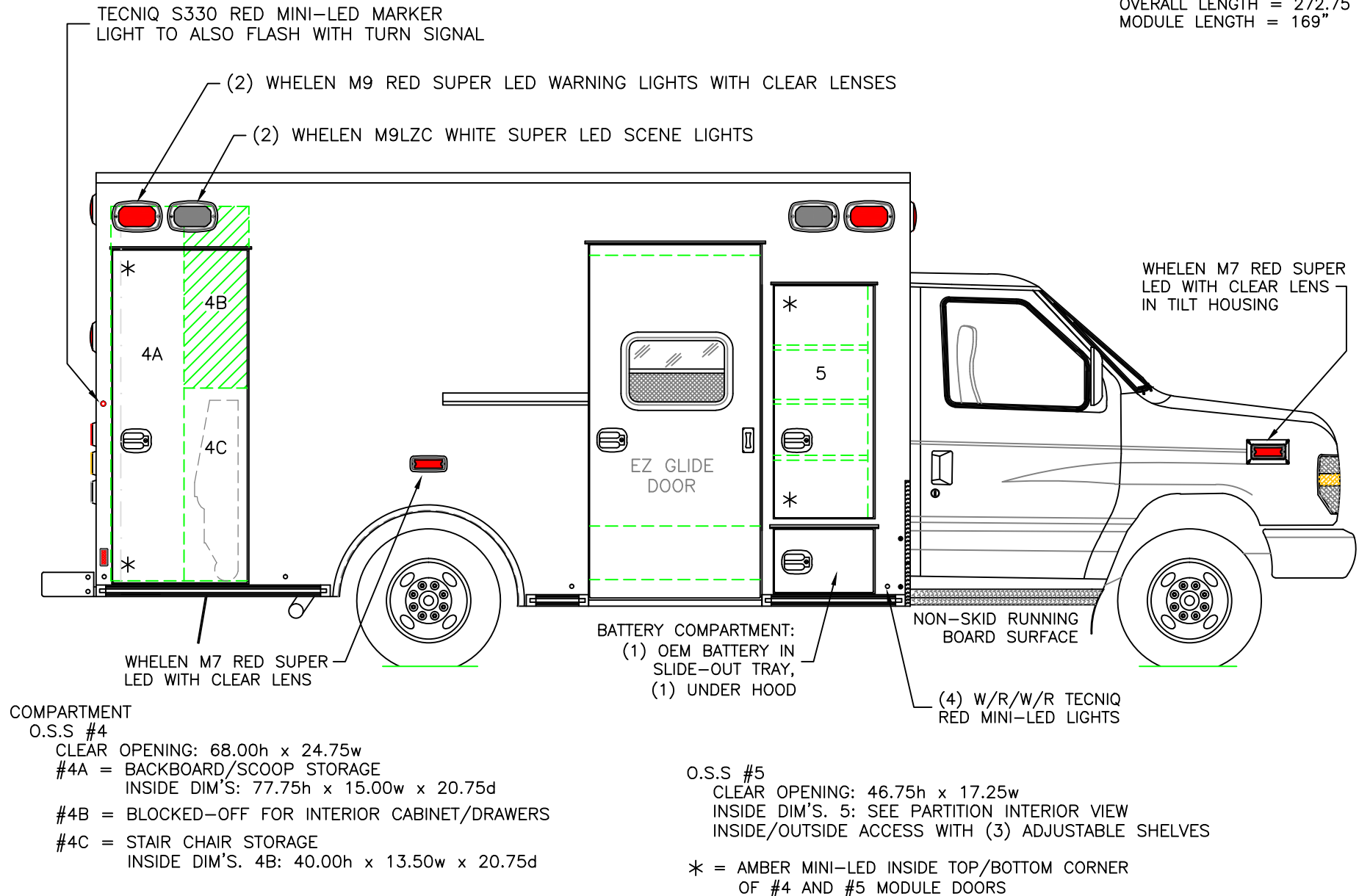
2020 STREETSIDE EXTERIOR VIEW
 CHIEF XL-III/FORD E-450 CHASSIS

DATE:
 5-26-21
 DWG.
 GLF

REV.
 A

DRAWING NO.
 E450
 DEMO-3

DIMENSIONS FOR OVERALL HEIGHT AND LENGTH ARE APPROXIMATE
 OVERALL HEIGHT = 106.5"
 OVERALL LENGTH = 272.75"
 MODULE LENGTH = 169"



THIS DRAWING IS FOR REPRESENTATIONAL PURPOSES ONLY. DETAILS ARE CONCEPTUAL AND ARE SUBJECT TO CHANGE DURING DESIGN AND CONSTRUCTION
 DIMENSIONS ARE APPROXIMATE UNLESS NOTED OTHERWISE TO MEET A SPECIFIC CUSTOMER NEED.

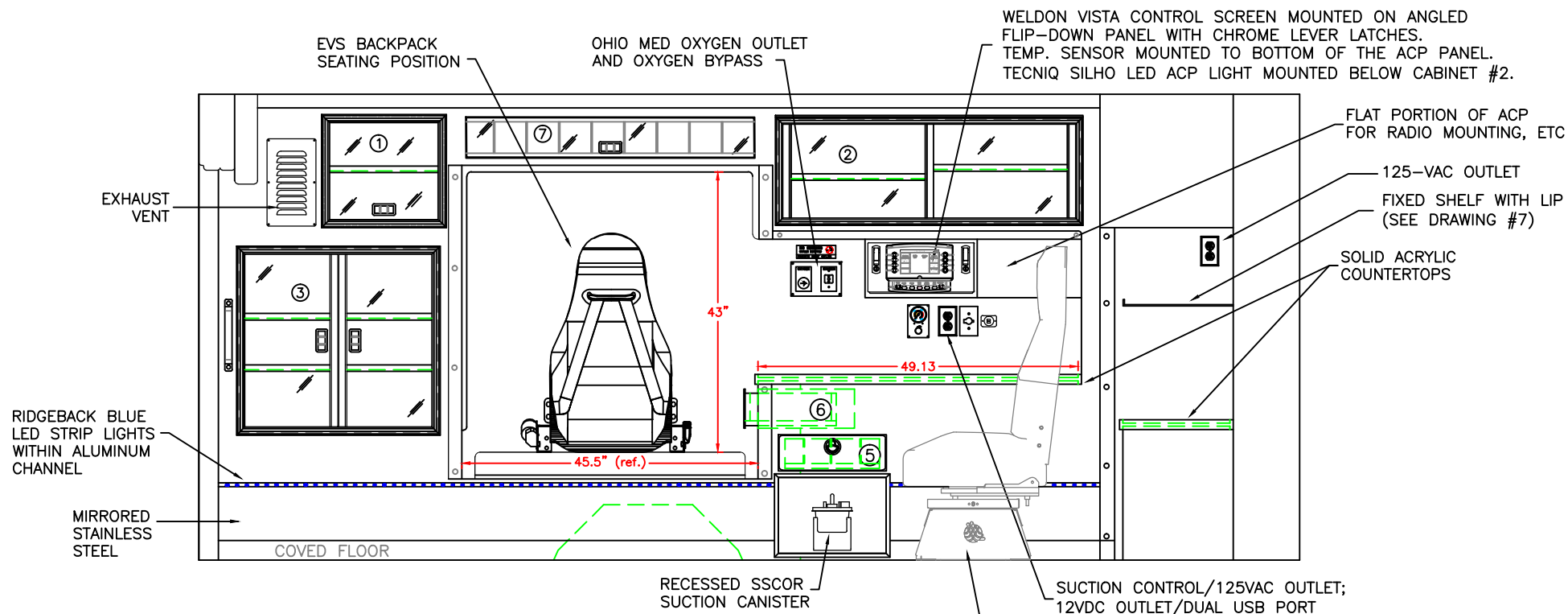
PENN CARE
 DEMO UNIT



2020 CURBSIDE EXTERIOR VIEW
 CHIEF XL-III/FORD E-450 CHASSIS

DATE:
 5-26-21
 DWG.
 GLF
 REV.
 A

DRAWING NO.
 E450
 DEMO-4



COMPARTMENT

#1 DOOR OPENING: 15.00h x 16.75w
 INSIDE DIMS: 16.50h x 18.25 x 17.25d
 (1) ADJUSTABLE SHELF
 TOP-HINGED POLYCARBONATE DOOR WITH
 CENTER SQUEEZE LATCH
 TOTAL CABINET WEIGHT RATING = 10 lbs.

#2 DOOR OPENING: 14.25h x 44.75w
 INSIDE DIMS: 16.50h x 46.50w x 17.25d
 (1) ADJ SHELF EACH SIDE OF CENTER DIVIDER
 SLIDING POLYCARBONATE DOORS
 TOTAL CABINET WEIGHT RATING = 25 lbs.

#3 DOOR OPENING: 26.50h x 28.75w
 INSIDE DIMS: 30.50h x 34.50w x 7.50d
 HINGED POLYCARBONATE DOORS WITH FULL HANDLES
 AND CENTER SQUEEZE LATCHES
 (2) ADJUSTABLE SHELVES
 TOTAL CABINET WEIGHT RATING = 40 lbs.

#4 (CABINET DELETED)

#5 PULL-OUT DRAWER WITH HINGED ACRYLIC WRITING SURFACE
 INSIDE DIMS: 3.75h x 14.50w x 11.75d
 LOCKING STAINLESS STEEL FLUSH PULL LATCH
 (3) FULL LENGTH ADJUSTABLE DIVIDERS
 TOTAL DRAWER WEIGHT RATING = 10 lbs.

#6 PULL-OUT DRAWER TOWARD CPR SEAT
 INSIDE DIMS: 4.25h x 14.50w x 12.50d
 LOCKING STAINLESS STEEL FLUSH PULL LATCH
 (3) FULL LENGTH ADJUSTABLE DIVIDERS
 TOTAL DRAWER WEIGHT RATING = 10 lbs.

#7 DOOR OPENING: 6.25h x 44.25w
 INSIDE DIMS: 5.25h x 44.25w x 17.25d
 TOP-HINGED POLYCARBONATE DOOR WITH
 CENTER SQUEEZE LATCH
 (8) ADJUSTABLE ACRYLIC DIVIDERS
 TOTAL CABINET WEIGHT RATING = 10 lbs.

CABINETS TO BE ALUMINUM
 CABINETS TO HAVE RIDGEBACK BLUE LED STRIP LIGHTS
 CABINET #2 HAS LIFT-UP RESTOCKING FRAME
 SLIDING CABINET DOORS TO HAVE INVENTORY LOOPS

WELDON VISTA CONTROL SCREEN MOUNTED ON ANGLED
 FLIP-DOWN PANEL WITH CHROME LEVER LATCHES.
 TEMP. SENSOR MOUNTED TO BOTTOM OF THE ACP PANEL.
 TECNIQ SILHO LED ACP LIGHT MOUNTED BELOW CABINET #2.

FLAT PORTION OF ACP
 FOR RADIO MOUNTING, ETC

125-VAC OUTLET

FIXED SHELF WITH LIP
 (SEE DRAWING #7)

SOLID ACRYLIC
 COUNTERTOPS

SUCTION CONTROL/125VAC OUTLET;
 12VDC OUTLET/DUAL USB PORT

EVS ATTENDANT SEAT WITH INTEGRAL CHILD SAFETY SEAT
 AND ADULT BACKPACK HARNESS, MOUNTED ON SWIVEL BASE

THIS DRAWING IS FOR REPRESENTATIONAL PURPOSES ONLY. DETAILS ARE CONCEPTUAL AND ARE SUBJECT TO CHANGE DURING DESIGN AND CONSTRUCTION
 DIMENSIONS ARE APPROXIMATE UNLESS NOTED OTHERWISE TO MEET A SPECIFIC CUSTOMER NEED.

PENN CARE
 DEMO UNIT

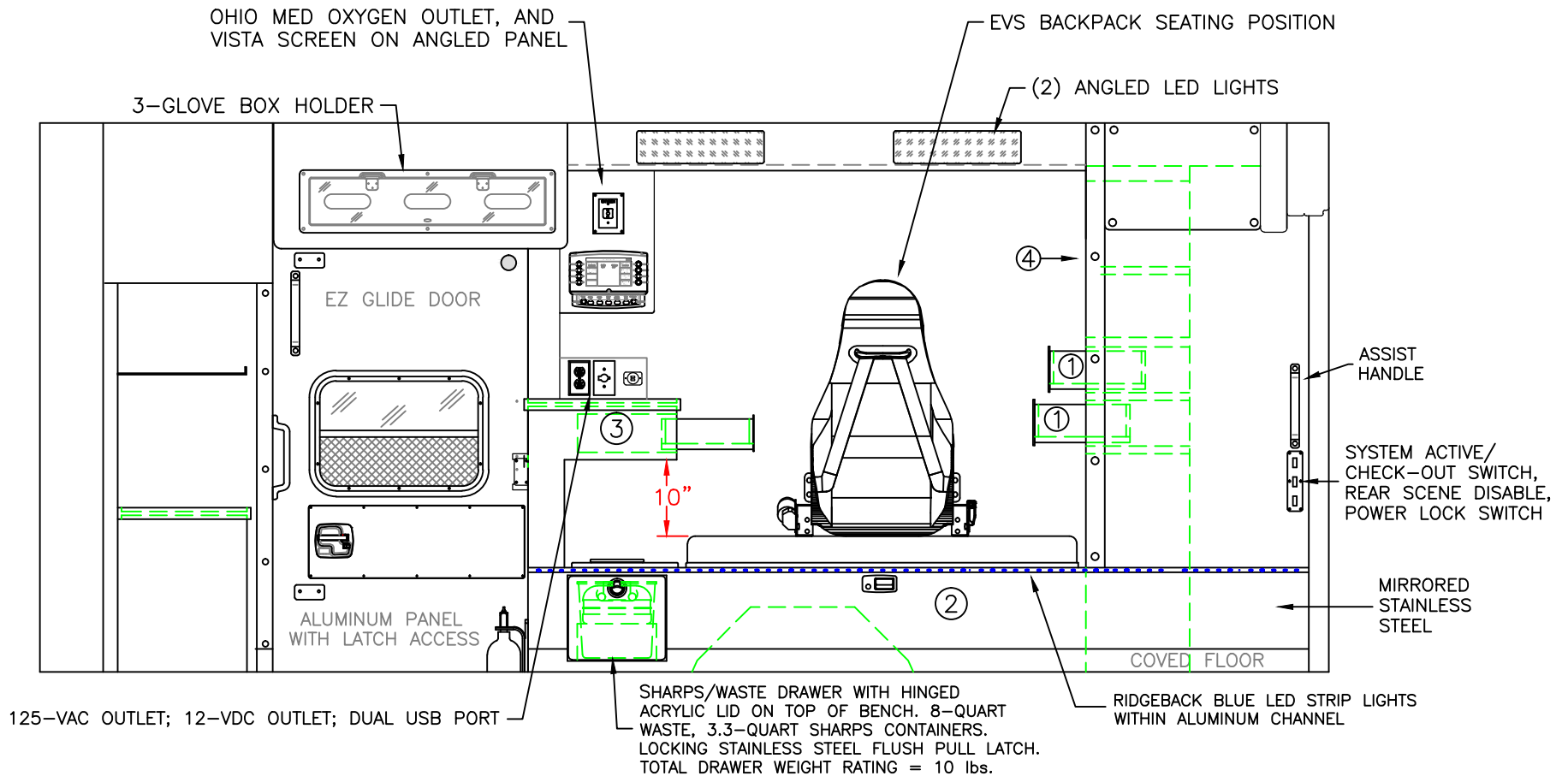


2020 STREETSIDE INTERIOR VIEW
 CHIEF XL-III

DATE:
 5-26-21
 DWG.
 GLF

REV.
 A

DRAWING NO.
 E450
 DEMO-5



COMPARTMENT

#1 = TWO PULL-OUT DRAWER TOWARD SEATING AREA
 INSIDE DIMS: 4.25h x 14.00w x 11.50d
 LOCKING STAINLESS STEEL FLUSH PULL LATCHES
 (3) FULL LENGTH ADJUSTABLE DIVIDERS LOCATED
 FRONT-TO-REAR IN EACH DRAWER, ON EITHER SIDE
 OF LATCH TO MAXIMIZE DRAWER DEPTH
 FORWARD-FACING DRAWERS DO NOT HAVE WEIGHT RATING

#3 CABINET WITH SOLID ACRYLIC COUNTERTOP
 ONE PULL-OUT DRAWER TOWARDS BENCH
 INSIDE DIMS: 3.25h x 14.00w x 11.00d
 LOCKING STAINLESS STEEL FLUSH PULL LATCH
 (3) FULL LENGTH ADJUSTABLE DIVIDERS LOCATED
 FRONT-TO-REAR IN DRAWER, ON EITHER SIDE
 OF LATCH TO MAXIMIZE DRAWER DEPTH
 TOTAL DRAWER WEIGHT RATING = 10 lbs.

#4 DOOR OPENING: 20.50h x 16.00w
 INSIDE DIMS: 20.50h x 16.00w x 12.50d
 HINGED POLYCARBONATE DOORS WITH FULL HANDLES
 AND CENTER SQUEEZE LATCHES
 (1) ADJUSTABLE SHELF
 FORWARD-FACING CABINET DOES NOT HAVE WEIGHT RATING

#2 INSIDE DIM'S: 14.25h x 54.00w x 21.00d

CABINETS TO BE ALUMINUM

CABINETS TO HAVE RIDGEBACK BLUE LED STRIP LIGHTS

THIS DRAWING IS FOR REPRESENTATIONAL PURPOSES ONLY. DETAILS ARE CONCEPTUAL AND ARE SUBJECT TO CHANGE DURING DESIGN AND CONSTRUCTION
 DIMENSIONS ARE APPROXIMATE UNLESS NOTED OTHERWISE TO MEET A SPECIFIC CUSTOMER NEED.

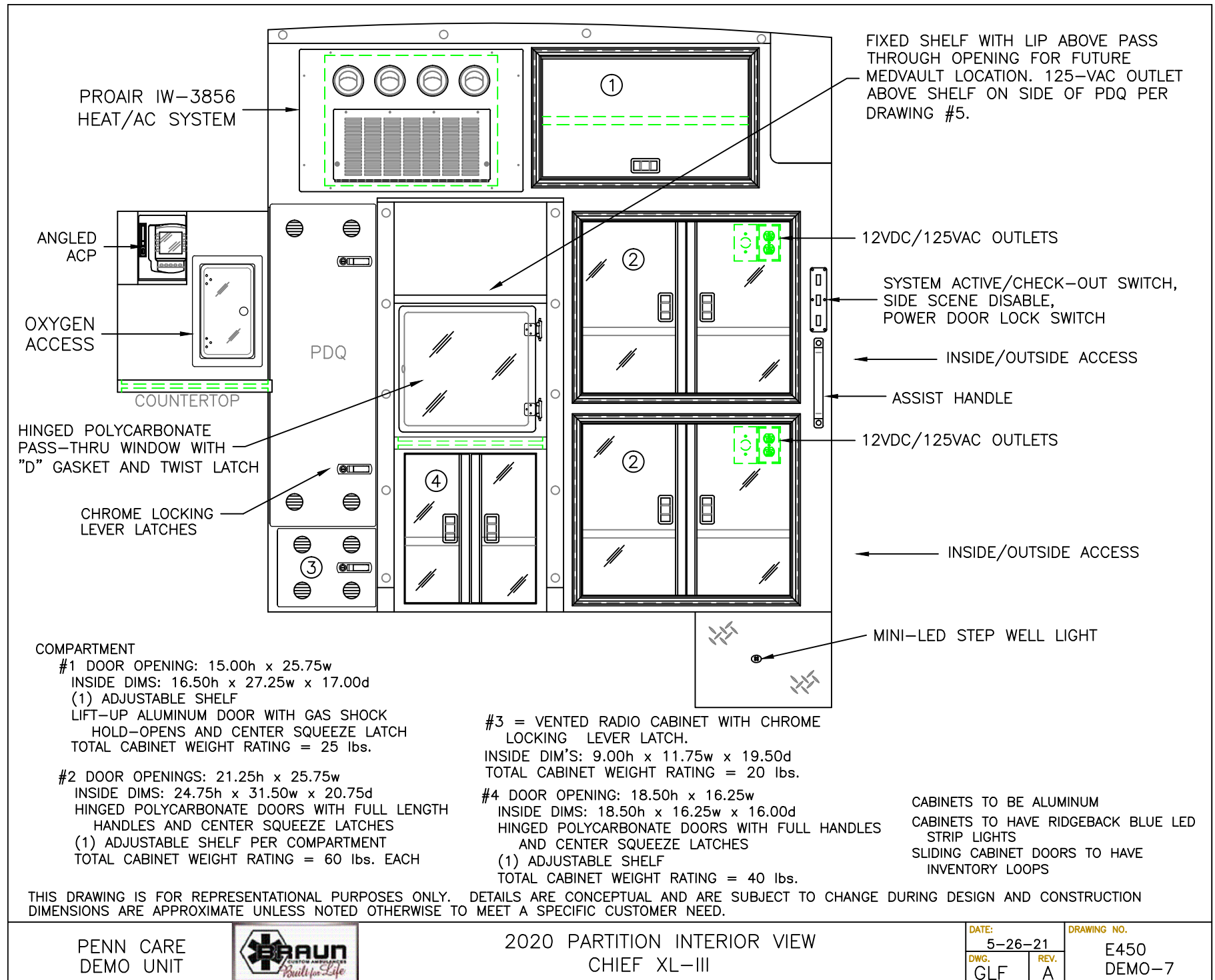
PENN CARE
 DEMO UNIT



2020 CURBSIDE INTERIOR VIEW
 CHIEF XL-III

DATE:
 5-26-21
 DWG.
 GLF
 REV.
 A

DRAWING NO.
 E450
 DEMO-6



PENN CARE
DEMO UNIT



2020 PARTITION INTERIOR VIEW
CHIEF XL-III

DATE: 5-26-21		DRAWING NO. E450	
DWG. GLF	REV. A	DEMO-7	

END VIEW OF BENCH AREA:

LUMALIER ADU-136 UV-C LIGHT

AMBER MINI-LED
INSIDE TOP/BOTTOM
OF DOORS

STAINLESS
STEEL V-BARS

ALUMINUM PANEL
WITH LATCH ACCESS

ALUMINUM PANEL
WITH LATCH ACCESS

(2) FERNO #521 HOLDERS
FOR "D" OXYGEN BOTTLES

RED/WHITE REFLECTIVE STRIP
ON INSIDE OF EACH DOOR

THIS DRAWING IS FOR REPRESENTATIONAL PURPOSES ONLY. DETAILS ARE CONCEPTUAL AND ARE SUBJECT TO CHANGE DURING DESIGN AND CONSTRUCTION
DIMENSIONS ARE APPROXIMATE UNLESS NOTED OTHERWISE TO MEET A SPECIFIC CUSTOMER NEED.

PENN CARE
DEMO UNIT

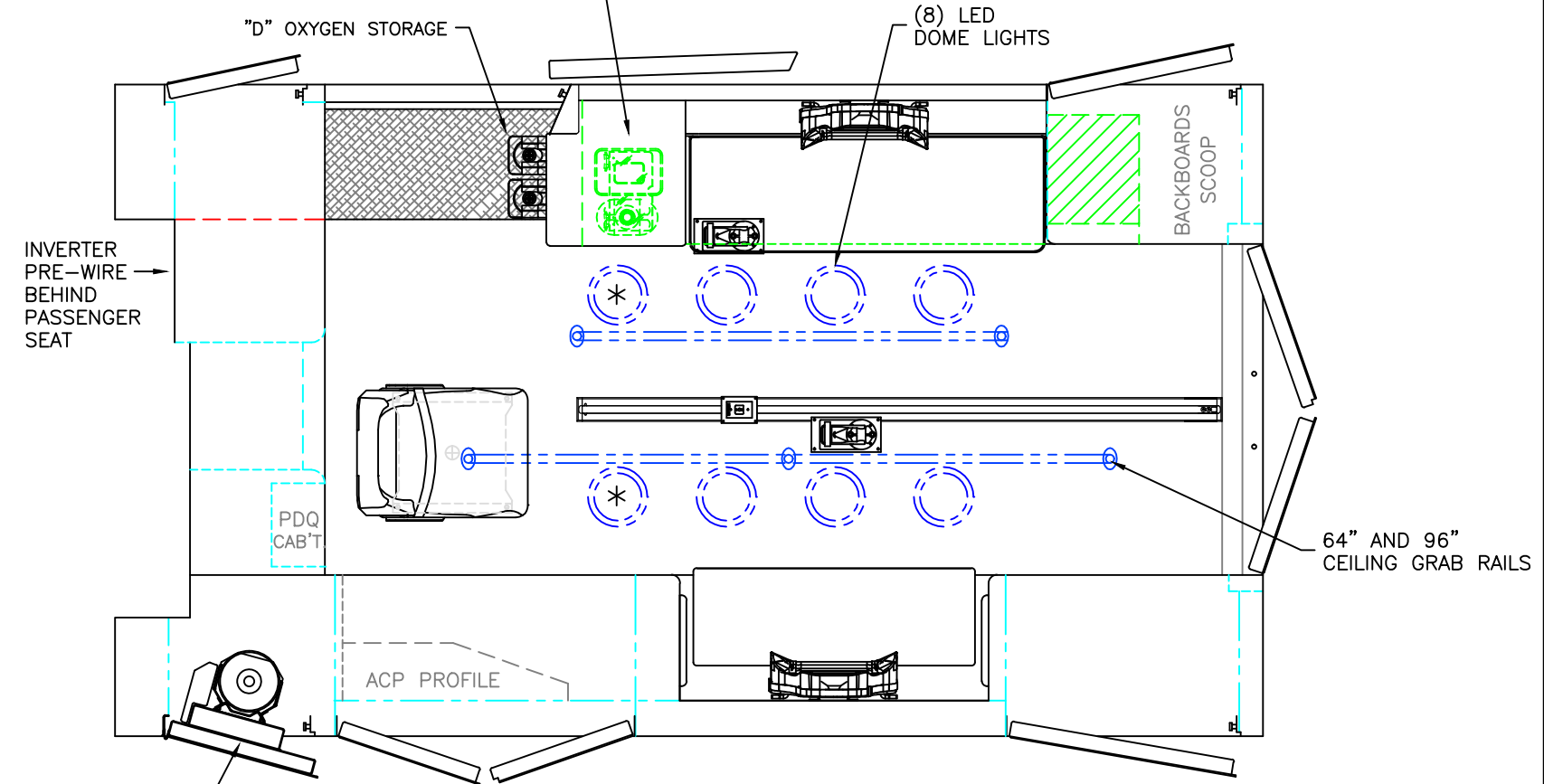


2020 REAR INTERIOR VIEW
CHIEF XL-III

DATE:
5-26-21
DWG. GLF
REV. A

DRAWING NO.
E450
DEMO-8

BELOW COUNTERTOP/DRAWER:
SHARPS/WASTE DRAWER IN BENCH BASE
THAT PULLS OUT INTO AISLE. HINGED
ACRYLIC LID ON TOP OF BENCH. 8-QUART
WASTE, 3.3-QUART SHARPS CONTAINERS.



 = (2) RECESSED CEILING IV HANGER LOCATIONS

 = (1) CEILING OXYGEN OUTLET

* = (2) ANTENNA BASES LOCATED OUTBOARD OF
DOME LIGHTS WITH COAX SERVICE LOOP

FERNO UNIVERSAL FLOOR PLATE FOR COT, SHOWN IN CENTER POSITION

MODULE WIDTH = 96"
MODULE LENGTH = 169"
MODULE HEAD ROOM = 72"

THIS DRAWING IS FOR REPRESENTATIONAL PURPOSES ONLY. DETAILS ARE CONCEPTUAL AND ARE SUBJECT TO CHANGE DURING DESIGN AND CONSTRUCTION
DIMENSIONS ARE APPROXIMATE UNLESS NOTED OTHERWISE TO MEET A SPECIFIC CUSTOMER NEED.

PENNCARE
DEMO



2020 FLOOR INTERIOR VIEW
CHIEF XL-III

DATE:
5-26-21
DWG. GLF REV. B

DRAWING NO.
E450
DEMO-9