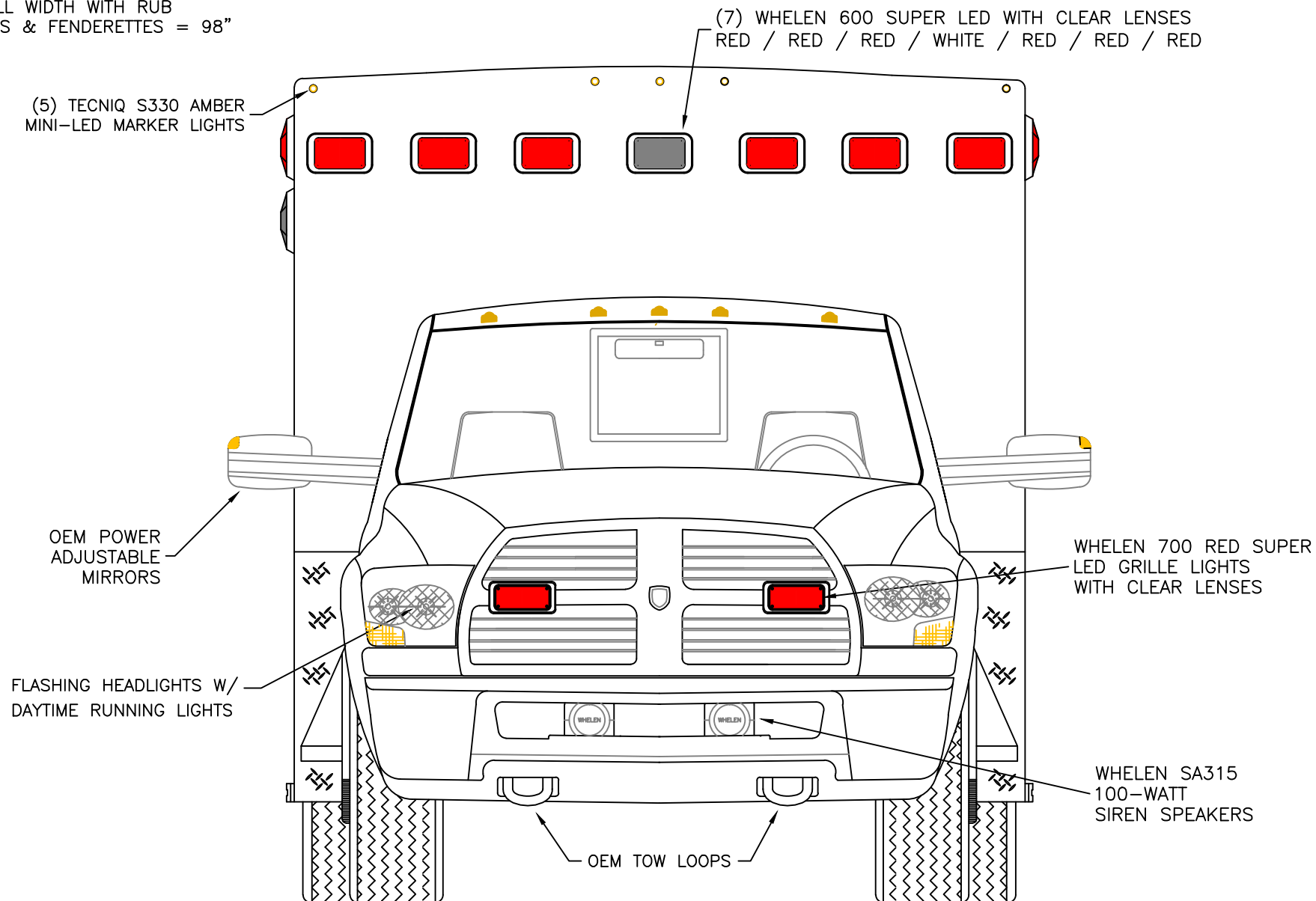


DIMENSIONS FOR OVERALL HEIGHT AND LENGTH ARE APPROXIMATE

OVERALL HEIGHT = 109.75"

OVERALL WIDTH WITH RUB

RAILS & FENDERETTES = 98"



THIS DRAWING IS FOR REPRESENTATIONAL PURPOSES ONLY. DETAILS ARE CONCEPTUAL AND ARE SUBJECT TO CHANGE DURING DESIGN AND CONSTRUCTION
DIMENSIONS ARE APPROXIMATE UNLESS NOTED OTHERWISE TO MEET A SPECIFIC CUSTOMER NEED.



2015 FRONT EXTERIOR VIEW
BRAUN LIBERTY TYPE-I / RAM 4500 CHASSIS

DATE:		10 OCT 13		DRAWING NO.
DWG.	AAB	REV.	NR	
1:17				LIB-R4500-1

DIMENSIONS FOR OVERALL HEIGHT AND LENGTH ARE APPROXIMATE
 OVERALL HEIGHT = 109.75"
 OVERALL WIDTH WITH RUB
 RAILS & FENDERETTES = 98"

(5) WHELEN 600 SUPER LED WARNING LIGHTS WITH CLEAR LENSES,
 (2) WHELEN 600 CLEAR HALOGEN LOAD LIGHTS:
 RED / RED / LOAD / AMBER / LOAD / RED / RED

(5) TECNIQ S330 RED
 MINI-LED MARKER LIGHTS

LOCATION FOR
 DOOR GRABBERS

LED LICENSE
 PLATE LIGHT

MUD FLAPS

(1) EACH SIDE, WHELEN
 600 LED BRAKE/TAIL,
 600 LED TURN
 600 HALOGEN BACK-UP

INDEPENDENT BUMPER WITH
 NON-SKID FLIP-UP CENTER
 STEP AND COT PROTECTOR
 ON STEP EDGE. TOW HOOKS
 LOCATED BELOW STEP/BUMPER.

THIS DRAWING IS FOR REPRESENTATIONAL PURPOSES ONLY. DETAILS ARE CONCEPTUAL AND ARE SUBJECT TO CHANGE DURING DESIGN AND CONSTRUCTION
 DIMENSIONS ARE APPROXIMATE UNLESS NOTED OTHERWISE TO MEET A SPECIFIC CUSTOMER NEED.

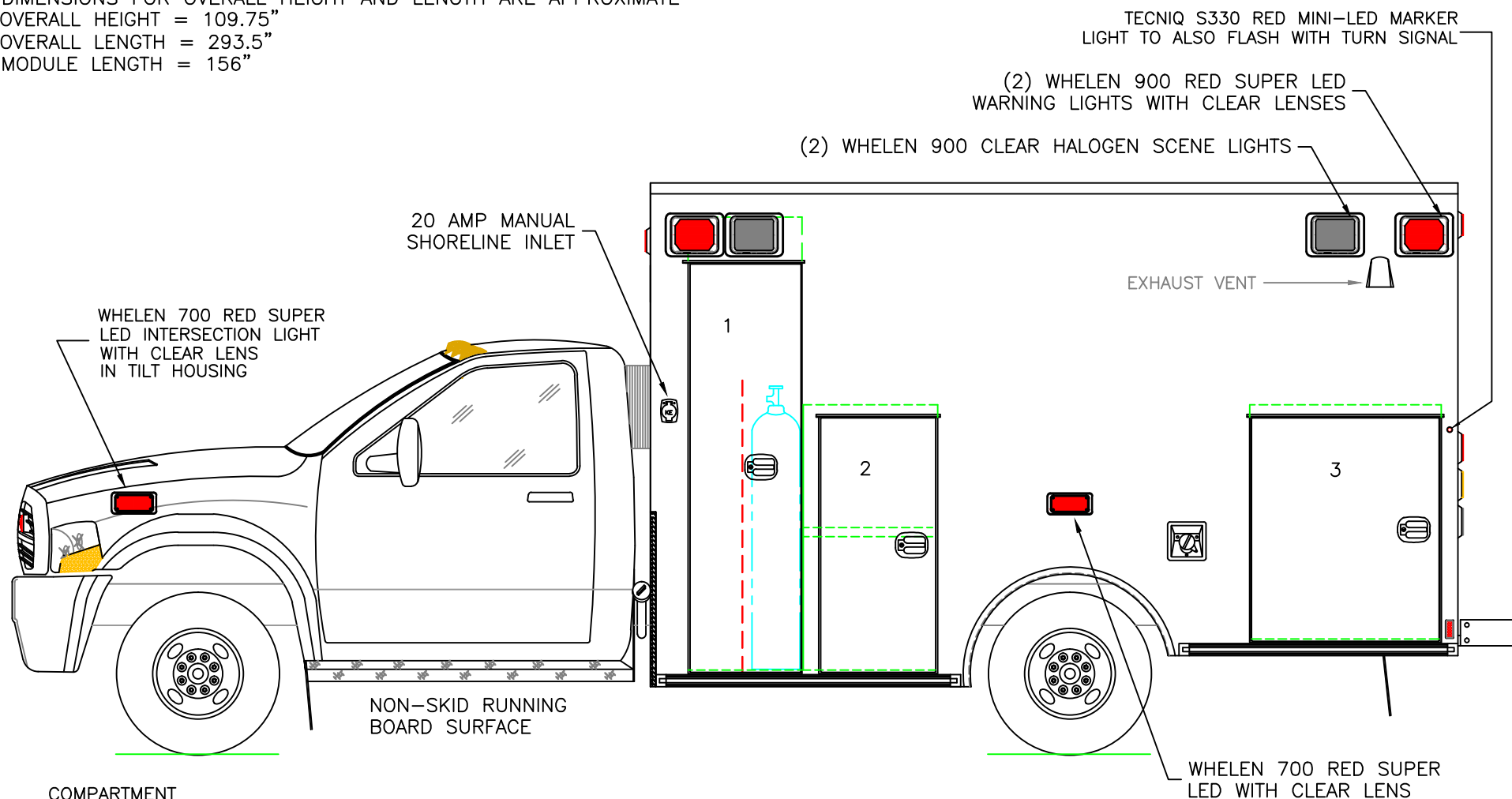


2015 REAR EXTERIOR VIEW
 BRAUN LIBERTY TYPE-I

DATE:
 10 OCT 13
 DWG. AAB REV. NR

DRAWING NO.
 LIB-R4500-2

DIMENSIONS FOR OVERALL HEIGHT AND LENGTH ARE APPROXIMATE
 OVERALL HEIGHT = 109.75"
 OVERALL LENGTH = 293.5"
 MODULE LENGTH = 156"



COMPARTMENT

O.S.S #1

CLEAR OPENING: 77.75h x 18.50w
 INSIDE DIM'S.: 87.50h x 22.00w x 20.75d
 BACKBOARD/SCOOP STORAGE WITH 56" TALL DIVIDER
 OXYGEN STORAGE REARWARD OF DIVIDER

O.S.S #2

CLEAR OPENING: 48.25h x 19.00w
 INSIDE DIM'S.: 51.25h x 24.00w x 20.75d
 (1) ADJUSTABLE SHELF

O.S.S #3

CLEAR OPENING: 42.25h x 33.25w
 INSIDE DIM'S.: 45.25h x 36.75w x 20.75d

THIS DRAWING IS FOR REPRESENTATIONAL PURPOSES ONLY. DETAILS ARE CONCEPTUAL AND ARE SUBJECT TO CHANGE DURING DESIGN AND CONSTRUCTION
 DIMENSIONS ARE APPROXIMATE UNLESS NOTED OTHERWISE TO MEET A SPECIFIC CUSTOMER NEED.

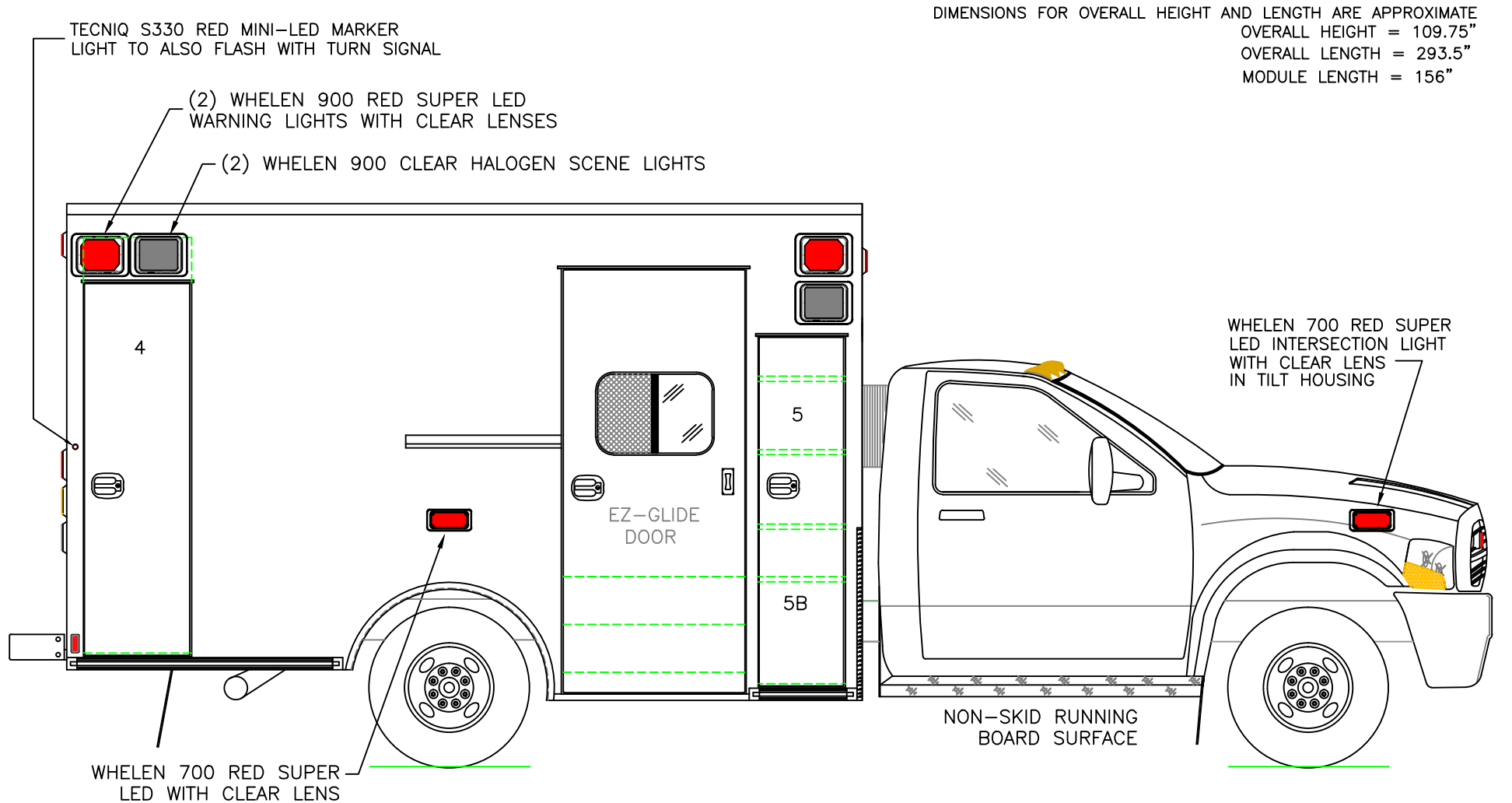


2015 STREETSIDE EXTERIOR VIEW
 BRAUN LIBERTY TYPE-I / RAM 4500 CHASSIS

1:28

DATE:
10 OCT 13
DWG. AAB
REV. NR

DRAWING NO.
LIB-R4500-3



COMPARTMENT

O.S.S #4

CLEAR OPENING: 71.75h x 17.75w
 INSIDE DIM'S.: 81.50h x 21.50w x 20.50d
 BACKBOARD/SCOOP STORAGE

O.S.S #5

CLEAR OPENING: 67.25h x 13.50w
 INSIDE DIM'S. 5A: SEE PARTITION INTERIOR VIEW
 INSIDE/OUTSIDE STORAGE WITH (3) ADJUSTABLE SHELVES
 INSIDE DIM'S. 5B: 20.00h x 16.00w x 17.50d

THIS DRAWING IS FOR REPRESENTATIONAL PURPOSES ONLY. DETAILS ARE CONCEPTUAL AND ARE SUBJECT TO CHANGE DURING DESIGN AND CONSTRUCTION
 DIMENSIONS ARE APPROXIMATE UNLESS NOTED OTHERWISE TO MEET A SPECIFIC CUSTOMER NEED.

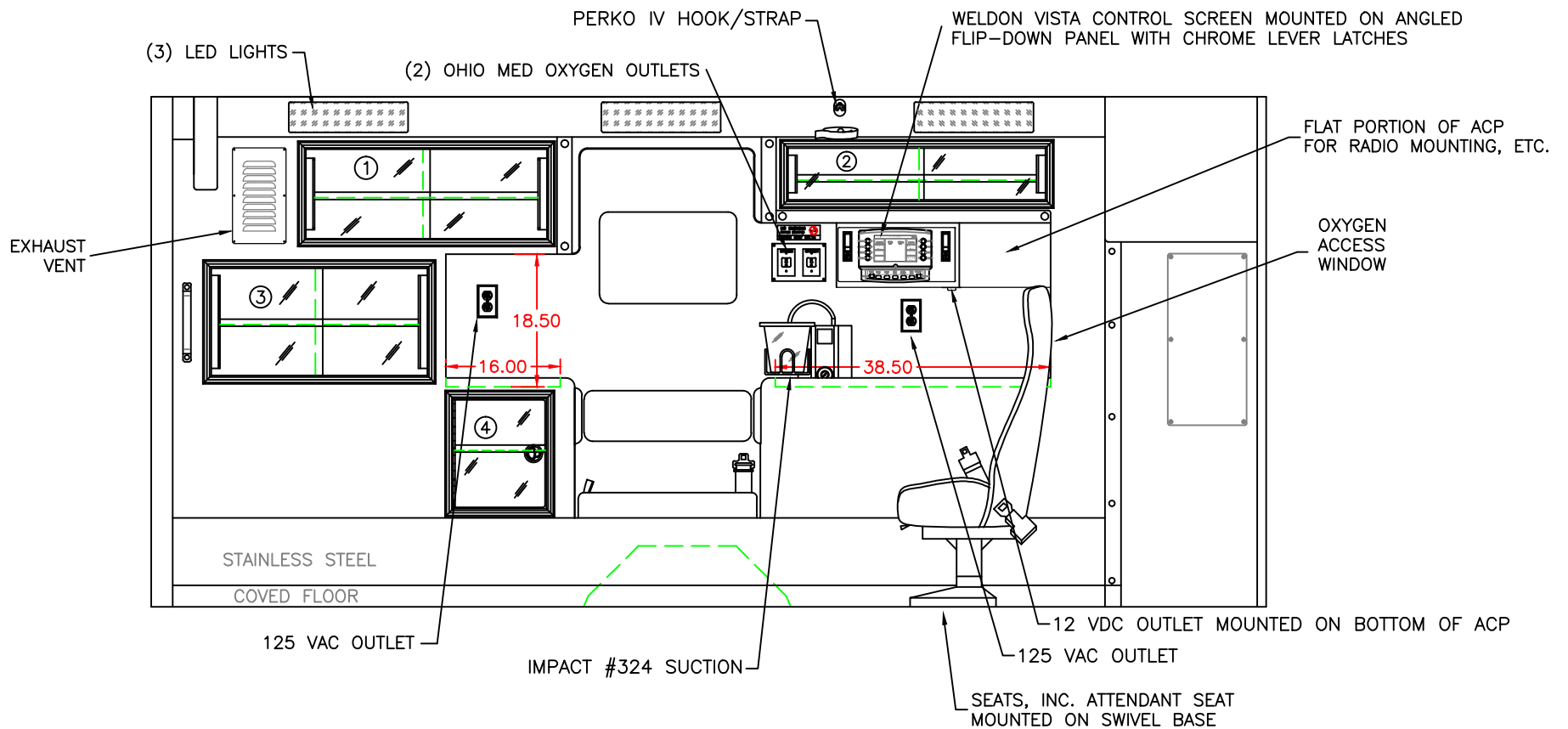


2015 CURBSIDE EXTERIOR VIEW
 BRAUN LIBERTY TYPE-I / RAM 4500 CHASSIS

1:28

DATE:
10 OCT 13
DWG. AAB
REV. NR

DRAWING NO.
LIB-R4500-4



COMPARTMENT

#1 DOOR OPENING: 12.50h x 33.75w
 INSIDE DIMS: 14.25h x 35.50w x 17.25d
 (1) ADJUSTABLE SHELF

#2 DOOR OPENING: 7.25h x 36.00w
 INSIDE DIMS: 9.00h x 37.75w x 17.25d
 (1) ADJUSTABLE SHELF

#3 DOOR OPENING: 15.00h x 30.25w
 INSIDE DIMS: 17.75h x 32.00w x 17.25d
 (1) ADJUSTABLE SHELF

#4 DOOR OPENING: 15.25h x 13.25w
 INSIDE DIMS: 17.00h x 15.00w x 17.25d
 (1) ADJUSTABLE SHELF
 LEFT-HINGED ACRYLIC DOOR
 (1) LOCKING STAINLESS STEEL FLUSH PULL LATCH

CABINETS TO BE ALUMINUM

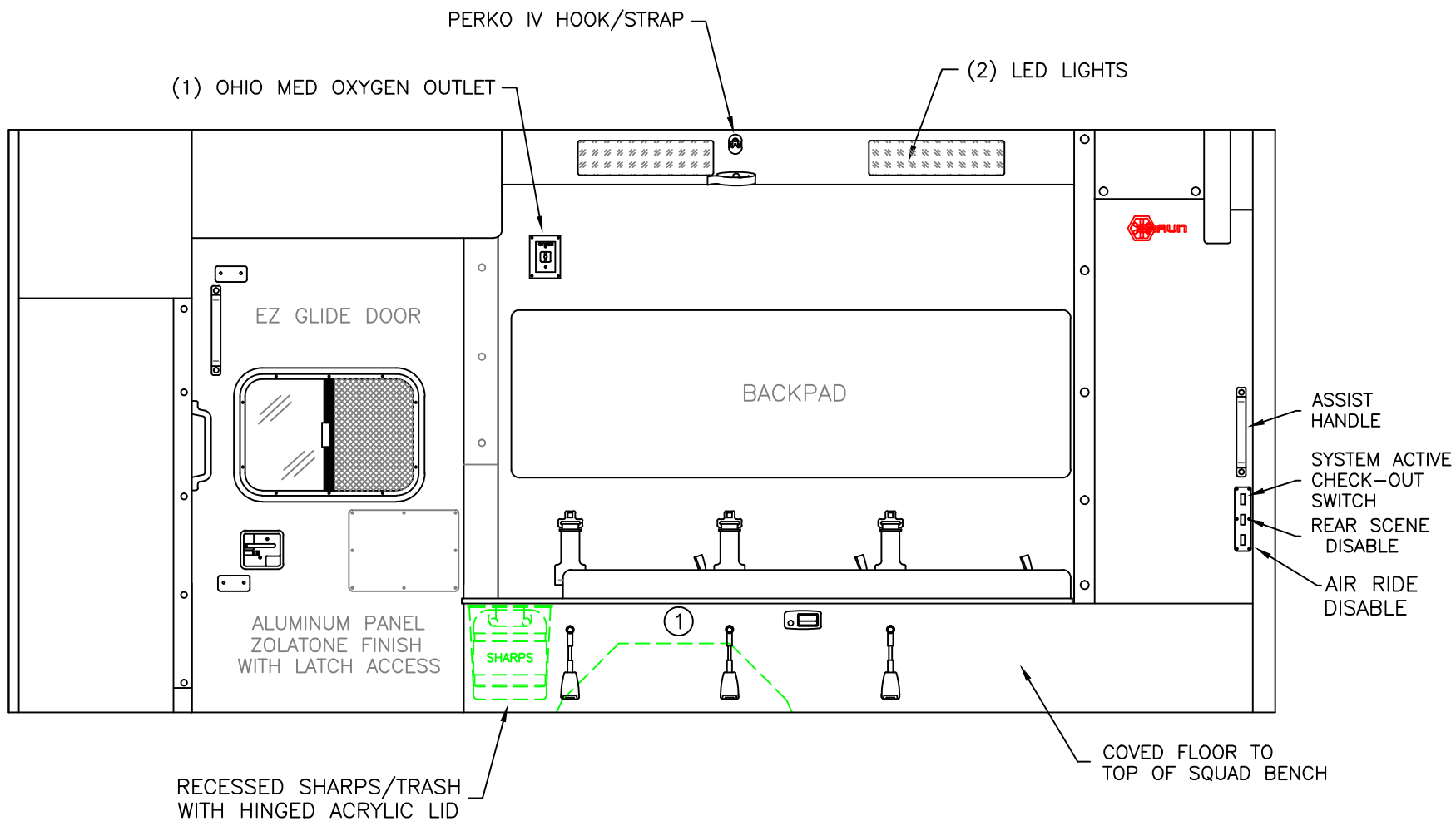
THIS DRAWING IS FOR REPRESENTATIONAL PURPOSES ONLY. DETAILS ARE CONCEPTUAL AND ARE SUBJECT TO CHANGE DURING DESIGN AND CONSTRUCTION
 DIMENSIONS ARE APPROXIMATE UNLESS NOTED OTHERWISE TO MEET A SPECIFIC CUSTOMER NEED.



2015 STREETSIDE INTERIOR VIEW
 BRAUN LIBERTY TYPE-I

DATE:	10 OCT 13		DRAWING NO.
DWG.	AAB	REV.	NR
			LIB-R4500-5

1:20



#1 INSIDE DIM'S.: 14.50h x 74.75w x 20.00d

CABINETS TO BE ALUMINUM

THIS DRAWING IS FOR REPRESENTATIONAL PURPOSES ONLY. DETAILS ARE CONCEPTUAL AND ARE SUBJECT TO CHANGE DURING DESIGN AND CONSTRUCTION DIMENSIONS ARE APPROXIMATE UNLESS NOTED OTHERWISE TO MEET A SPECIFIC CUSTOMER NEED.

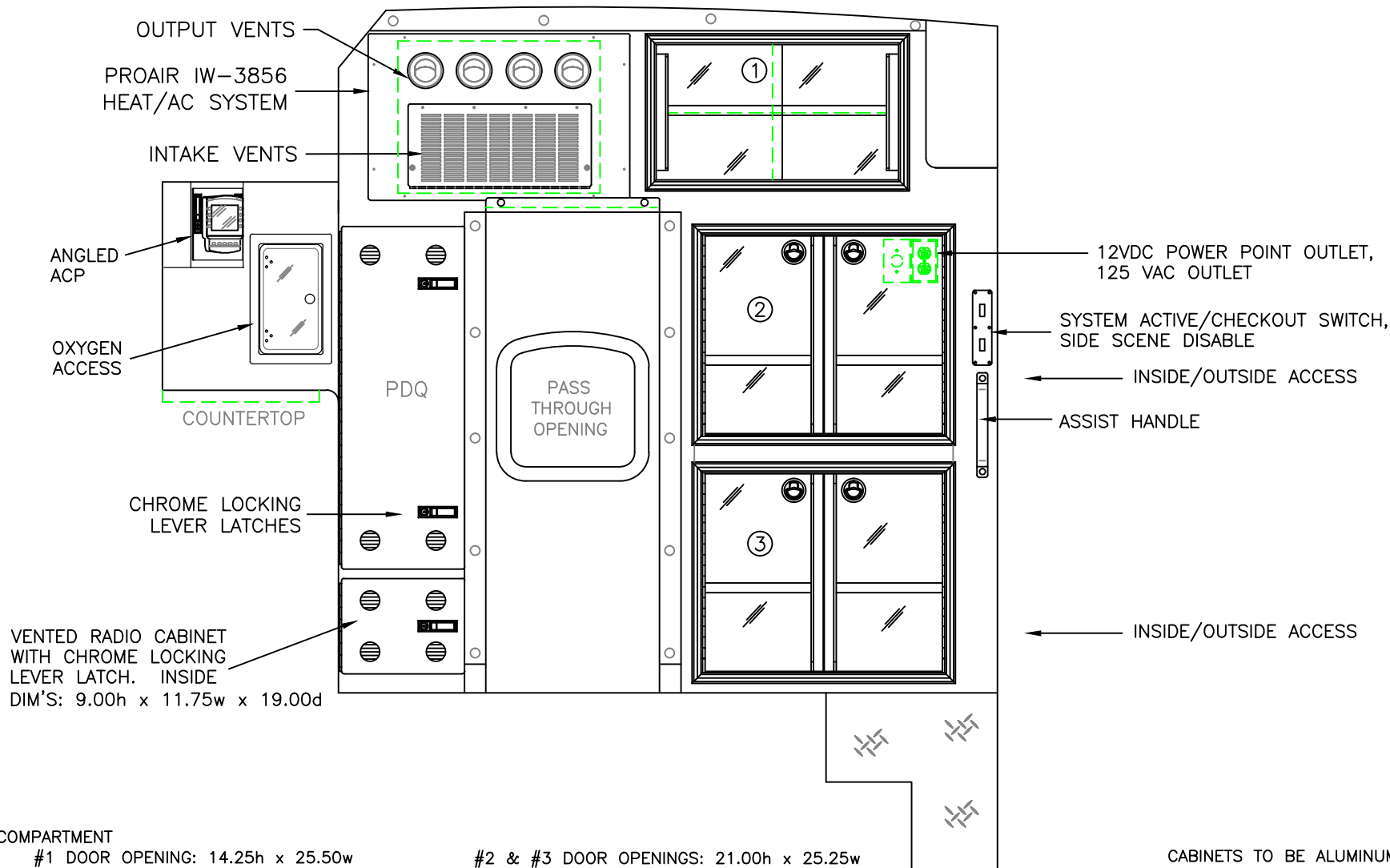


2015 CURBSIDE INTERIOR VIEW
BRAUN LIBERTY TYPE-I

1:18

DATE:	10 OCT 13
DWG.	REV.
AAB	NR

DRAWING NO.
LIB-R4500-6

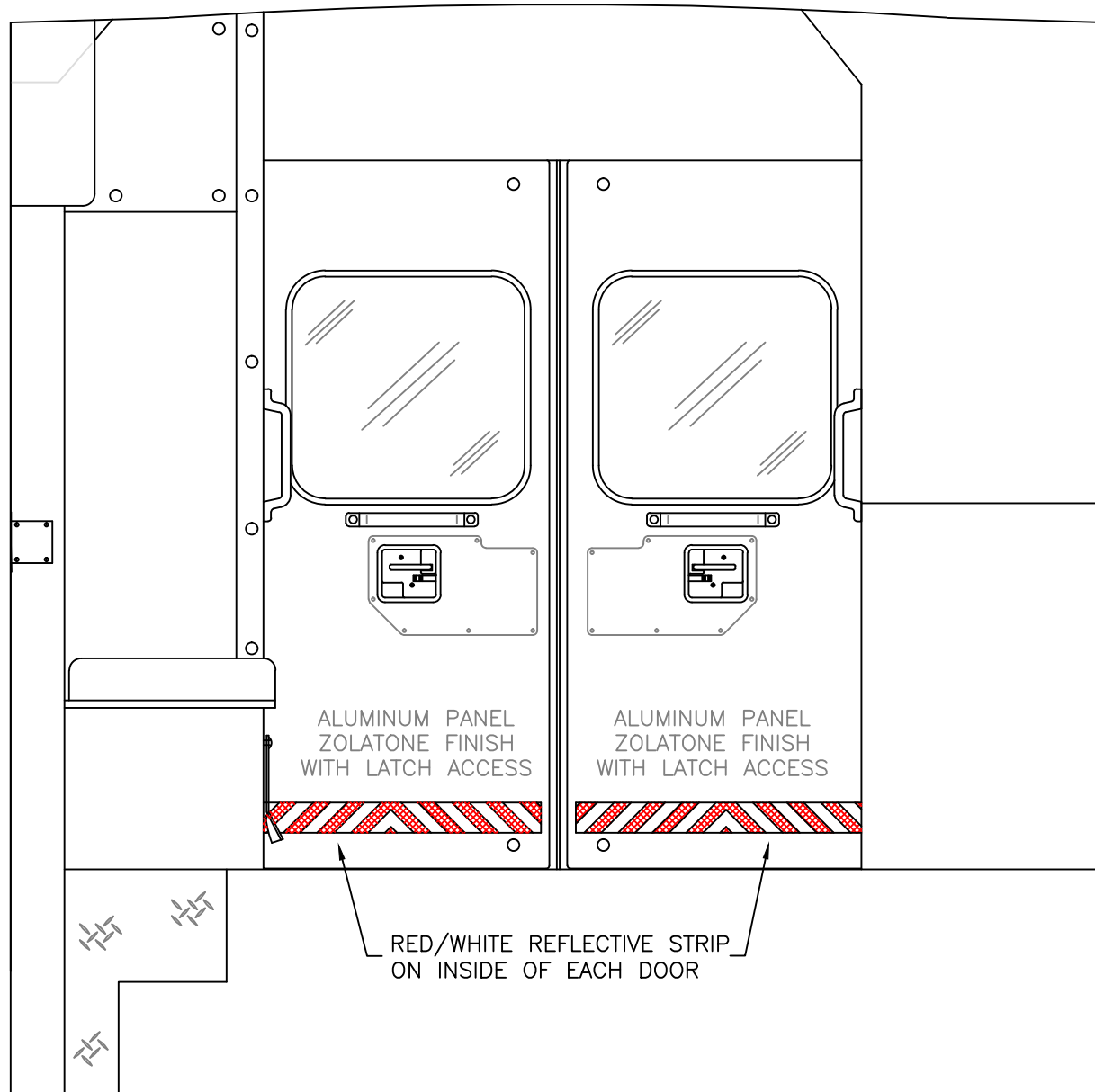


THIS DRAWING IS FOR REPRESENTATIONAL PURPOSES ONLY. DETAILS ARE CONCEPTUAL AND ARE SUBJECT TO CHANGE DURING DESIGN AND CONSTRUCTION
DIMENSIONS ARE APPROXIMATE UNLESS NOTED OTHERWISE TO MEET A SPECIFIC CUSTOMER NEED.



2015 PARTITION INTERIOR VIEW
BRAUN LIBERTY TYPE-I

DATE:	10 OCT 13	DRAWING NO.	LIB-R4500-7
DWG.	AAB	REV.	NR



THIS DRAWING IS FOR REPRESENTATIONAL PURPOSES ONLY. DETAILS ARE CONCEPTUAL AND ARE SUBJECT TO CHANGE DURING DESIGN AND CONSTRUCTION
DIMENSIONS ARE APPROXIMATE UNLESS NOTED OTHERWISE TO MEET A SPECIFIC CUSTOMER NEED.

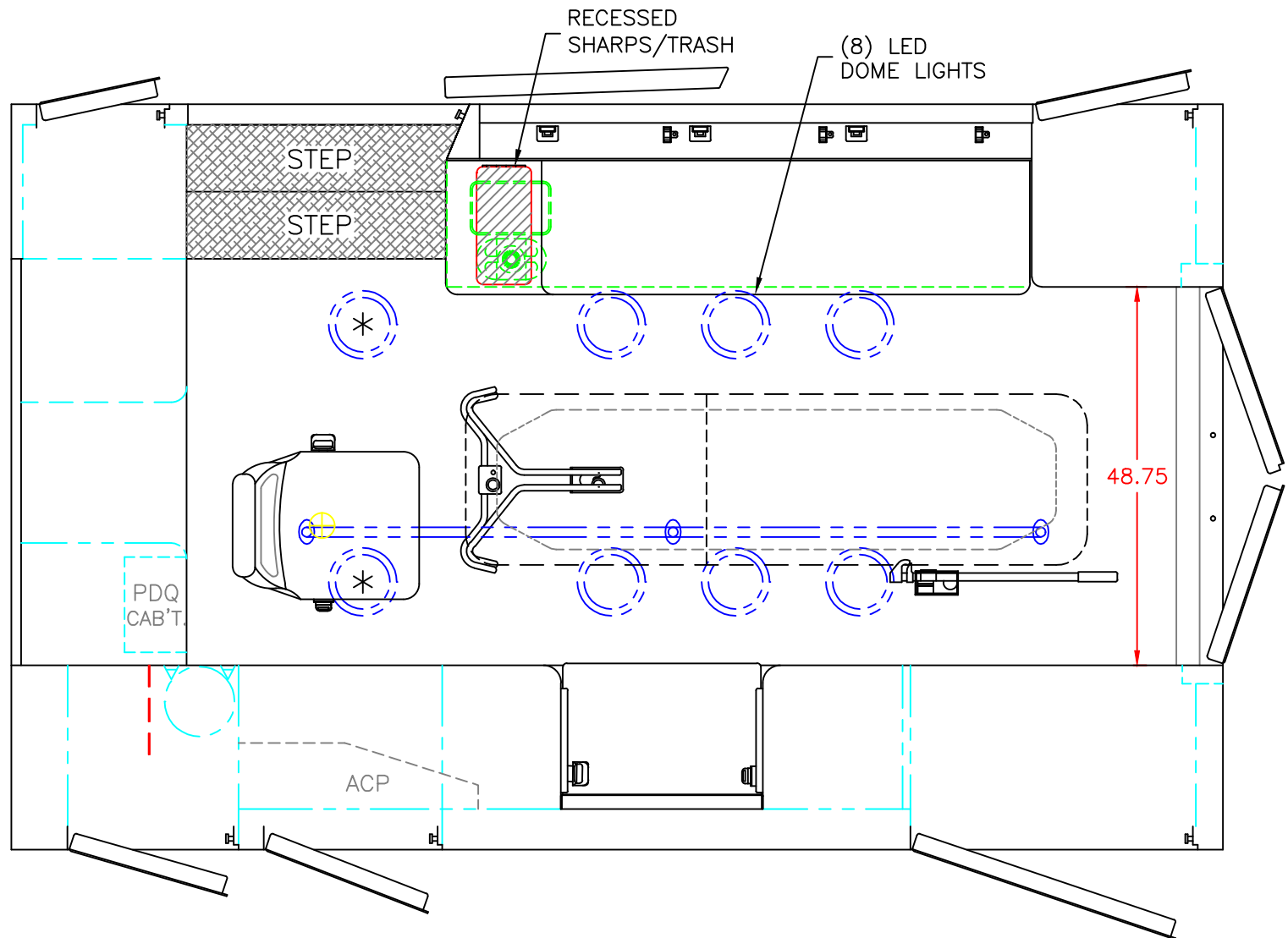


2015 REAR INTERIOR VIEW
BRAUN LIBERTY TYPE-I

1:12

DATE:	10 OCT 13
DWG.	AAB NR

DRAWING NO.	LIB-R4500-8
-------------	-------------



* (2) ANTENNA BASES LOCATED OUTBOARD OF DOME LIGHTS WITH COAX SERVICE LOOP

STRYKER CENTER MOUNT COT HARDWARE

MODULE WIDTH = 96"

MODULE LENGTH = 156"

MODULE HEAD ROOM = 72"

THIS DRAWING IS FOR REPRESENTATIONAL PURPOSES ONLY. DETAILS ARE CONCEPTUAL AND ARE SUBJECT TO CHANGE DURING DESIGN AND CONSTRUCTION
DIMENSIONS ARE APPROXIMATE UNLESS NOTED OTHERWISE TO MEET A SPECIFIC CUSTOMER NEED.



2015 FLOOR INTERIOR VIEW
BRAUN LIBERTY TYPE-I

DATE: 10 OCT 13		DRAWING NO. LIB-R4500-9
DWG. AAB	REV. NR	

1:20