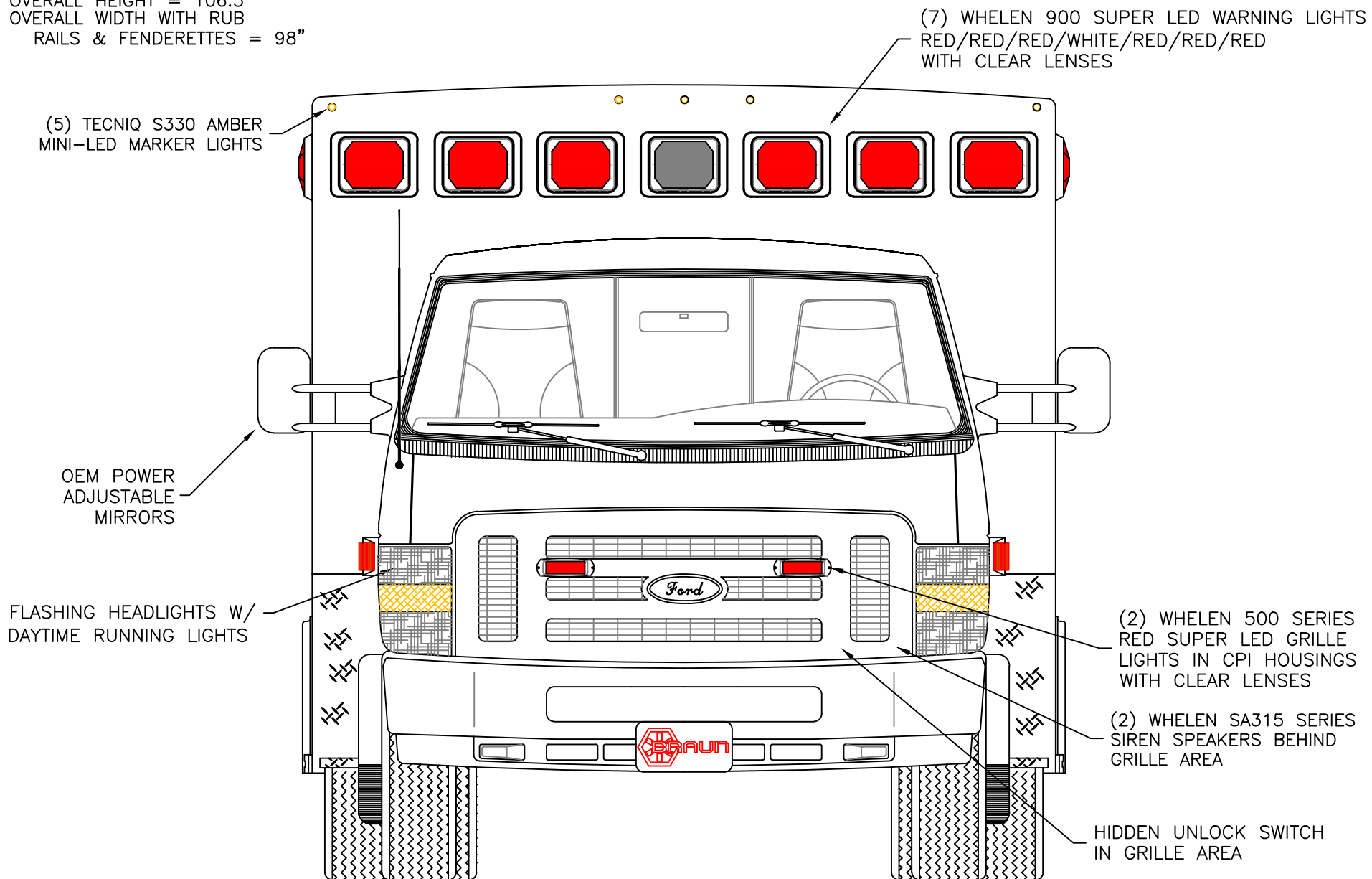


DIMENSIONS FOR OVERALL HEIGHT AND LENGTH ARE APPROXIMATE

OVERALL HEIGHT = 106.5"

OVERALL WIDTH WITH RUB

RAILS & FENDERETTES = 98"



THIS DRAWING IS FOR REPRESENTATIONAL PURPOSES ONLY. DETAILS ARE CONCEPTUAL AND ARE SUBJECT TO CHANGE DURING DESIGN AND CONSTRUCTION
DIMENSIONS ARE APPROXIMATE UNLESS NOTED OTHERWISE TO MEET A SPECIFIC CUSTOMER NEED.



2015 FRONT EXTERIOR VIEW
CHIEF XL-III/FORD E-450 CHASSIS-GAS ENGINE

1:17

DATE:
04 OCT 13
DWG.
AAB

REV.
NR

DRAWING NO.
15XLE450-1

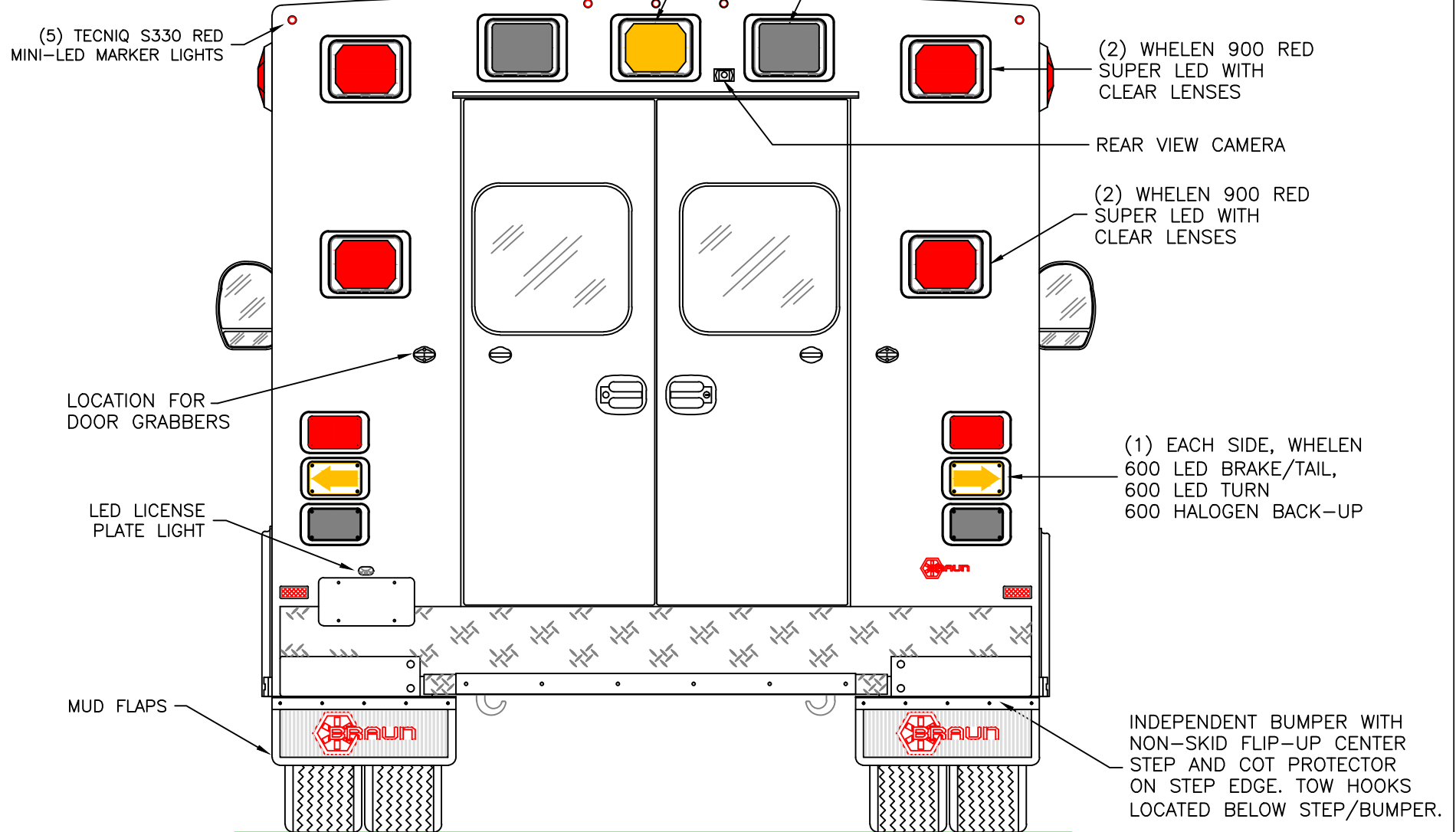
DIMENSIONS FOR OVERALL HEIGHT AND LENGTH ARE APPROXIMATE

OVERALL HEIGHT = 106.5"

OVERALL WIDTH WITH RUB

RAILS & FENDERETTES = 98"

FLOOR HEIGHT = 33"



THIS DRAWING IS FOR REPRESENTATIONAL PURPOSES ONLY. DETAILS ARE CONCEPTUAL AND ARE SUBJECT TO CHANGE DURING DESIGN AND CONSTRUCTION
DIMENSIONS ARE APPROXIMATE UNLESS NOTED OTHERWISE TO MEET A SPECIFIC CUSTOMER NEED.

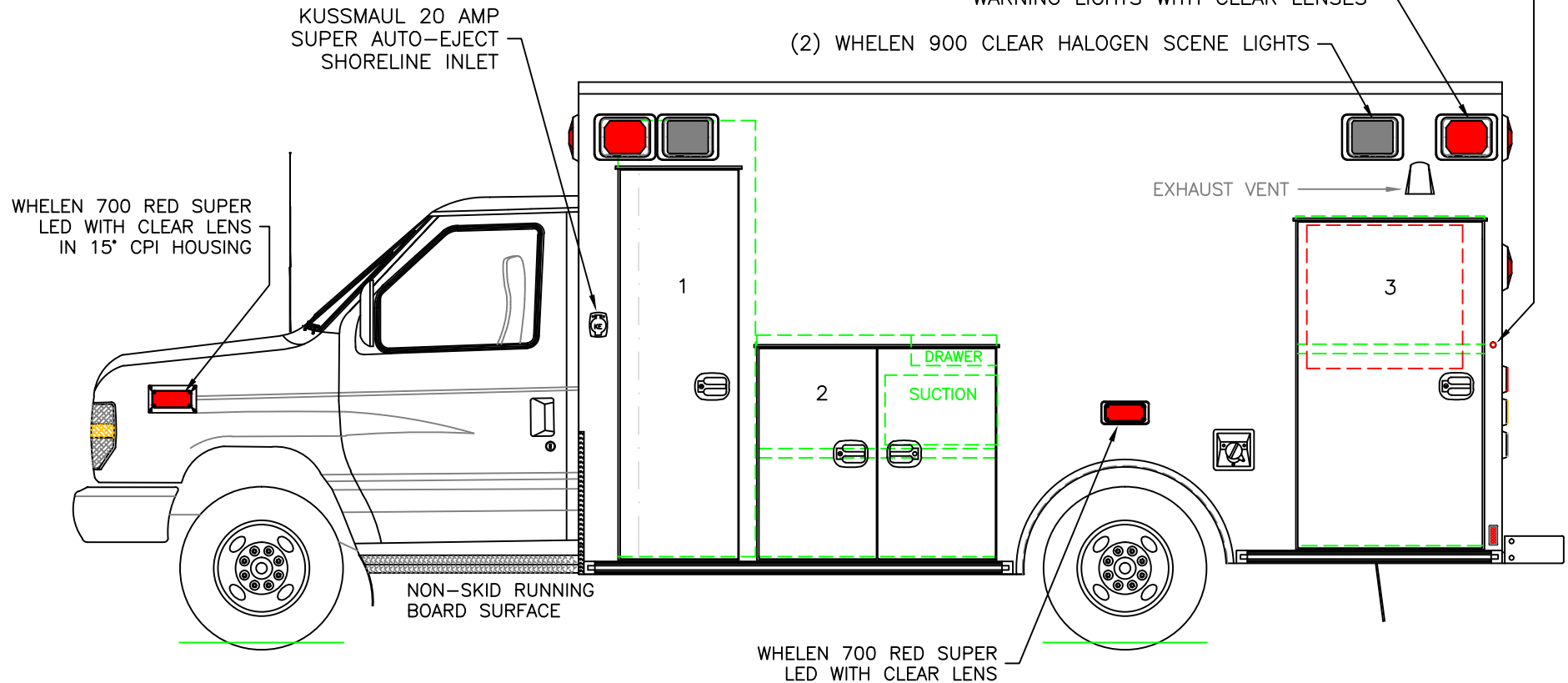


2015 REAR EXTERIOR VIEW
CHIEF XL-III/FORD E-450 CHASSIS

DATE:	04 OCT 13	DRAWING NO.	15XLE450-2
DWG.	AAB	REV.	

DIMENSIONS FOR OVERALL HEIGHT AND LENGTH ARE APPROXIMATE
 OVERALL HEIGHT = 106.5"
 OVERALL LENGTH = 272.75"
 MODULE LENGTH = 169"

TECNIQ S330 RED MINI-LED MARKER
 LIGHT TO ALSO FLASH WITH TURN SIGNAL



COMPARTMENT

O.S.S #1

CLEAR OPENING: 70.00h x 18.25w
 INSIDE DIM'S.: 79.75h x 24.25w x 20.75d
 BACKBOARD/SCOOP STORAGE

O.S.S #2

CLEAR OPENING: 37.50h x 38.50w
 INSIDE DIM'S.: 40.50h x 43.75w x 20.75d
 (1) ADJUSTABLE SHELF

O.S.S #3

CLEAR OPENING: 58.50h x 30.75w
 INSIDE DIM'S.: 60.25h x 34.50w x 20.75d
 INSIDE/OUTSIDE ACCESS
 (1) ADJUSTABLE SHELF

THIS DRAWING IS FOR REPRESENTATIONAL PURPOSES ONLY. DETAILS ARE CONCEPTUAL AND ARE SUBJECT TO CHANGE DURING DESIGN AND CONSTRUCTION
 DIMENSIONS ARE APPROXIMATE UNLESS NOTED OTHERWISE TO MEET A SPECIFIC CUSTOMER NEED.



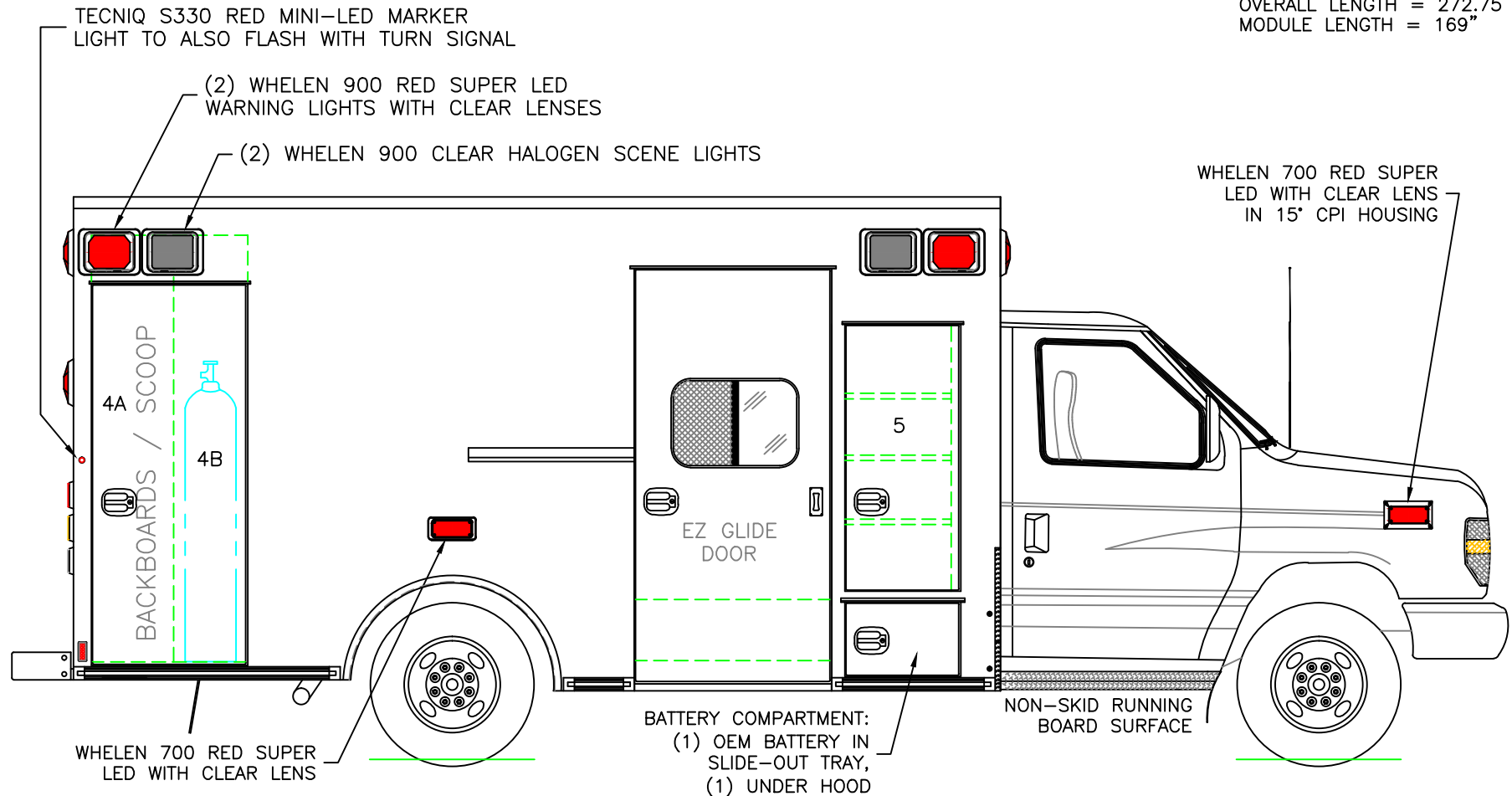
2015 STREETSIDE EXTERIOR VIEW
 CHIEF XL-III/FORD E-450 CHASSIS

DATE:
 04 OCT 13
 DWG. AAB
 REV. NR

DRAWING NO.
 15XLE450-3

1:28

DIMENSIONS FOR OVERALL HEIGHT AND LENGTH ARE APPROXIMATE
 OVERALL HEIGHT = 106.5"
 OVERALL LENGTH = 272.75"
 MODULE LENGTH = 169"



COMPARTMENT
 O.S.S #4

CLEAR OPENING: 68.00h x 24.75w
 INSIDE DIM'S. 4A: 77.75h x 15.00w x 20.75d
 BACKBOARD/SCOOP STORAGE

INSIDE DIM'S. 4B: 77.75h x 13.50w x 12.00d
 MAIN OXYGEN STORAGE

O.S.S #5

CLEAR OPENING: 46.75h x 17.25w
 INSIDE DIM'S. 5: SEE PARTITION INTERIOR VIEW
 INSIDE/OUTSIDE ACCESS WITH (3) ADJUSTABLE SHELVES

THIS DRAWING IS FOR REPRESENTATIONAL PURPOSES ONLY. DETAILS ARE CONCEPTUAL AND ARE SUBJECT TO CHANGE DURING DESIGN AND CONSTRUCTION
 DIMENSIONS ARE APPROXIMATE UNLESS NOTED OTHERWISE TO MEET A SPECIFIC CUSTOMER NEED.

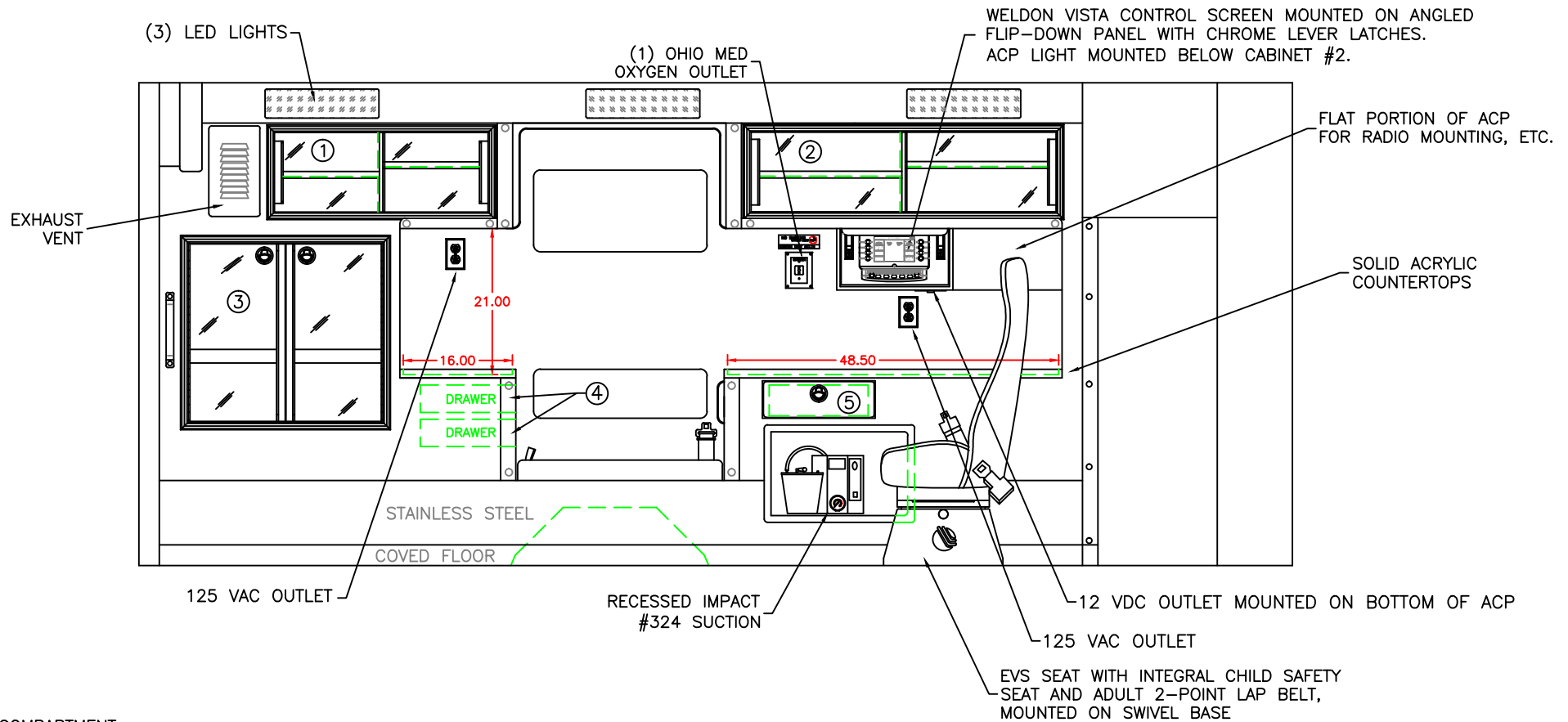


2015 CURBSIDE EXTERIOR VIEW
 CHIEF XL-III/FORD E-450 CHASSIS

1:28

DATE:
 04 OCT 13
 DWG. AAB
 REV. NR

DRAWING NO.
 15XLE450-4



COMPARTMENT

#1 DOOR OPENING: 11.50h x 31.25w
 INSIDE DIMS: 13.25h x 33.00w x 17.25d
 (1) ADJ SHELF EACH SIDE OF CENTER DIVIDER
 SLIDING ACRYLIC CABINET DOORS

#2 DOOR OPENING: 11.50h x 44.50w
 INSIDE DIMS: 13.25h x 46.25w x 17.25d
 (1) ADJ SHELF EACH SIDE OF CENTER DIVIDER
 SLIDING ACRYLIC CABINET DOORS

#3 DOOR OPENING: 26.25h x 28.50w
 INSIDE DIMS: O.S.S. #3
 RECESSED .375" ACRYLIC DOORS WITH FULL LENGTH HANDLES
 LOCKING STAINLESS STEEL FLUSH PULL LATCHES

#4 = TWO DRAWERS THAT PULL-OUT TOWARD CPR SEAT
 INSIDE DIMS: 3.50h x 9.00w x 12.00d
 LOCKING STAINLESS STEEL FLUSH PULL LATCHES

#5 PULL-OUT DRAWER WITH HINGED ACRYLIC WRITING SURFACE
 INSIDE DIMS: 4.50h x 14.50w x 13.25d
 LOCKING STAINLESS STEEL FLUSH PULL LATCH

CABINETS TO BE ALUMINUM

THIS DRAWING IS FOR REPRESENTATIONAL PURPOSES ONLY. DETAILS ARE CONCEPTUAL AND ARE SUBJECT TO CHANGE DURING DESIGN AND CONSTRUCTION
 DIMENSIONS ARE APPROXIMATE UNLESS NOTED OTHERWISE TO MEET A SPECIFIC CUSTOMER NEED.

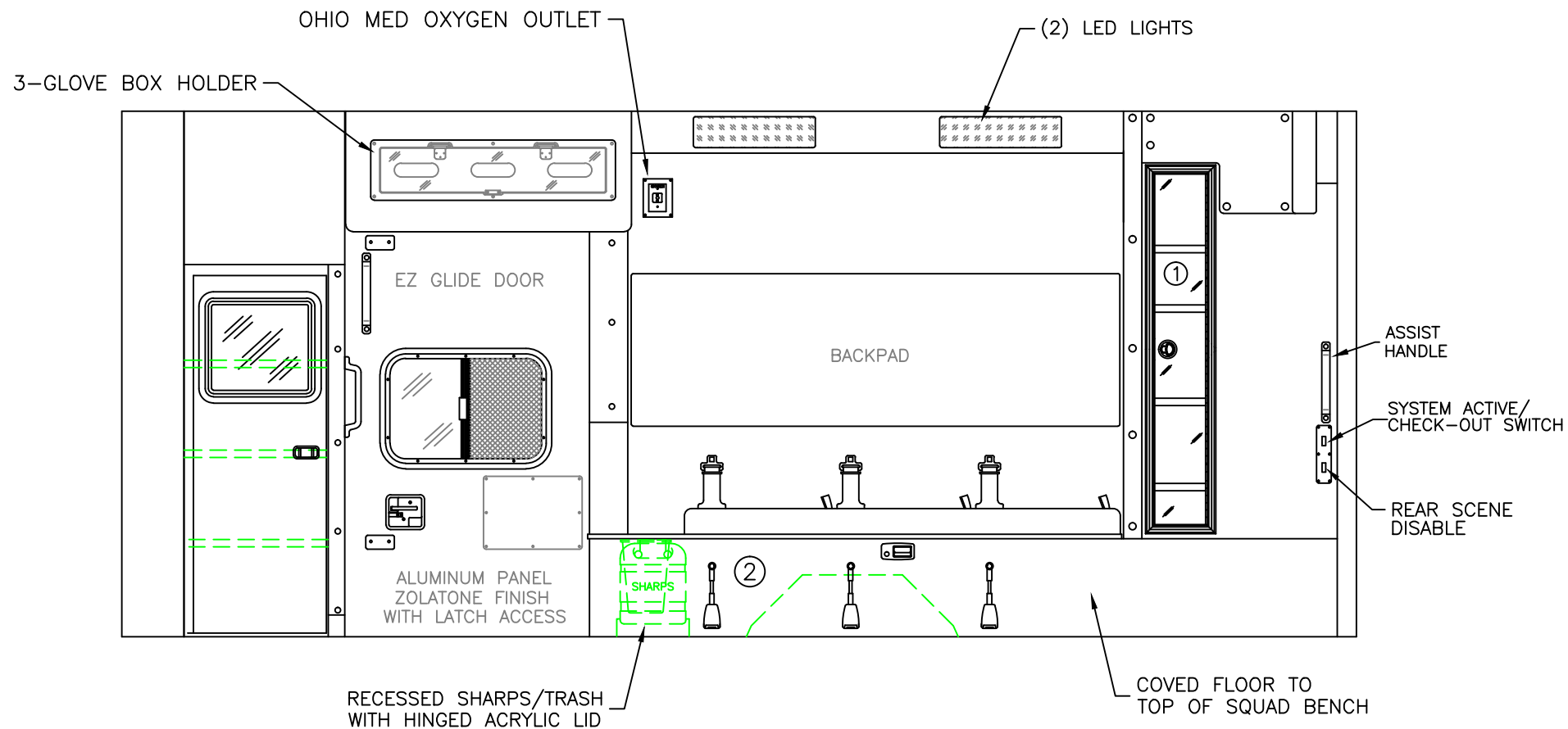


2015 STREETSIDE INTERIOR VIEW
 CHIEF XL-III

1:22

DATE:
04 OCT 13
DWG. AAB REV. NR

DRAWING NO.
15XLE450-5



COMPARTMENT

- #1 DOOR OPENING: 48.00h x 7.25w
 INSIDE DIMS: 50.00h x 11.50w x 7.50d
 RECESSED .375" ACRYLIC DOOR
 (1) LOCKING STAINLESS STEEL FLUSH PULL LATCH
 (4) ADJUSTABLE SHELVES

#2 INSIDE DIM'S: 14.25h x 72.00w x 21.00d

CABINETS TO BE ALUMINUM

THIS DRAWING IS FOR REPRESENTATIONAL PURPOSES ONLY. DETAILS ARE CONCEPTUAL AND ARE SUBJECT TO CHANGE DURING DESIGN AND CONSTRUCTION
 DIMENSIONS ARE APPROXIMATE UNLESS NOTED OTHERWISE TO MEET A SPECIFIC CUSTOMER NEED.

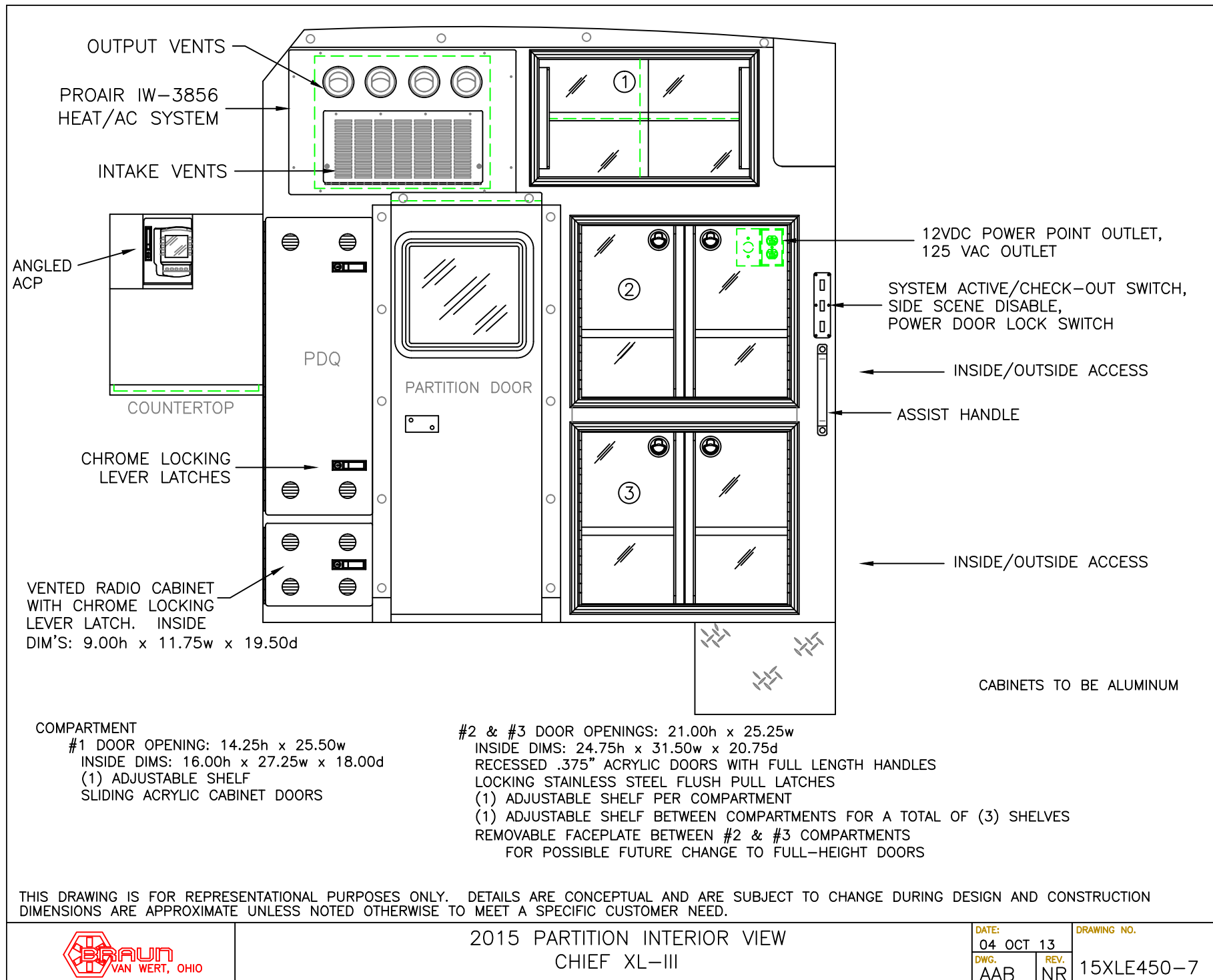


2015 CURBSIDE INTERIOR VIEW
 CHIEF XL-III

1:20

DATE:
04 OCT 13
DWG.
AAB
REV.
NR

DRAWING NO.
15XLE450-6

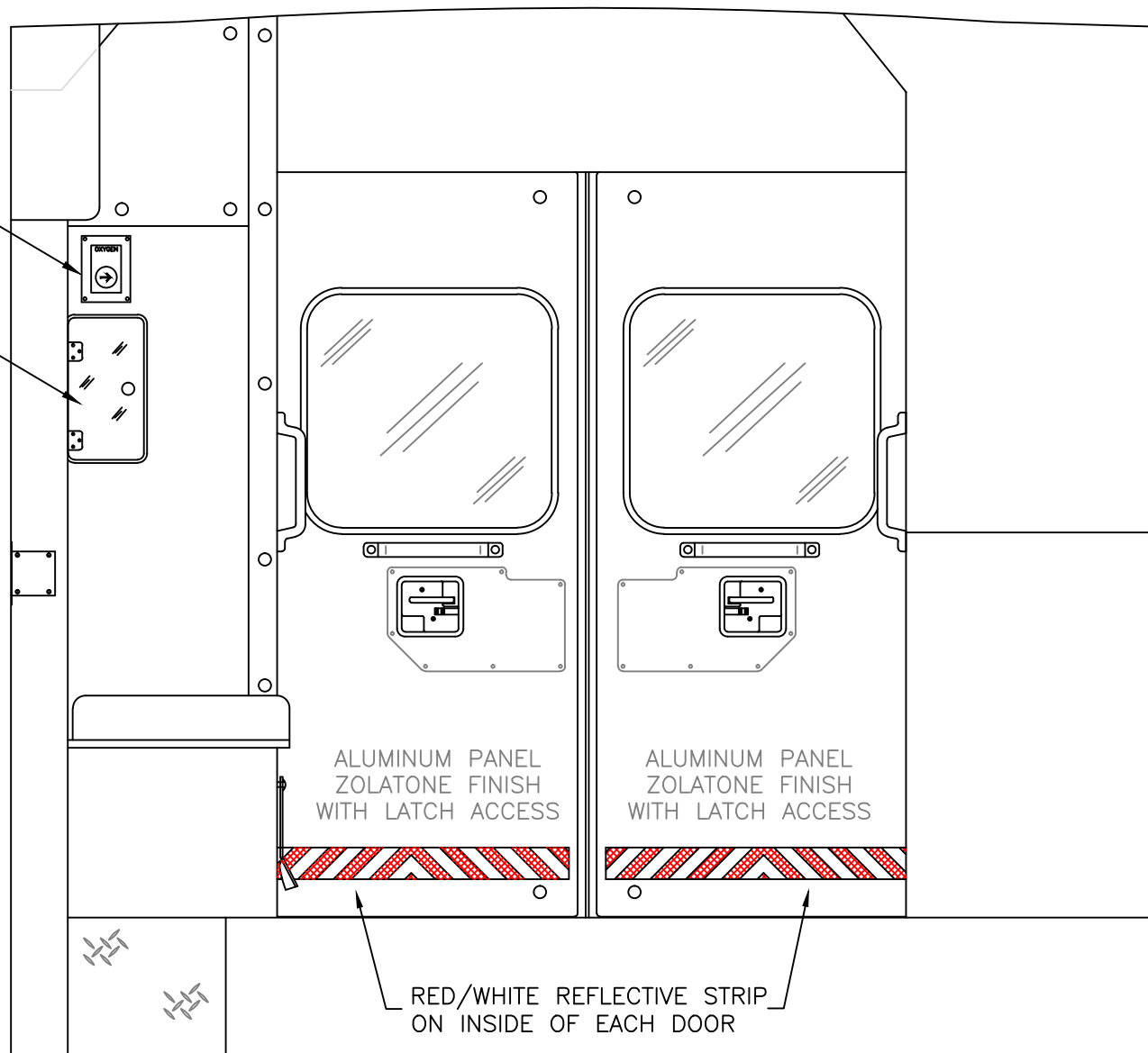


2015 PARTITION INTERIOR VIEW CHIEF XL-III

DATE: 04 OCT 13		DRAWING NO. 15XLE450-7
DWG. AAB	REV. NR	

OXYGEN BYPASS

OXYGEN ACCESS



THIS DRAWING IS FOR REPRESENTATIONAL PURPOSES ONLY. DETAILS ARE CONCEPTUAL AND ARE SUBJECT TO CHANGE DURING DESIGN AND CONSTRUCTION
DIMENSIONS ARE APPROXIMATE UNLESS NOTED OTHERWISE TO MEET A SPECIFIC CUSTOMER NEED.

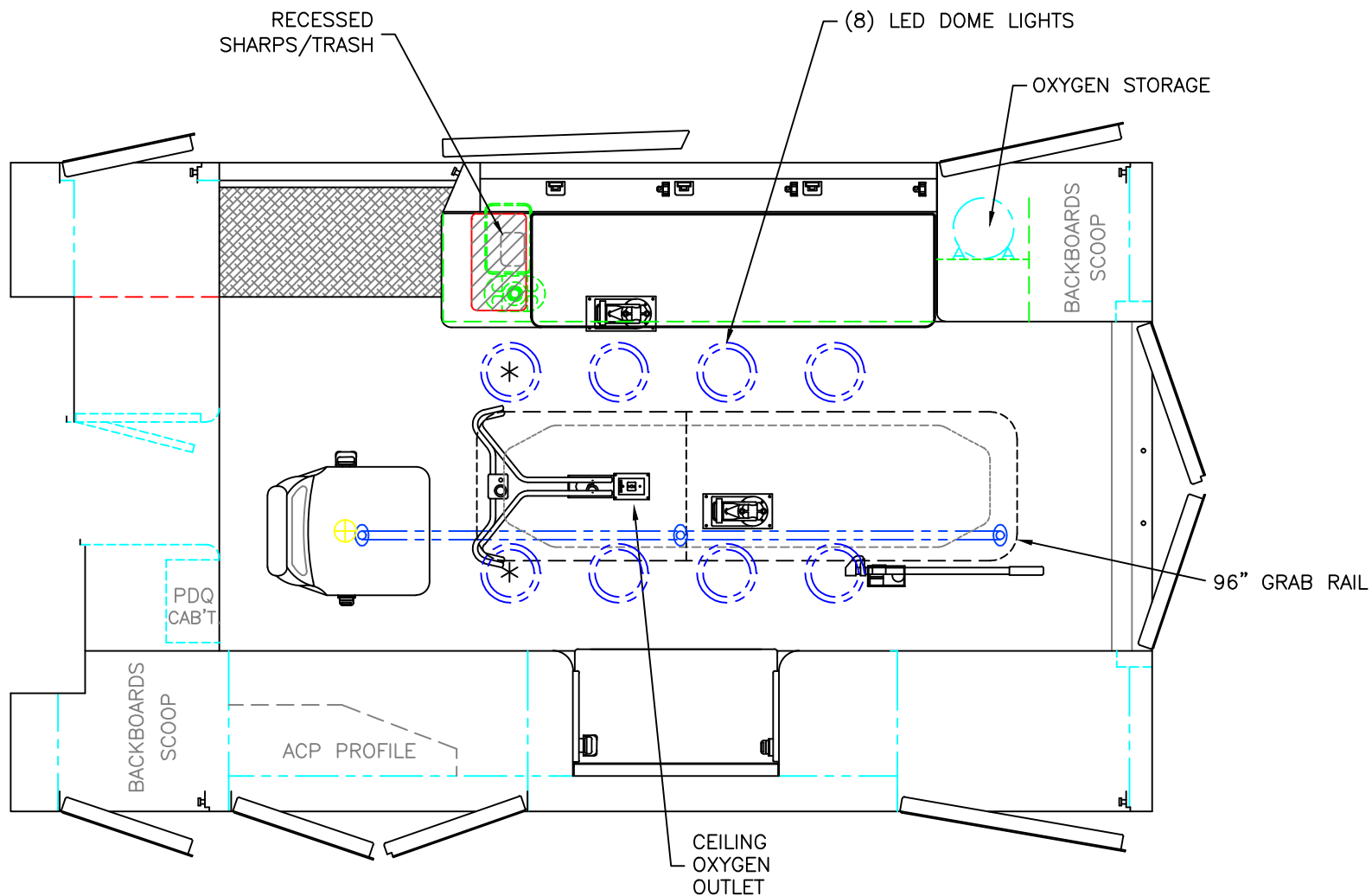


2015 REAR INTERIOR VIEW
CHIEF XL-III

1:12

DATE:
04 OCT 13
DWG. AAB NR
REV.

DRAWING NO.
15XLE450-8



 = (2) RECESSED CEILING IV HANGER LOCATIONS

* (2) ANTENNA BASES LOCATED OUTBOARD OF DOME LIGHTS WITH COAX SERVICE LOOP

STRYKER CENTER MOUNT COT HARDWARE

MODULE WIDTH = 96"
MODULE LENGTH = 169"
MODULE HEAD ROOM = 72"

THIS DRAWING IS FOR REPRESENTATIONAL PURPOSES ONLY. DETAILS ARE CONCEPTUAL AND ARE SUBJECT TO CHANGE DURING DESIGN AND CONSTRUCTION
DIMENSIONS ARE APPROXIMATE UNLESS NOTED OTHERWISE TO MEET A SPECIFIC CUSTOMER NEED.



2015 FLOOR INTERIOR VIEW
CHIEF XL-III

1:22

DATE:	04 OCT 13
DWG.	AAB
REV.	NR

DRAWING NO.
15XLE450-9