

DIMENSIONS FOR OVERALL HEIGHT AND LENGTH ARE APPROXIMATE

OVERALL HEIGHT = 110"

OVERALL WIDTH WITH RUB

RAILS & FENDERETTES = 98"

(7) WHELEN 900 SUPER LED WARNING LIGHTS
RED/RED/RED/WHITE/RED/RED/RED
WITH CLEAR LENSES

(5) TECNIQ S330 AMBER
MINI-LED MARKER LIGHTS

OEM POWER
ADJUSTABLE
MIRRORS

FLASHING HEADLIGHTS W/
DAYTIME RUNNING LIGHTS

WHELEN 700 RED SUPER
LED GRILLE LIGHTS
WITH CLEAR LENSES

HIDDEN UNLOCK SWITCH
IN GRILLE AREA

WHELEN SA315
100-WATT
SIREN SPEAKERS

OEM TOW LOOPS

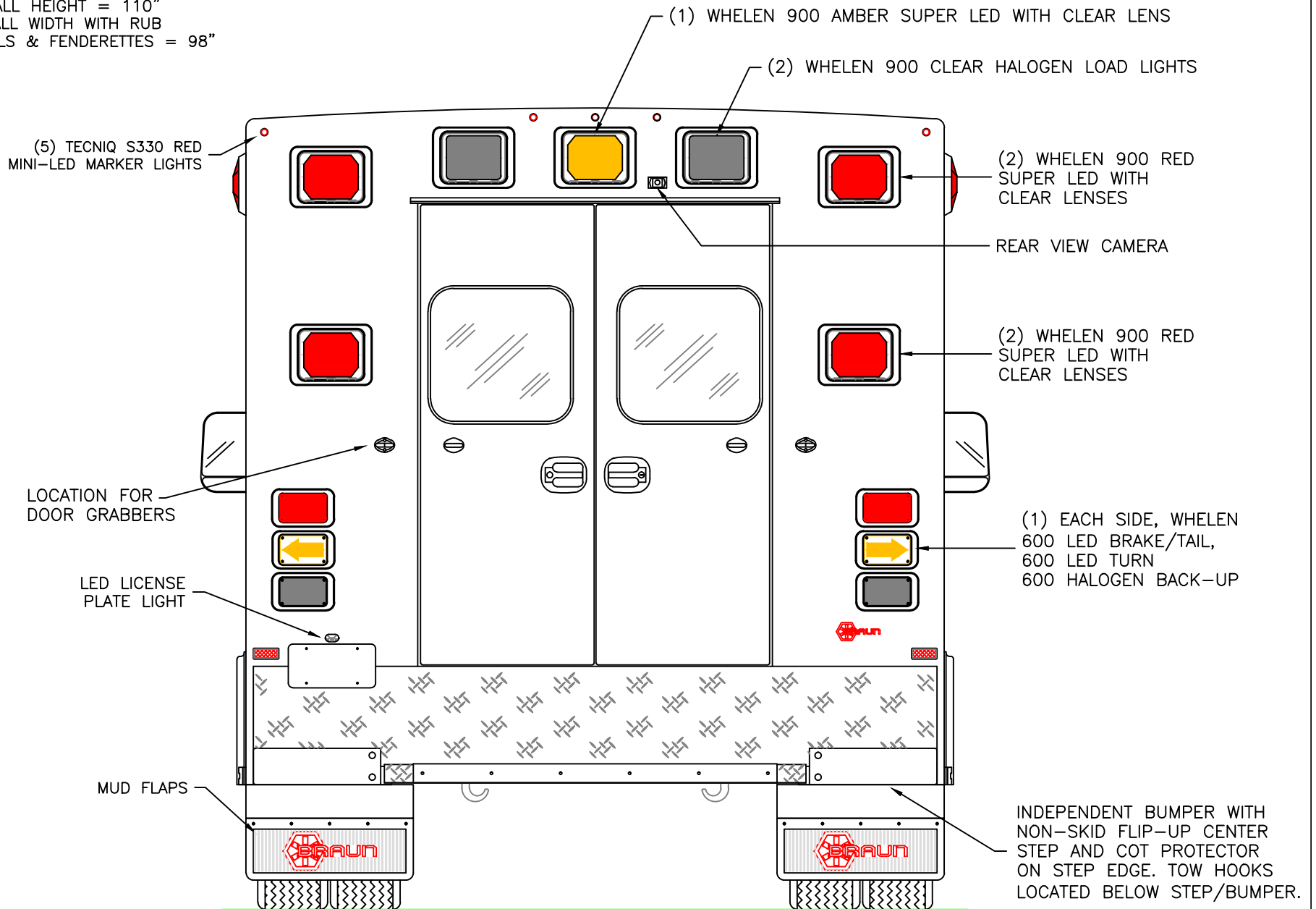
THIS DRAWING IS FOR REPRESENTATIONAL PURPOSES ONLY. DETAILS ARE CONCEPTUAL AND ARE SUBJECT TO CHANGE DURING DESIGN AND CONSTRUCTION
DIMENSIONS ARE APPROXIMATE UNLESS NOTED OTHERWISE TO MEET A SPECIFIC CUSTOMER NEED.



2015 FRONT EXTERIOR VIEW
CHIEF XL-I/RAM 4500 CHASSIS

DATE:	04 OCT 13		DRAWING NO.
DWG.	AAB	NR	
1:17			15XLR4500-1

DIMENSIONS FOR OVERALL HEIGHT AND LENGTH ARE APPROXIMATE
 OVERALL HEIGHT = 110"
 OVERALL WIDTH WITH RUB
 RAILS & FENDERETTES = 98"



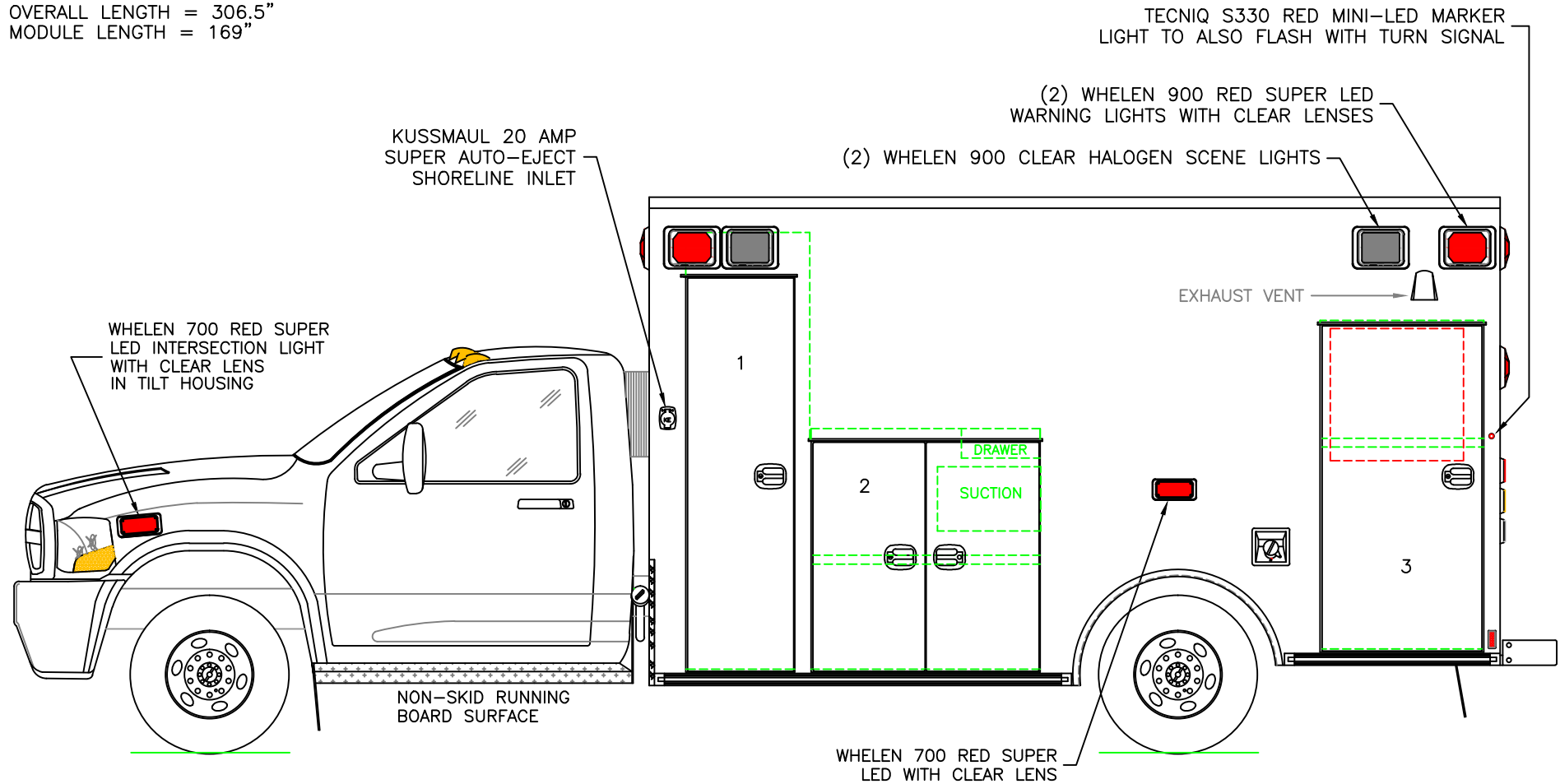
THIS DRAWING IS FOR REPRESENTATIONAL PURPOSES ONLY. DETAILS ARE CONCEPTUAL AND ARE SUBJECT TO CHANGE DURING DESIGN AND CONSTRUCTION
 DIMENSIONS ARE APPROXIMATE UNLESS NOTED OTHERWISE TO MEET A SPECIFIC CUSTOMER NEED.



2015 REAR EXTERIOR VIEW
 CHIEF XL-I/RAM 4500 CHASSIS

DATE:	04 OCT 13		DRAWING NO.
DWG.	AAB	REV.	NR
1:16			15XLR4500-2

DIMENSIONS FOR OVERALL HEIGHT AND LENGTH ARE APPROXIMATE
 OVERALL HEIGHT = 110"
 OVERALL LENGTH = 306.5"
 MODULE LENGTH = 169"



COMPARTMENT

O.S.S #1

CLEAR OPENING: 77.00h x 18.25w
 INSIDE DIM'S.: 86.75h x 24.50w x 20.75d
 BACKBOARD/SCOOP STORAGE

O.S.S #2

CLEAR OPENING: 44.25h x 39.50w
 INSIDE DIM'S.: 47.75h x 45.50w x 20.75d
 (1) ADJUSTABLE SHELF

O.S.S #3

CLEAR OPENING: 63.50h x 28.75w
 INSIDE DIM'S.: 65.25h x 32.50w x 20.75d
 INSIDE/OUTSIDE ACCESS
 (1) ADJUSTABLE SHELF

THIS DRAWING IS FOR REPRESENTATIONAL PURPOSES ONLY. DETAILS ARE CONCEPTUAL AND ARE SUBJECT TO CHANGE DURING DESIGN AND CONSTRUCTION
 DIMENSIONS ARE APPROXIMATE UNLESS NOTED OTHERWISE TO MEET A SPECIFIC CUSTOMER NEED.



2015 STREETSIDE EXTERIOR VIEW
 CHIEF XL-I/RAM 4500 CHASSIS

DATE:	04 OCT 13		DRAWING NO.
DWG.	AAB	REV.	
1:30	NR	15XLR4500-3	

DIMENSIONS FOR OVERALL HEIGHT AND LENGTH ARE APPROXIMATE

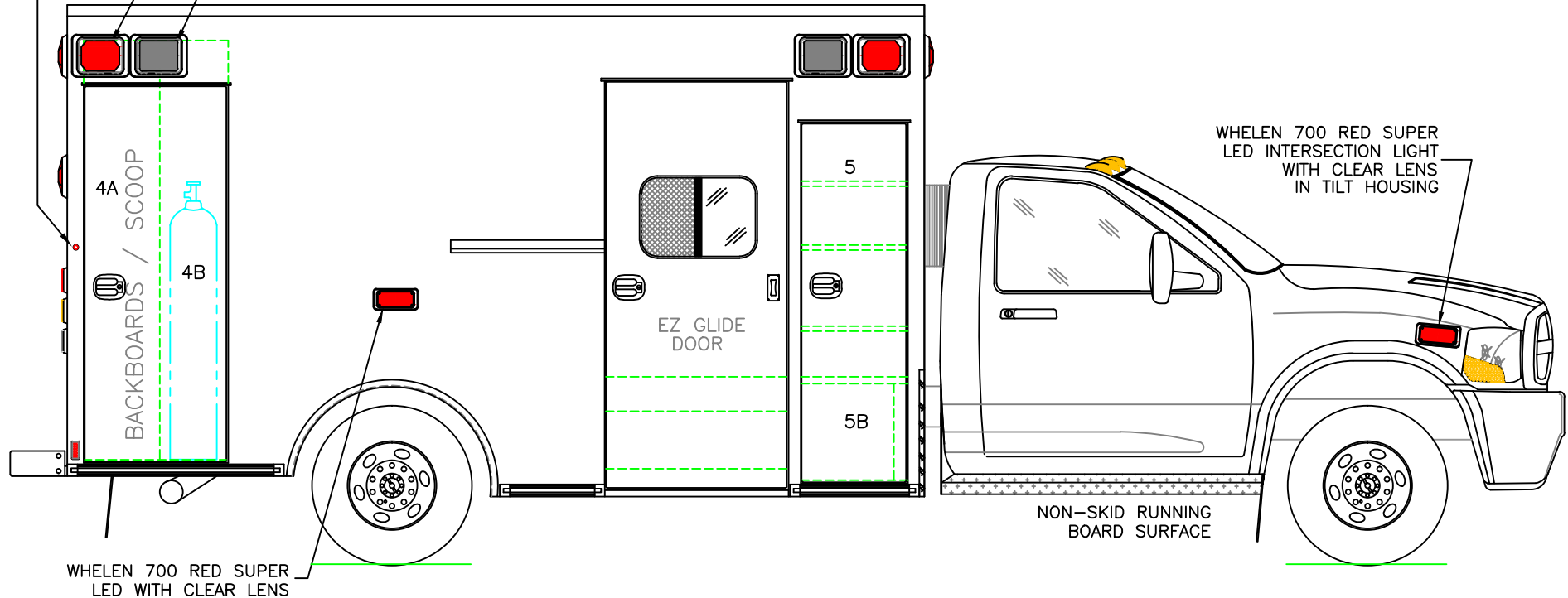
OVERALL HEIGHT = 110"
OVERALL LENGTH = 306.5"
MODULE LENGTH = 169"

TECNIQ S330 RED MINI-LED MARKER
LIGHT TO ALSO FLASH WITH TURN SIGNAL

(2) WHELEN 900 RED SUPER LED
WARNING LIGHTS WITH CLEAR LENSES

(2) WHELEN 900 CLEAR HALOGEN SCENE LIGHTS

WHELEN 700 RED SUPER
LED INTERSECTION LIGHT
WITH CLEAR LENS
IN TILT HOUSING



WHELEN 700 RED SUPER
LED WITH CLEAR LENS

COMPARTMENT
O.S.S #4

CLEAR OPENING: 73.00h x 24.75w
INSIDE DIM'S. 4A: 82.75h x 15.00w x 20.75d
BACKBOARD/SCOOP STORAGE

INSIDE DIM'S. 4B: 82.75h x 13.50w x 12.00d
MAIN OXYGEN STORAGE

O.S.S #5

CLEAR OPENING: 69.50h x 17.50w
INSIDE DIM'S. 5A: SEE PARTITION INTERIOR VIEW
INSIDE/OUTSIDE STORAGE WITH THREE (3) ADJUSTABLE SHELVES

INSIDE DIM'S. 5B: 19.00h x 20.25w x 18.00d

THIS DRAWING IS FOR REPRESENTATIONAL PURPOSES ONLY. DETAILS ARE CONCEPTUAL AND ARE SUBJECT TO CHANGE DURING DESIGN AND CONSTRUCTION
DIMENSIONS ARE APPROXIMATE UNLESS NOTED OTHERWISE TO MEET A SPECIFIC CUSTOMER NEED.

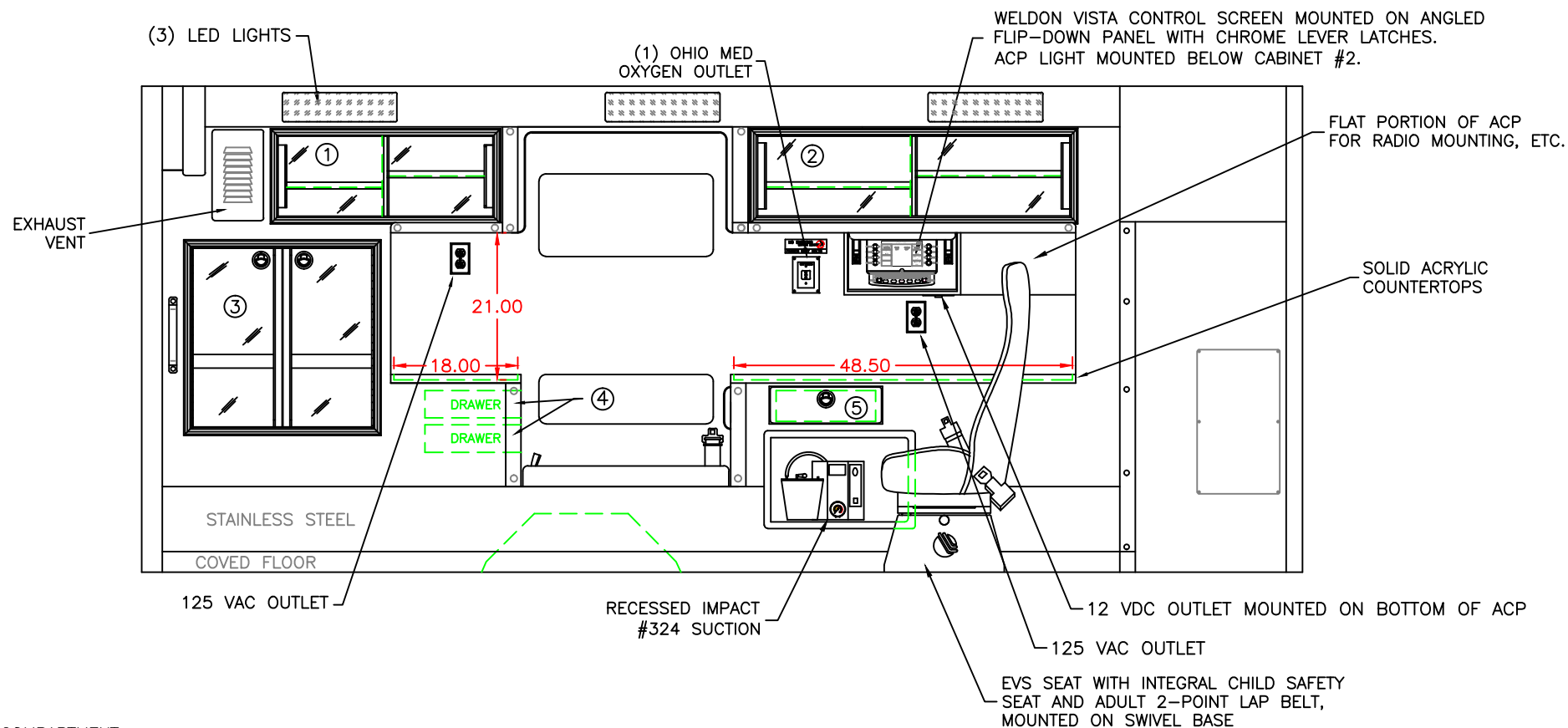


2015 CURBSIDE EXTERIOR VIEW
CHIEF XL-I/RAM 4500 CHASSIS

1:30

DATE:
04 OCT 13
DWG. AAB
REV. NR

DRAWING NO.
15XLR4500-4



COMPARTMENT

#1 DOOR OPENING: 11.50h x 31.25w
 INSIDE DIMS: 13.25h x 33.00w x 17.25d
 (1) ADJ SHELF EACH SIDE OF CENTER DIVIDER
 SLIDING ACRYLIC CABINET DOORS

#2 DOOR OPENING: 11.50h x 45.25w
 INSIDE DIMS: 13.25h x 47.00w x 17.25d
 (1) ADJ SHELF EACH SIDE OF CENTER DIVIDER
 SLIDING ACRYLIC CABINET DOORS

#3 DOOR OPENING: 26.25h x 26.50w
 INSIDE DIMS: O.S.S. #3
 RECESSED .375" ACRYLIC DOORS WITH FULL LENGTH HANDLES
 LOCKING STAINLESS STEEL FLUSH PULL LATCHES

#4 = TWO DRAWERS THAT PULL-OUT TOWARD CPR SEAT
 INSIDE DIMS: 3.50h x 9.00w x 12.00d
 LOCKING STAINLESS STEEL FLUSH PULL LATCHES

#5 PULL-OUT DRAWER WITH HINGED ACRYLIC WRITING SURFACE
 INSIDE DIMS: 4.50h x 14.50w x 13.25d
 LOCKING STAINLESS STEEL FLUSH PULL LATCH

CABINETS TO BE ALUMINUM

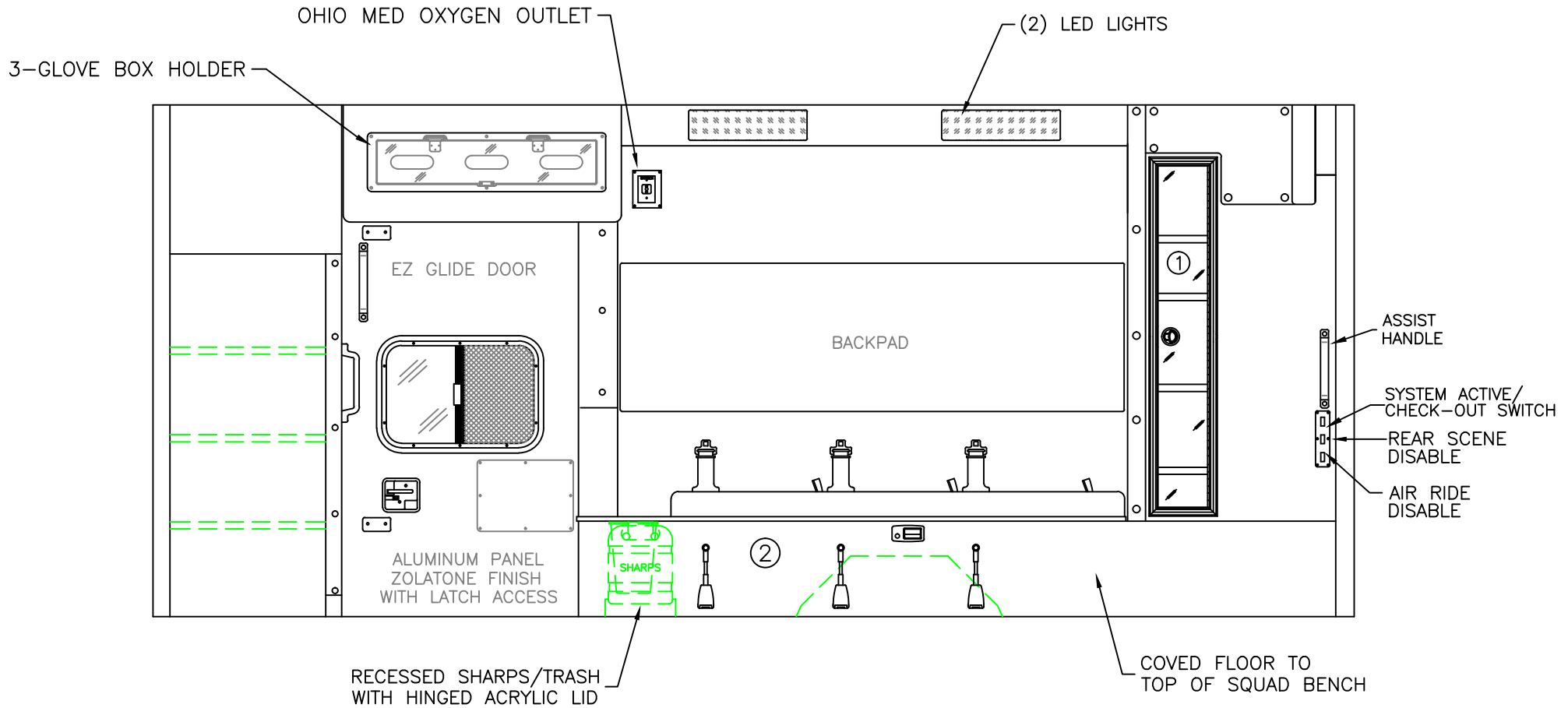
THIS DRAWING IS FOR REPRESENTATIONAL PURPOSES ONLY. DETAILS ARE CONCEPTUAL AND ARE SUBJECT TO CHANGE DURING DESIGN AND CONSTRUCTION
 DIMENSIONS ARE APPROXIMATE UNLESS NOTED OTHERWISE TO MEET A SPECIFIC CUSTOMER NEED.



2015 STREETSIDE INTERIOR VIEW
 CHIEF XL-I

DATE:	04 OCT 13	DRAWING NO.	15XLR4500-5
DWG.	AAB	REV.	NR

1:22



COMPARTMENT

- #1 DOOR OPENING: 48.00h x 7.25w
 INSIDE DIMS: 50.00h x 11.50w x 7.50d
 RECESSED .375" ACRYLIC DOOR
 (1) LOCKING STAINLESS STEEL FLUSH PULL LATCH
 (4) ADJUSTABLE SHELVES

#2 INSIDE DIM'S: 14.25h x 77.00w x 21.00d

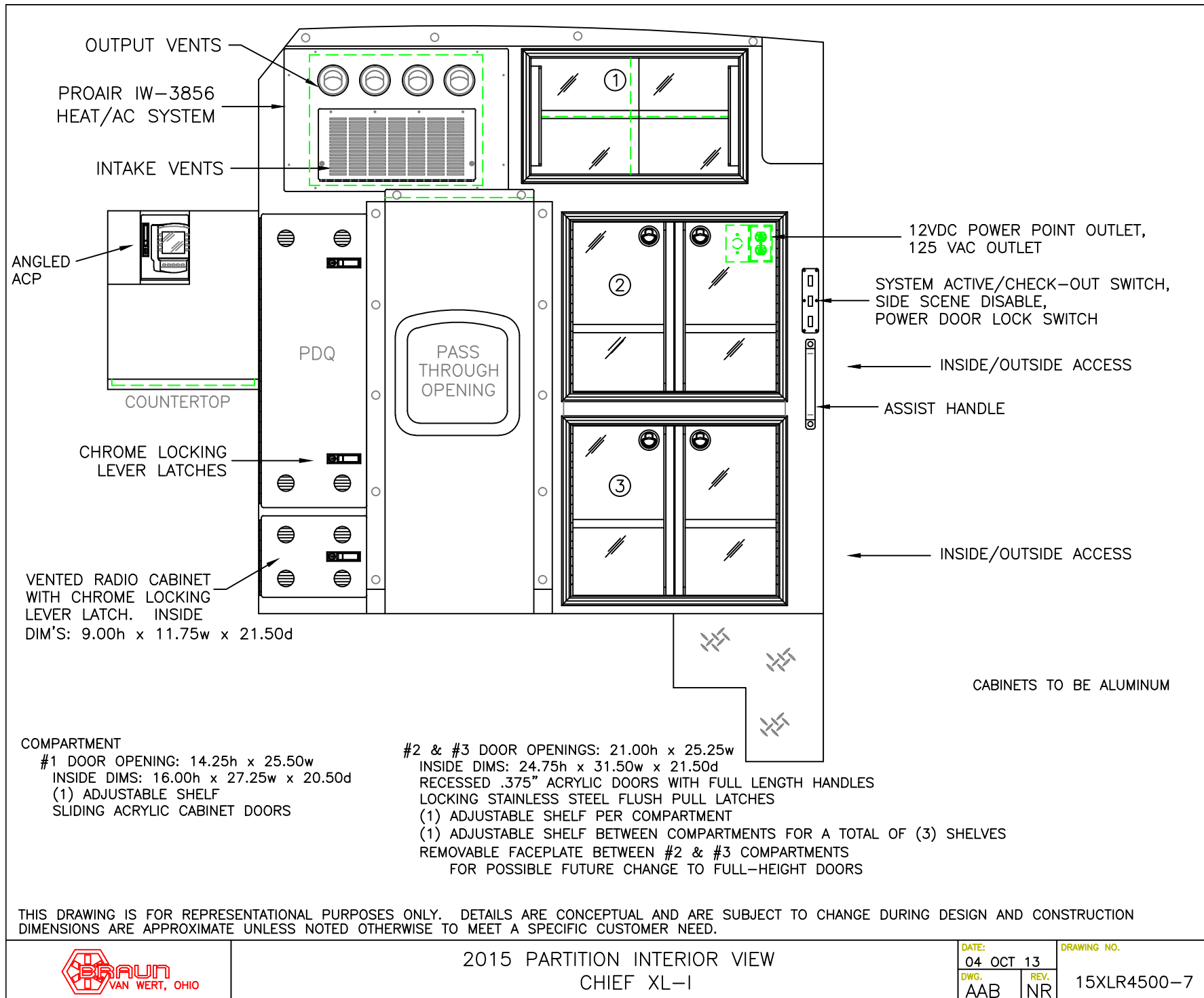
CABINETS TO BE ALUMINUM

THIS DRAWING IS FOR REPRESENTATIONAL PURPOSES ONLY. DETAILS ARE CONCEPTUAL AND ARE SUBJECT TO CHANGE DURING DESIGN AND CONSTRUCTION
 DIMENSIONS ARE APPROXIMATE UNLESS NOTED OTHERWISE TO MEET A SPECIFIC CUSTOMER NEED.



2015 CURBSIDE INTERIOR VIEW
 CHIEF XL-I

DATE:	04 OCT 13	DRAWING NO.
DWG.	AAB	REV.
1:20	NR	15XLR4500-6



OXYGEN BYPASS

OXYGEN ACCESS

ALUMINUM PANEL
ZOLATONE FINISH
WITH LATCH ACCESS

ALUMINUM PANEL
ZOLATONE FINISH
WITH LATCH ACCESS

RED/WHITE REFLECTIVE STRIP
ON INSIDE OF EACH DOOR

THIS DRAWING IS FOR REPRESENTATIONAL PURPOSES ONLY. DETAILS ARE CONCEPTUAL AND ARE SUBJECT TO CHANGE DURING DESIGN AND CONSTRUCTION
DIMENSIONS ARE APPROXIMATE UNLESS NOTED OTHERWISE TO MEET A SPECIFIC CUSTOMER NEED.

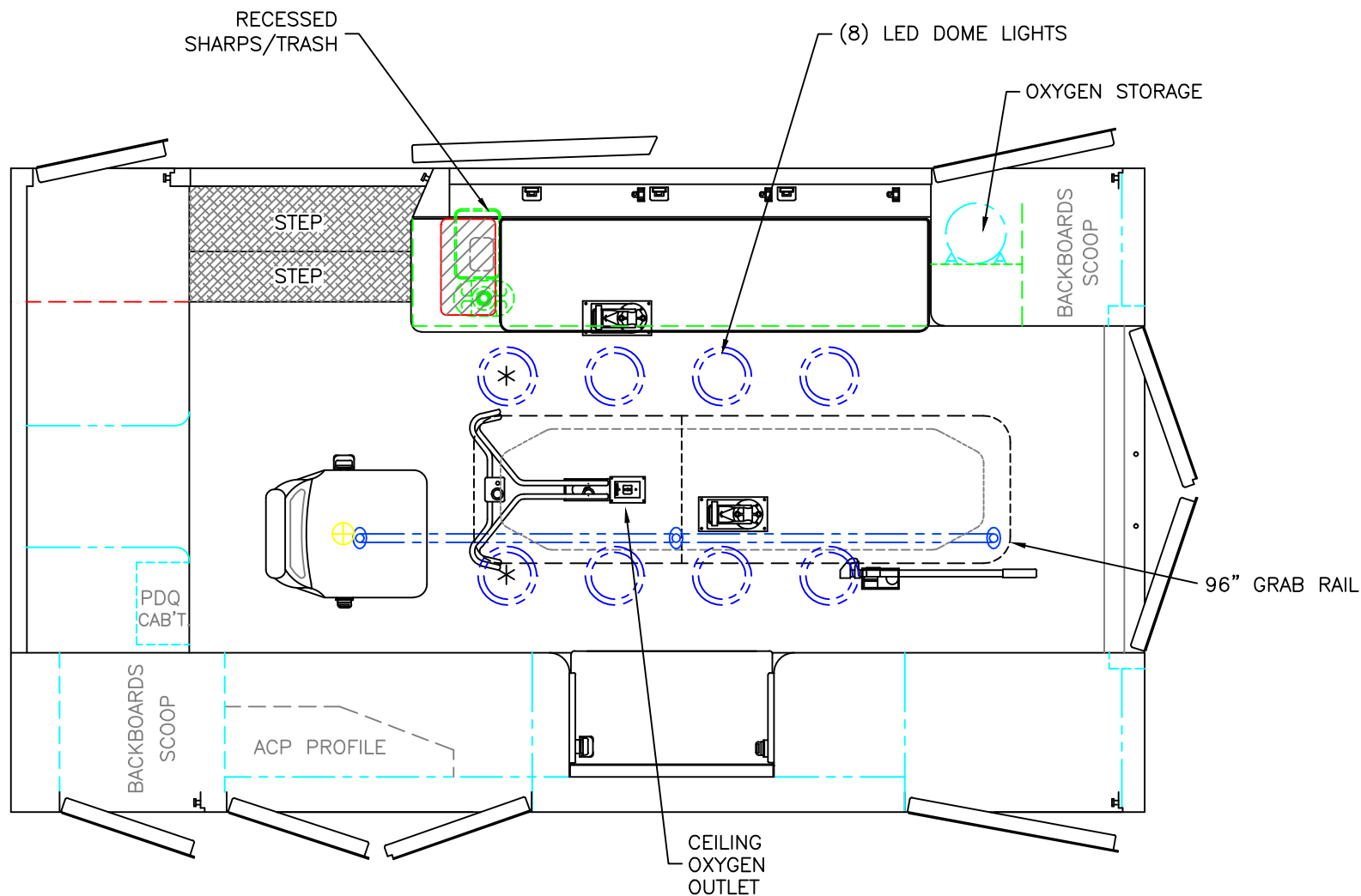


2015 REAR INTERIOR VIEW
CHIEF XL-I

1:12

DATE:	04 OCT 13
DWG.	REV.
AAB	NR

DRAWING NO.
15XLR4500-8



 = (2) RECESSED CEILING IV HANGER LOCATIONS

* (2) ANTENNA BASES LOCATED OUTBOARD OF DOME LIGHTS WITH COAX SERVICE LOOP

STRYKER CENTER MOUNT COT HARDWARE

MODULE WIDTH = 96"
MODULE LENGTH = 169"
MODULE HEAD ROOM = 72"

THIS DRAWING IS FOR REPRESENTATIONAL PURPOSES ONLY. DETAILS ARE CONCEPTUAL AND ARE SUBJECT TO CHANGE DURING DESIGN AND CONSTRUCTION
DIMENSIONS ARE APPROXIMATE UNLESS NOTED OTHERWISE TO MEET A SPECIFIC CUSTOMER NEED.



2015 FLOOR INTERIOR VIEW
CHIEF XL-I

1:22

DATE:	04 OCT 13
DWG.	REV.
AAB	NR

DRAWING NO.
15XLR4500-9